

SENDMatters

Welcome to the latest issue of SENDMatters

SENDMatters is designed to give you the latest news and updates from the Special Educational Needs and Disabilities (SEND) reforms happening across Bromley right now.



Delivering the
Bromley
LOCAL
OFFER.

IN THIS ISSUE:

- Bromley welcomes publication of the Local Area SEND Inspection report
- SEND Network Champions
- The Bromley Local Offer: An Update
- The Bromley Autism Partnership Project -
 - Did you know...? guide
 - Awesome Autism Advisors
 - Core Capabilities Frameworks
 - World Autism Awareness Week 2020
 - Bromley Well services
- SEND training for professionals
- EHC Portal Training
- Co-production project between IASS and Glebe School students
- Who's who in SEND?
- SEND Mythbuster

Bromley welcomes publication of the Local Area SEND Inspection report

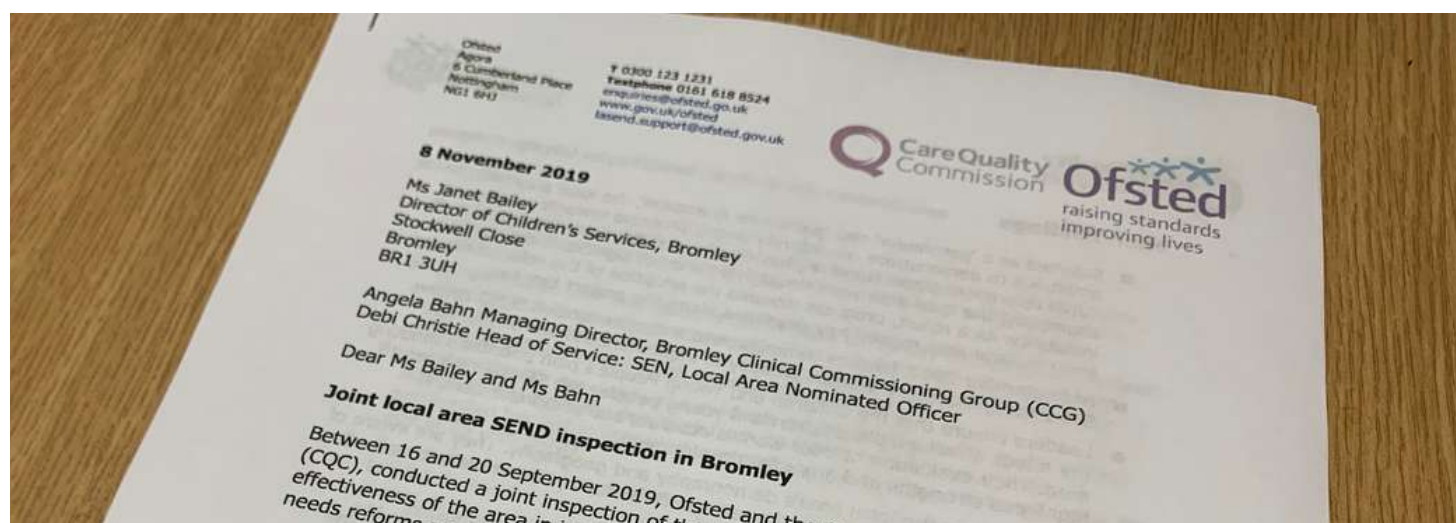
Bromley Council and Bromley NHS Clinical Commissioning Group welcome the feedback given in a report on SEND provision published by Ofsted and the Care Quality Commission (CQC) on Monday 23 December.

The joint inspection of the local area was undertaken to judge Bromley's effectiveness in implementing the disability and special educational needs reforms set out in the Children and Families Act 2014.

Inspectors spoke with children and young people with special educational needs and/or disabilities (SEND), parents and carers, providers and local authority and National Health Service (NHS) officers. They also spoke to leaders, staff and governors at Bromley schools about how they were implementing the special educational needs reforms.

The report set out in a letter, outlines the findings including areas of strength and some for further improvement. Our SEND reforms continue at pace as Bromley is ambitious for all of its children and young people and strives for excellence.

You can view the letter by visiting <https://files.ofsted.gov.uk/v1/file/50136815>.



SEND Network Champions

The SEND Network Champions met on 22 January 2020, with the common goal of wanting to make a difference to children and young people with SEND.

Presentations were provided by colleagues from across the local area, covering:

- The Statutory Assessment (EHC) Process
- Understanding Autism and the 100 day challenge
- What's on the Local offer
- Networking!

If you would like to become a SEND Network Champion to represent your team or service, please contact liz.lake@bromley.gov.uk. The commitment is attending a meeting 3 times a year and in return we will send you information that is specific to your area.

The next meeting is **Wednesday 13 May 2020 at Bromley Library from 13:15 to 15:00.**



The Bromley Local Offer: An Update



The purpose of the Local offer is to establish an area where families and young people with SEND 0-25 and professionals who work in the SEND arena can clearly see the services that are available across the borough with clear information and signposting about how to access them.

Feedback from families, young people and professionals that fed into the joint SEND inspection by Ofsted and the CQC identified two main areas of concern about the local offer and web site:

1. Services listed are not always available due to published information being out of date
2. The website was not routinely used by the families and young people that it is intended to serve

A key driver of the changes to the Local Offer is the recruitment of a Local Offer Development Officer (LODO), Paula Hollywood who joined us in September 2019.

In addition a multi-disciplinary steering group has been formed where key colleagues from the Education, Health and Social Care together with parent representatives have collaborated with the agreed purpose of driving through the changes needed as quickly as possible. The steering group has already displayed a fantastic understanding of the importance of the Local Offer and have been enthusiastic about committing their ideas and time to this important area.

Development of the site will take a phased approach:

Phase one has focused on ensuring that all the statutory requirements set out in the SEND Code of Practice have been met. This has ensured that the correct information is available on the Local Offer.

Phase two is now focusing on a redesign of the Local Offer structure to ensure information is more accessible and easier to use. Use of a common language will also feature strongly at this stage to ensure that the information we provide is right for the target audience.

Phase three will allow testing and feedback from families, young people and professionals to ensure the Local Offer meets their expectations. This will be followed by a soft launch of the newly structured site in the Spring 2020. An ongoing cycle of consultation, review and improvement will follow to reflect the changing needs of our community.

Communication

We have updated our posters and leaflets to reflect the changes we have made. These have been designed and distributed across the borough to encourage the feedback, ideas and input from anyone interested in helping to develop this valuable resource.

We encourage everyone to continue to offer their ideas and input using either the online feedback form found at www.bromley.gov.uk/localoffer or via email to localoffer@bromley.gov.uk.

THE BROMLEY AUTISM PARTNERSHIP PROJECT

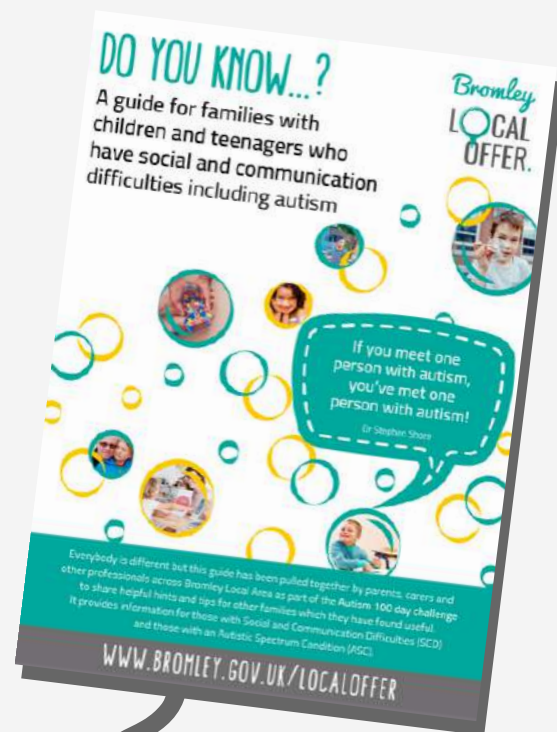
DO YOU KNOW...? GUIDE

This A5 guide has been designed by parents, carers and other professionals across Bromley Local Area as part of the Bromley 100 day challenge to share helpful hints and tips for other families in Bromley which they have found useful.

It includes details on:

- Where to go for information, advice and guidance
- Training for parents
- Support available for parents and families
- Where to get information locally and nationally
- Local disability schemes
- And handy tips for making life easier

The guide will be updated each quarter by an editorial group run by parents. If you have any information you would like to be considered for the next edition, please email liz.lake@bromley.gov.uk by the end of March.



Download from
[www.bromley.gov.uk/
SCDAutismGuide](http://www.bromley.gov.uk/SCDAutismGuide)



THE BROMLEY AUTISM PARTNERSHIP PROJECT

AWESOME AUTISM ADVISORS

CASPA are working together with the Council and the Clinical Commissioning Group to help with the planning of the services at the new Autism Centre of Excellence in Bromley.

As part of this project, CASPA have formed a research group of young people living with Autism, who are researching and gathering information from others living with, or caring for family members who have Autism in the Bromley community.

They would like to find out more about experiences of being a parent or carer of a child or young person who have Autism, being a child or young person with autism living in Bromley and those who work to support them.

The suggestions made in this survey will help to inform Bromley services and the multi-agency centre which will be at the heart of our new free school.

Please complete and share the surveys as widely as you can:

- Survey for staff: www.surveymonkey.co.uk/r/C528BYD
- Survey for parents and carers: www.surveymonkey.co.uk/r/JXSYZVN
- Survey for young people and adults: www.surveymonkey.co.uk/r/JGWXDYS



THE BROMLEY AUTISM PARTNERSHIP PROJECT

CORE CAPABILITIES FRAMEWORKS

The *Core Capabilities Framework for Supporting People with Autism* and a revised *Core Capabilities Framework for Supporting People with a Learning Disability* set out the skills and knowledge that health and social care workers need to deliver high-quality care and support for people with a learning disability and autistic people.

They can be used to support the development and planning of the workforce, and to inform the design and delivery of education and training programmes. The Department of Health and Social Care has referenced the frameworks as underpinning the mandatory training they have committed to.

View the Core Capabilities Framework for
Supporting people with autism:

Visit

<http://bit.ly/CCF-ASD>

View the Core Capabilities Framework for
Supporting people with a learning disability:

Visit

<http://bit.ly/CCF-LD>

World Autism Awareness Week 2020

World Autism Awareness Week is back from 30 March to 5 April!

What are you doing to mark this week? Activities will be taking place across the borough, including in The Glades.

For inspiration, visit the National Autism Society website:

www.autism.org.uk/get-involved/world-autism-awareness-week.aspx

Support for People with Autism



Bromley Well supports people with Autism aged 16+

- Social and leisure activities
- Health matters
- Managing your money, grants and benefits
- Housing
- Support with transition into adulthood
- Managing communication, letters, forms and applications
- Support with employment
- Life skills training
- Signposting to further services

We offer monthly workshops and peer support activities. Join us on the last Tuesday of every month from 12.30pm - 2.30pm at:

The Meeting Room, Community House,
South Street, Bromley BR1 1RH

For further information please contact Bromley Well
Call 0300 330 9039 or email spa@bromleywell.org.uk
www.bromleywell.org.uk



@BromleyWellService



@BromleyWell

Delivered by:



Bromley Third Sector Enterprise

Funded by:



Bromley

Clinical Commissioning Group

Autism Workshops

We offer monthly workshops and peer support, in partnership with CASPA, for people aged 16 and over with Autism and social and communication difficulties.

The workshops focus on supporting participants to explore practical solutions to a range of topics in a relaxed and non-judgemental environment.



Topics covered include:

- Managing money and personal administration
- Welfare benefits
- Employment and training
- Physical and emotional health
- Relationships and more

When: Workshops run on the last Tuesday of every month from **12.30-2.30pm**

Where: The Meeting Room, Community House, South Street, Bromley, BR1 1RH

Refreshments included

Workshop dates:

25th February, 31st March, 28th April, 26th May, 30th June, 28th July, 25th August, 29th September, 27th October and 24th November

For further information, please contact the Single Point of Access on 0300 330 9039 or email spa@bromleywell.org.uk

Delivered by:



Funded by:



Clinical Commissioning Group

SEND training for professionals

Our suite of free training courses are specifically aimed at those working within health, social care and education and those new into their role.

During April, we have the following courses available:

Working together to develop good outcomes and provision in an EHC Plan

- On Thursday 2 April 2020
- From 3pm
- In the Committee Rooms at Bromley Civic Centre

Introduction to Special Educational Needs and Disabilities (SEND) Code of Practice

- On Tuesday 21 April 2020
- From 3pm
- In the Committee Rooms at Bromley Civic Centre

To book online, and to view other available dates and courses, visit <http://bromleylocaloffer.eventbrite.com>.



Education, Health and Care (EHC) Portal Training 2020



Delivering the
Bromley
LOCAL
OFFER.

The Education, Health and Care (EHC) online portal is now fully live with **ALL** new requests for needs assessments.

The training sessions are available to you and provides information and demonstration of the system from your point of view.

PRE-SCHOOL SENCOS

- Tuesday 28 January from 6pm
- Wednesday 5 February from 6pm
- Monday 17 February from 6pm
- Tuesday 24 March from 4pm

PRIMARY AND SECONDARY SCHOOL SENCOS

- Mon 27 January from 6pm
- Thursday 30 January from 6pm
- Friday 31 January from 3pm
- Wednesday 11 March from 6pm

PARENT AND CARERS INFORMATION AND DEMONSTRATION SESSIONS

- Tuesday 21 January from 10am
- Tuesday 4 February from 10am
- Wednesday 12 February from 10 am
- Wednesday 25 March from 10am

LOCATION

All of the sessions will take place at:

The Small Hall, 4th Floor
Bromley Central Library
High Street
Bromley BR1 1EX

The training sessions usually run from 30 to 60 minutes depending on the group size; however, the room is booked for two hours should we need more time.

HOW TO BOOK

To reserve your space, please email sara.groenli@bromley.gov.uk specifying the session you wish to attend.

Co-production project between IASS and Glebe School students

IASS Bromley has worked with Glebe School students over the last four years to co-produce resources for IASS.

This year, the students focused on designing an IASS logo.

IASS Bromley is currently creating a stand-alone website and are aware of how important it is to develop an online identity when doing this. One key aspect to this, particularly for engaging with young people, is to have an accessible and aesthetic website. IASS wanted to include a logo that has been designed by a young person in Bromley.

The winner of this competition was Dean Brown. His logo design was unique and included aspects that were felt to be a good reflection of what IASS is and what it is trying to achieve. Some colleagues saw a winding road that led from an uncertain face to a happy face, whilst others saw a curved 'i' which reflects the IASS service initial.

The winning logo –
held by Mr Parmar as Dean preferred not to have his photo taken.



Who's who in SEND?

Matt Barton

Children and Young People's Support Worker

Location:

Central Library, High Street, Bromley BR1 1EX

Email:

matthew.barton@bromley.gov.uk



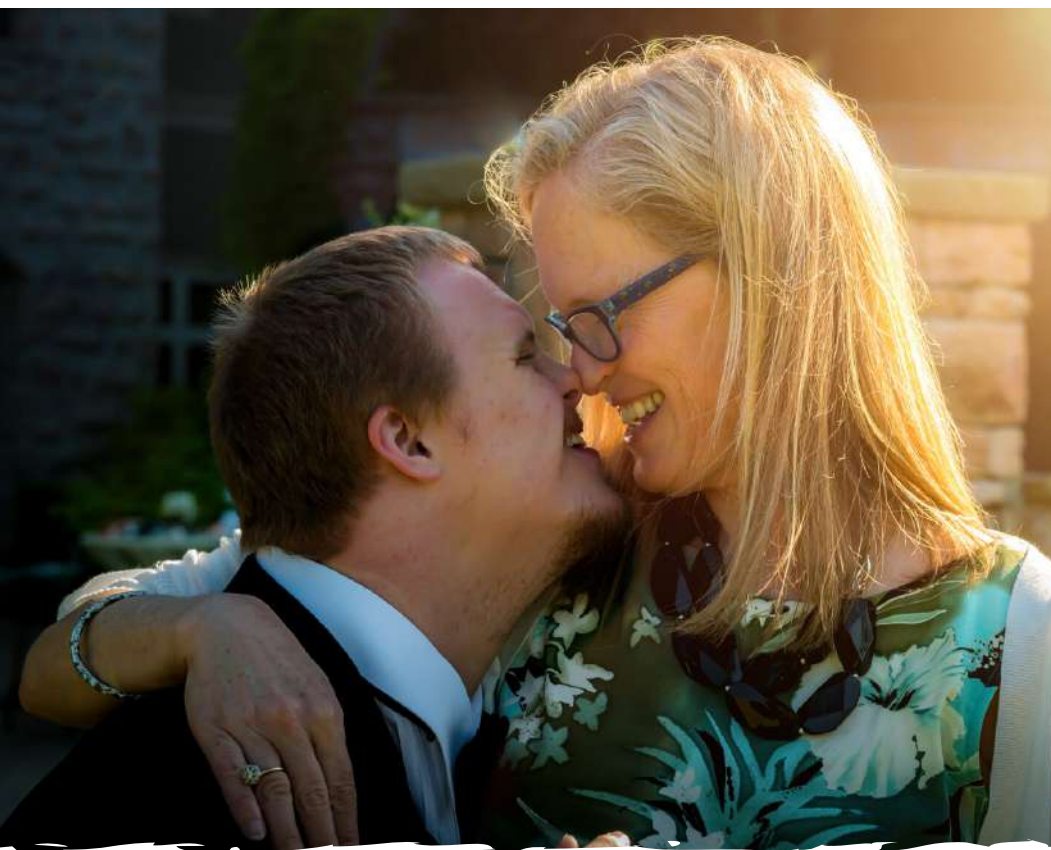
I have worked within the Information, Advice & Support Service now for the last 3 years. As the Children & Young Person's Support Officer, my role in IASS is to ensure the 'voice of the child' is being heard.

I have direct contact with children and young people with SEND, providing support via text, phone, and email, as well as attending meetings with them or on their behalf.

Since the CYP Support role was created, we have seen an increase in the amount of young people who directly refer themselves to IASS. We work closely with schools such as Bromley Trust Academy Hayes where I attend termly review days to speak with the students, and Glebe School where I have lead assemblies and co-produced projects with students.

Our aim is to empower children, young people and their families, giving impartial advice and options, and to keep a consistent focus on the views and wishes of the child. By doing this, we support young people to feel encouraged to take part in – and drive – the meaningful conversations about their education, health and care needs as well as their future aspirations and life goals.

I work in close partnership with the Children and Young People SEND lead to ensure the voice of the child and young person informs the strategic planning and commissioning of services across the borough.



Bromley LOCAL OFFER.

A source of information and advice on local services and support available for families including children and young people aged 0 - 25 years with special educational needs or disabilities



www.bromley.gov.uk/localoffer

or email localoffer@bromley.gov.uk



Myth

The best way to support a child or young person to improve their communication skills is through one to one sessions with a Speech and Language Therapist.

Fact

There are a number of different ways that a child/young person can be supported to make progress with their communication skills. It is most beneficial to work with the people they communicate with on a daily basis e.g. parents, class mates and education staff. It is also useful to provide the support in situations that they will need to use their communication skills most frequently e.g. in their education setting, small group situations or out in a community setting such as a café.



Produced by:

Children's Services
LONDON BOROUGH OF BROMLEY
Civic Centre, Stockwell Close,
Bromley BR1 3UH

WWW.BROMLEY.GOV.UK/LOCALOFFER

