

Annual Parking Report - 1st April 2016 to 31st March 2017

Appendix 1

Parking in Bromley; Facilities, Management and Enforcement



Appendix 1

Section 1 – Background information about the London Borough of Bromley

Bromley is situated in South East London - flanked by the London Boroughs of Croydon, Lewisham, Southwark, Lambeth, Greenwich and Bexley. It also has borders with Tandridge (Surrey) and Sevenoaks (Kent). Geographically it is the largest of the London Boroughs; its major centres of population are Bromley, Orpington, Beckenham, Penge, West Wickham, Chislehurst, Petts Wood and Biggin Hill. It is mainly of an urban character to the north and approximately half its area (mostly the south-east) is rural and green belt.

According to the 2011 Census of England and Wales, the Borough has a population of almost 310,000. Its area is around 58 square miles; comprising of approximately 3,500 streets and 550 miles of highway (approximately 100 miles of which is yellow lined).

The main Controlled Parking Zone is in Bromley Town Centre spanning an area of 1.78 square miles and consisting of an inner and an outer zone. There are 257 streets that have an area within this zone. There are Restricted Parking Zones (RPZs) in Orpington High Street and Bromley North Village. More information about Controlled Parking Zones and Restricted Parking Zones is available in section 7 of this appendix.

Two arterial designated Red Routes run through the Borough (the A21 and A232) and a short section of the A20 clips its north-east boundary. There are good transport links to Central London, which is approximately 9 miles from Bromley town centre.

The main shopping areas are Bromley, Orpington and Beckenham town centres. An average of 60,000 shoppers (approximately) visit Bromley every day. The daily averages for Orpington (31,000) and Beckenham (26,000) are based on Saturday counts. Other significant shopping areas in the Borough are Petts Wood, Penge and West Wickham.

Section 2 - Parking provision in the London Borough of Bromley

We aim to meet the needs of different motorists through our provision of parking facilities. There are currently approximately 250 pay and display machines located in various roads and car parks throughout the Borough. These have been provided by the company Parkeon and are solar powered, meaning they do not need an electrical source to operate. Payment to these machines is pre-paid and can only be made by coins; 5p, 10p, 20p, 50p, £1 and £2.

'Pay on foot' is the term applied to the method of paying for parking in our two multi-storey car parks (MSCPs) in Bromley Town Centre; namely the Civic Centre and The Hill. The machines have been provided by the company Parkare Limited. Payment to these machines can be made by coins; 5p, 10p, 20p, 50p, £1 and £2 or by £5, £10 and £20 currency notes and payment is made on exit. Payment may now also be made by debit/credit card in the Civic Centre

and The Hill, where season tickets are also available. The purchase of a value card is a way of getting a percentage of extra free parking time; 15% or 20%, depending on the amount paid. These value cards can be used in both the above mentioned MSCPs.

'Cashless parking' or 'pay by phone' are the terms applied to paying for parking using a mobile phone. This facility is accessible in all Council owned pay and display parking areas, including on-street pay and display bays and car parks (with the exception of the MSCPs in Bromley Town Centre).

Section 3 – Parking facilities

The London Borough of Bromley manages on-street and off-street parking facilities as set out below (figures shown are approximate). Where payment is required to park, the management arrangements are as follows:

Charging model	Coins	Notes	Debit/credit card module	Mobile phone
Pay and display machines	✓	X	X	✓
Pay on foot systems	✓	✓	✓	X
Mobile phone only bays	X	X	X	✓

Parking spaces: on-street (kerbside):

- 2,500 pay and display/mobile phone parking bays.
- 800 free bays.

Parking spaces: off-street (car parks):

- 4,000 surface and multi-storey parking spaces;
- 1,750 multi-storey parking spaces managed by pay on foot systems.

Car parks:

36 car parks comprising of the following:

Car park type	Operation	Total	Cars	Coaches	HGVs	Electric vehicle charging bays	Motorcycle bays
MSCP	Pay and display	1	✓	X	X	X	✓
MSCP	Pay on foot	2	✓	X	X	✓	✓
Surface	Pay and display	25	✓	X	✓*	✓*	✓
Surface	Free	5	✓	✓*	✓*	✓*	✓
Surface	Permit holders/free	1	✓	X	X	X	X
Surface	Disabled only	1	✓	X	X	X	✓
Surface	Pay and display/disabled	1	✓	✓	X	X	X

* **Coaches** can park free in Cotmandene Crescent surface car park in St Paul's Cray.

HGVs can park free in Cotmandene Crescent surface car park in St Paul's Cray and can pay to park in St Georges Road surface car park in Beckenham.

Electric vehicle charging bays are available in eight car parks and two on-street locations as shown below.

Car parks:

- Burnt Ash Lane surface car park in Bromley,
- Civic Centre multi-storey car park in Bromley,
- Lennard Road surface car park in Beckenham,
- Penge East surface car park in Penge,
- Spa Leisure Centre surface car park in Beckenham,
- St Georges Road surface car park in Beckenham,
- Station Approach surface car park in Hayes,
- The Hill multi-storey car park in Bromley.

On-street locations:

- South Hill Road in Bromley,
- The Meadway in Chelsfield.

Further information about Bromley's car parks, including numbers of parking spaces, disabled bays and usage during the period of this report is provided in the table in section 5b.

Section 4 - Car park management

Our parking contractor, Indigo Park Services UK Limited (formerly Vinci Park Services UK Limited); manages our surface and multi-storey car parks. Their responsibilities include:

- staffing;
- security;
- repairs to minor potholes;
- grass cutting;
- cleaning and graffiti removal;
- gritting and snow clearance;
- collection of and accounting for fees;
- insurance of car park contents (either owned by the contractor or licensed to them by the council);
- non-structural maintenance; and
- maintenance of:
 - pay and display machines;
 - pay on foot equipment,
 - height, width and safety barriers;
 - fencing and railings;
 - signage;
 - tree and associated horticulture;
 - car park barriers;
 - access control and fee collection systems.

The council is responsible for:

- lighting;
- major re-surfacing works (as and when required);
- structural maintenance (including external decorating);
- buildings insurance of multi-storey car parks and associated lifts;
- closed circuit television systems; and
- any integral public toilet facilities.

Section 5a – The table over the following pages gives the number of on-street spaces where payment is required to park (excluding bays for permit holders only) in each road within the Bromley Borough.

On-street Parking Location	Area	Parking spaces	Disabled Bays
Anerley Hill	Anerley	19	0
Ledrington Road		35	1
Anerley Total		54	1
Albemarle Road	Beckenham	17	0
Clock House Road		6	4
Fairfield Road		6	0
High Street		38	8
Kelsey Park Road		4	1
Rectory Road		21	0
Shaftesbury Road		5	0
St Georges Road		27	0
Stanmore Terrace		8	0
Upper Elmers End Road		38	10
Beckenham Total		170	23
Aldermary Road	Bromley	11	1
Aylesbury Road		10	0
Babbacombe Road		20	3
Blyth Road		13	0
Burnt Ash Lane		22	5
Chatterton Road		56	3
Church Road		6	3
Churchill Way		4	0
College Road		7	0
Cromwell Avenue		38	0
Cromwell Close		16	0
East Street		15	2
Elmfield Park		18	0
Elmfield Road		35	3
Ethelbert Road		35	2
Florence Road		19	1
Glebe Road		34	1
Hammelton Road		35	0
Harwood Avenue		26	0
Hayes Road		7	0
High Street		15	2
North Street		16	0
Palace Grove		36	0
Palace View		14	0
Park Road		17	0
Pinewood Road		17	0

On-street Parking Location	Area	Parking spaces	Disabled Bays
Queens Road	Bromley	6	0
Rafford Way		54	0
Ravensbourne Road		40	1
Ringers Road		38	0
Sandford Road		41	0
Sherman Road		21	0
South Street		7	0
St Blaise Avenue		16	0
Station Road		22	0
Streamside Close		7	0
The Chase		5	0
Walpole Road		9	0
West Street		6	0
Bromley Total			814
Gosshill Road	Chislehurst	49	0
High Street		44	3
Royal Parade		31	0
Chislehurst Total		124	3
Bethersden Close	Copers Cope	21	1
Brackley Road		35	1
Copers Cope Road		180	0
Ingleside Close		15	0
Lawn Road		26	0
Nettlestead Close		31	0
Park Road		37	0
Parkwood		9	0
Sellindge Close		18	0
Silverwood Close		5	0
Copers Cope Total		377	2
Beckenham Road	Clock House	6	0
Blandford Road		5	0
Cedars Road		35	0
Elm Road		10	0
Queens Road		20	0
Sidney Road		7	0
Thayers Farm Road		4	0
Clock House Total		87	0
Upper Elmers End Road	Eden Park	33	2
Eden Park Total		33	2

On-street Parking Location	Area	Parking spaces	Disabled Bays
High Street	Green Street Green	12	3
Brittenden Parade		14	0
Green Street Green Total		26	3
Station Approach	Hayes	41	2
Hayes Total		41	2
Crofton Road	Locksbottom	32	1
Princess Parade		27	1
Locksbottom Total		59	2
Augustus Lane	Orpington	3	0
Aynscombe Angle		35	0
Bark Hart Road		9	2
Berwick Way		16	0
Bruce Grove		9	3
Chislehurst Road		2	1
Crofton Road		3	0
Gravel Pit Way		16	1
High Street		39	4
Hillcrest Road		11	0
Hillview Road		12	0
Lych Gate Road		49	4
Mayfield Avenue (Sth)		14	0
Newstead Avenue		5	0
Oakhill Road		6	0
Orchard Grove		22	2
Spur Road		33	0
The Approach		13	0
The Avenue		25	0
The Drive		9	0
Tower Road	8	0	
Vinson Close	28	0	
White Hart Road	7	3	
York Rise	16	0	
Orpington Total		390	20
High Street	Penge	14	6
Kent House Station Approach		27	0
Maple Road		26	2
Penge Total		67	8
Fairway	Petts Wood	17	0
Nightingale Road		12	0
Petts Wood Road		32	1
Petts Wood Square		40	0
Queensway		23	4

On-street Parking Location	Area	Parking spaces	Disabled Bays
Woodhurst Avenue	Petts Wood	11	0
Woodland Way		7	0
Petts Wood Total		142	5
Martins Road	Shortlands	3	0
Ravensbourne Avenue		49	0
Station Road		21	0
Shortlands Total		73	0
OVERALL TOTAL		2,457	98

Section 5b – The table below gives details of Bromley’s off-street parking facilities and shows the car parks that have been awarded Park Mark® status. Motorcycle parking is available in all of these car parks.

Off-street car park	Area	Number of users for the period	Total parking spaces	Disabled bays	Electric vehicle charging points	Park Mark®	
Dunbar Avenue	Beckenham	10,081	35	2		✓	
Fairfield Road		188,403	98	5		✓	
Lennard Road		18,166	111	5	2	✓	
St Georges Road		92,486	138	2	2	✓	
The Spa		191,038	154	16	2	✓	
Village Way Multi Storey		229,167	278	5		✓	
Lebanon Gardens	Biggin Hill	18,457	28	2		✓	
Burnt Ash Lane	Bromley	*	101	2		✓	
Churchill Way Coach Park		419	2 (coaches)	4			
Civic Centre Multi Storey		471,909	710	19	2	✓	
Crown Lane		*	24	1		✓	
Mitre Close		46,689	25	0		✓	
Palace Grove		6,866	97	2		✓	
South Street		10,295	68	1		✓	
St Blaise		1,096	120	3			
Station Road		17,796	83	2		✓	
The Hill Multi Storey		330,292	758	6	2	✓	
Sundridge Park Village		*	77	2		✓	
Wharton Road		*	16	0		✓	
Chelsfield		Chelsfield	12,910	70	2		✓
High Street		Chislehurst	100,869	140	2		✓
Hornbrook House	50,397		65	2		✓	
Red Hill	64,358		34	2		✓	
Coney Hall	Coney Hall	8,309	25	2		✓	
Station Approach	Hayes	111,822	127	3		✓	
Homefield Rise	Orpington	*	0	15		✓	
Bromley College (Orp campus)		12,330	83	0		✓	
Priory Gardens		6,151	13	1			
Penge East	Penge	11,721	56	3	2	✓	
Memorial Hall	Petts Wood	19,507	50	2		✓	
Queensway		48,125	48	2		✓	
Cotmandene Crescent	St Paul’s Cray	*	62	2		✓	
High Street	West Wickham	121,158	119	2		✓	
Ravenswood Avenue		220,027	153	4		✓	
Station Road		100,035	67	2		✓	
West Wickham Leisure Centre		76,489	64	2		✓	
Totals		2,597,368	**4,099	**127	12	33	

* Payment is not required for these car parks and there are no records of the number of users.

** The figure for total parking spaces includes disabled bays.

Section 6 – Parking permits

There are three types of permit that allow motorists to park in areas/bays where controlled parking schemes apply; these are: residents' permits, business permits and visitors' vouchers. Please see the tables that follow for permit costs and the numbers of permits issued.

The Bromley Town Centre Controlled Parking Zone was introduced in 1999 with others being implemented over following years.

The permit areas have been introduced to ensure that there is a balance between the need for residents to be able to park near their homes and the needs of other motorists. Some of these areas have been further divided to allow greater control.

In excess of 90% of all permit applications and renewals are now received online, which demonstrates that the service is very well used. Copy documentation is only required for new applications, but in order to ensure the integrity of the permit scheme, the Council may undertake sample checks at any time to verify applicants' details, including requesting copy documents as appropriate.

The table on page 11 shows the total number of residents' permits and visitors' vouchers issued between 1st April 2016 and 31st March 2017.

The table on page 12 shows the total number of business permits issued between 1st April 2016 and 31st March 2017.

Residents' permits and visitors' vouchers issued between 1st April 2016 and 31st March 2017

Parking area	Zone	Times of operation	Days of operation	Year introduced	Permit Cost (£)	Total issued	Total visitors' voucher books (15 per book)
Barnmead Road	BAR	10am – 12noon	Monday – Friday	2015	40	63	21
Beckenham	BEC	8.30am – 8pm	Monday – Sunday	2012	80	115	64
Beckenham	F	8.30am – 8pm	Monday – Sunday	2006	80	61	68
Bromley Central	A*	(Conditions apply)		1998	80	633	78
Bromley North	B	12noon – 2pm	Monday – Saturday	1998	40	1,548	601
Bromley South	C	12noon – 2pm	Monday – Saturday	1998	40	2,525	942
Burnt Ash Lane	G	8am – 6.30pm	Monday – Saturday	2004	80	1	0
Burnt Ash Lane (North)	J	11am – 1pm	Monday – Friday	2004	40	58	16
Camden Grove, Chislehurst	N	8am – 8pm	Monday – Sunday	2009	80	31	33
Chatterton Village, Bromley	W	12noon – 2pm	Monday – Friday	2009	40	464	156
Chelsfield	CH	12noon – 2pm	Monday – Friday	2017	40	24	0
Clock House, Beckenham	Z1	8am – 6.30pm	Monday – Friday	2009	80	221	152
	Z2/3	10am – 12noon	Monday – Friday	2009	40	872	345
	Z4	10am – 12noon	Monday – Friday	2011	40	14	8
Copers Cope, Beckenham	R	8am – 9.30am	Monday – Friday	2009	80	116	24
	R3	8am – 2.30pm	Saturday – Sunday				
Elms Estate	ELM	1pm – 2pm	Monday – Friday	2011	40	58	16
Farnborough	FV	8.30am – 6.30pm	Monday – Saturday	2009	80	5	3
Farnborough	WR	9am – 5pm	Monday – Friday	2015	80	33	8
Ledrington Road, Anerley	D	8.30am – 6.30pm	Monday – Saturday	2003	80	8	4
Linden Grove	LIN	12noon – 2pm	Monday – Friday	2012	40	17	5
Locksbottom	E	8.30am – 6pm	Monday – Saturday	2003	80	10	1
Maple Road, Penge	MAP	8.30am – 6.30pm	Monday – Saturday	2010	80	10	1
Orpington	H	10am – 12noon	Monday – Saturday	2004	40	45	18
	I	8am – 8pm	Monday – Saturday	2004	80	39	13
	K1/2/3/4	8.30am – 6.30pm	Monday – Saturday	2006	80	44	3
	M	11am – 2pm	Monday – Friday	2016	40	27	11
Petts Wood	S	8.30am – 6pm	Monday – Saturday	2009	80	3	0
Walnuts Estate, Orpington	WAL	9am – 5pm	Monday – Saturday	2010	80	23	20
Westmoreland Road	WMR	8.30am – 6.30pm	Monday – Saturday	2016	80	6	0
TOTALS						7,074	2,611

Residents in zone A can buy visitors' vouchers only for zones B and C

Business permits issued between 1 st April 2016 and 31 st March 2017						
Parking area	Parking zone	Times of operation	Days of operation	Year introduced	Permit cost £	Total permits issued
Beckenham Lane	BB	12noon – 2pm	Monday - Saturday	2016	100	0
Bromley North	B	12noon – 2pm	Monday - Saturday	2001	100	112
Bromley South	C	12noon – 2pm	Monday - Saturday	2001	100	285
Chatterton Village	W	12noon – 2pm	Monday - Friday	2009	100	44
Clock House	Z5	8am – 6.30pm	Monday - Friday	2011	100	19
Copers Cope	R	8am – 9.30am 8am – 2.30pm	Monday – Friday Monday – Sunday R3 only	2009	225	0
Locksbottom	LB	24 hours	Monday - Sunday	2003	225	19
Maple Road	MAP	8.30am – 6.30pm	Monday - Saturday	2010	100	0
Farnborough	WR	9am – 5pm	Monday – Friday	2015	100	10
TOTAL						489

Section 7 – Controlled Parking Zones and Restricted Parking Zones

Controlled Parking Zones (CPZs) are areas, often around town centres or rail stations, where the Council has implemented various measures to control and manage the parking demands of residents, shoppers, businesses, visitors and commuters. These measures include waiting restrictions and designated parking bays, such as residents, business and pay to park.

Within a CPZ, the hours of control that apply to single yellow lines and permit parking bays are usually the same. The distinguishing feature of a formal CPZ as opposed to an area where some controlled parking operates is that the hours when restrictions apply are displayed on signs at the entrances to the zone. It is not necessary to provide signs at each separate length of yellow line unless the restrictions in a road within the zone differ to the rest of the zone. The main exceptions to the uniform time restriction within a CPZ are double yellow lines, which prohibit parking “at any time” (i.e. 24 hours a day, every day) and do not require signs in addition to the lines themselves. Any other exceptions have to be specifically signed as having different hours of control to the general hours of the scheme in question.

Within an RPZ, waiting and loading restrictions are uniform throughout the zone. The restrictions are indicated by zone entry signs and there may also be additional time plates within the zone, but there will be no yellow lines or yellow kerb marks. Provision may be made for parking and loading within a zone and such bays will have individual signs and will be delineated either by white road markings, or physical features, e.g. block paving.

Section 8 – Enforcement and legislation

In October 1993, the control and enforcement of all on-street parking throughout the Borough was taken over by the London Borough of Bromley. The Police were responsible prior to this date. Enforcement was carried out under the 1991 Road Traffic Act until 31st March 2008, when this legislation was superseded by the Traffic Management Act 2004. (Motorists should also be aware that red routes also operate in urban areas; these are marked by red lines at the side of the road. Red routes are enforced by Transport for London and are used mainly on major bus and commuting routes).

Penalty Charge Notices are issued on our behalf (as the enforcement authority) by our parking contractor; Indigo Park Services UK Limited (formerly Vinci Park Services UK Limited). It is common practice for the name of the enforcement authority to be on the Penalty Charge Notice, not that of the contractor. This ensures that there is no confusion about who is responsible for issuing the notice and where any communication should be addressed.

Bus lane enforcement is carried out under the Road Traffic Regulation Act 1984 (as amended) and London Local Authorities Act 1996 (as amended).

Section 9 – Contravention charges

The table below summarises the charges for parking and bus lanes contraventions and how they apply in Bromley.

	More serious contraventions	Less serious contraventions
Band A (All roads within Bromley Town Centre Controlled Zone)	£130	£80
Band B (All roads outside Bromley Town Centre Controlled Zone)	£110	£60
Bus lanes	£130	N/A
Off-street (car parks) (All car parks within London Borough of Bromley are designated as Band B)	£110	£60

Please note that these charges will be discounted by 50% if paid within the discount period as specified on the Penalty Charge Notice. In circumstances where a driver was visiting a resident and received a PCN for parking in a permit bay, the lower charge will apply if the driver can produce a visitors' voucher valid for the date of the contravention or other acceptable evidence.

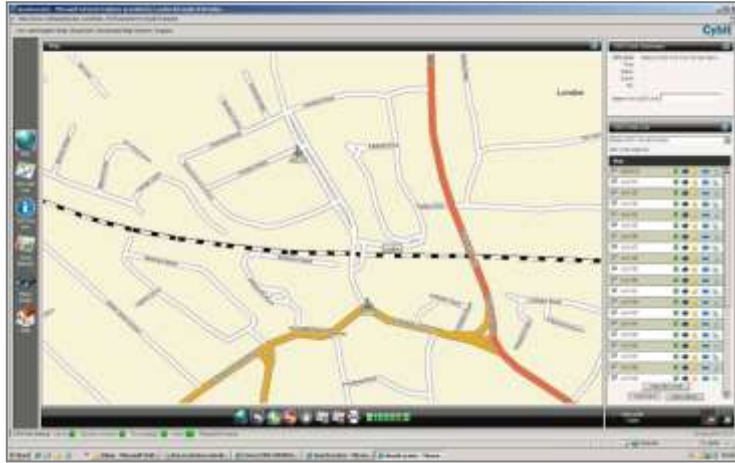
Section 10 - Benefits of Geographical Positioning System (GPS) technology

The benefits of using GPS include:

- security to CEOs when working alone; an officer at a location for an unusual length of time can be identified and if necessary, assistance can be arranged very quickly;
- an improved enforcement strategy based on the data being gathered;
- clearer records of enforcement in specific areas;
- The ability to deploy CEOs quickly.

The images below show how GPS works to track CEOs on duty.





Section 11 – Body Worn Video (BWV) devices and the standards that must be met



Footage obtained from BWV devices provides us with more details of a parking contravention. As a result, we are better prepared to assure fairness, transparency and accountability in the appeal process and in dealing with complaints. The footage can also be used to provide evidence of physical assaults and verbal abuse to officers.

All our procedures have been approved and are in line with best practice guidance from the Information Commissioner's Office (ICO); the regulator for the Data Protection Act (DPA) 1998. This is legislation that regulates the processing of personal data or sensitive personal data, whether processed on computer, CCTV, still camera or any other media.

Section 12 - CCTV enforcement



In June 2016, new technology was introduced in Bromley to enforce the yellow zig zag lines outside school entrances. Fixed CCTV cameras are now used to deter dangerous parking which compromises the safety of children and pedestrians.

The fixed cameras are deployed across the Borough where high non-compliance is known to occur. The cameras remain in situ until full compliance is reached, recording contextual images as well as close-ups showing vehicle registration marks. A qualified officer reviews each recording and where it is determined that a contravention has occurred, a PCN is issued and sent out by post.

Where non-compliance is found to be continuously high, the specific area is referred to the Council's Traffic Design team to investigate alternative solutions in consultation with local communities.

Section 13 – Bus lane enforcement using CCTV

CCTV has been used to enforce bus lane restrictions throughout the Bromley Borough since 2003. The bus lane enforcement scheme forms part of a wide range of measures aimed at improving reliability and punctuality of public transport, reducing congestion and pollution and allowing access for the delivery of goods.

Motorists who use bus lanes during the restricted hours of operation can cause obstruction or hazard to other motorists/road users and delay public transport.

Bus lane restrictions are enforced under the Road Traffic Regulation Act 1984 (as amended) and the London Local Authorities Act 1996 (as amended).

Further information about CCTV and recording devices, including legislation and certifications granted is available at: <https://www.gov.uk/government/publications/list-of-certifications-granted-for-approved-devices>

The following table provides information about the bus lanes within the borough and times of operation.

Road name	Location	Times of operation
Anerley Road	Anerley	4pm – 7pm, Monday to Friday
Beckenham Lane	Bromley	7am – 7pm, Monday to Sunday
Bromley Common	Bromley	7am – 10am, Monday to Friday
High Street	Bromley	7am – 7pm, Monday to Sunday
London Road/High Street (Local)	Bromley	7am – 7pm, Monday to Sunday
Mitchell Way	Bromley	At any time
Widmore Road	Bromley	7am – 10am, Monday to Friday 10am – 4pm, Saturday
Crystal Palace Parade	Crystal Palace	At any time
Crystal Palace Park Road	Crystal Palace	7am – 10am and 4pm – 7pm, Monday to Friday
Cray Avenue	Orpington	7am – 10am and 4pm – 7pm, Monday to Friday
High Street (south west side)	Penge	7am – 10am and 4pm to 7pm, Monday to Saturday
High Street (north east side)	Penge	7am – 7pm, Monday to Saturday
Bromley Road	Shortlands	7am – 10am, Monday to Friday

Section 14 - Enforcement requests

When we receive a request, we pass the details to our parking contractor and arrangements are made for a CEO or one of our mobile CCTV units to visit the location. Our web-based tracking system enables us to identify the position of the nearest CEO and redirect them to the location of the enforcement request, which means we are able to offer a more efficient service.

The number of PCNs issued as a direct result of enforcement requests continues to increase each year. The steady increase in recent years may be due to providing a much more efficient method for members of the public to request parking enforcement. This involves completing an electronic form (e-form) online whereby

the details are submitted directly to our parking contractor, who can quickly arrange for a nearby officer to visit a specific location.

We are aware that problems are regularly caused by drivers parking in front of dropped kerbs and restricting access to residents' drives, i.e. around schools. In these circumstances, residents can complete an e-form online to register their address and authorise routine enforcement of the dropped kerb outside their property. This service allows the resident to provide details of the times when problems are likely to occur and we can arrange enforcement visits accordingly.

Section 15 – Road safety outside schools and PCNs issued

We work very closely alongside our Road Safety Division to maintain an environment that is safe for its residents and visitors. From time to time and as required, we adopt a joined up approach to work on measures to address road safety issues at specific locations.

Between 1st April 2016 and 31st March 2017, a total of 1,298 PCNs were issued to motorists who stopped or parked on the yellow zig-zag markings.