

Appendix A

Report Figures

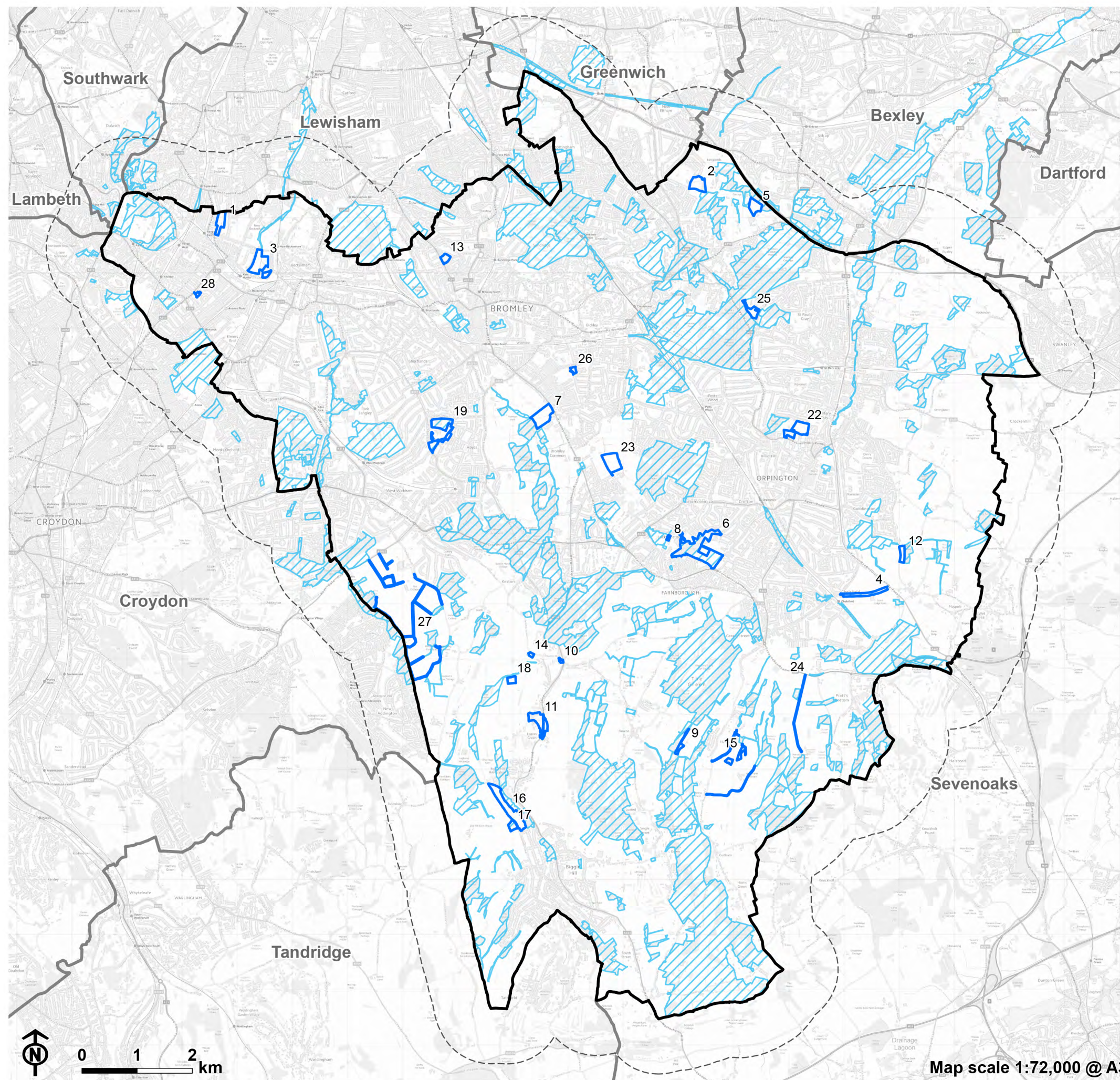







Figure 1: Summary of Site Assessment

-  London Borough of Bromley
-  Bromley 1km buffer
-  Neighbouring local authority
-  Site of Importance for Nature Conservation
-  Site assessment boundary

1. Alexandra Recreation Ground
2. Belmont
3. Cator Park
4. Chelsfield Green
5. Chislehurst Cemetery
6. Darrick Wood
7. Elmfield Wood
8. Farnborough Recreation Ground
9. Hangrove
10. Keston Church
11. Leaves Green Common
12. Lillys Wood
13. London Road Cemetery
14. Milchden Apple Trees
15. Millfield Wood
16. Oaklands Lane Saltbox Hill
17. Oaklands Lane Soakaway
18. Pear Orchard
19. Pickhurst Green and Cupola Wood
22. Poverest Recreation Ground, Meadow and Allotments
23. Richmal Crompton Fields
24. SNAG Farm Wood Area
25. St Paul's Green
26. Whitehall Recreation Ground
27. Wickham Court Farm
28. Winsford Gardens

Please note: Non-consecutive site ID numbers are due to sites 20, 21 and 22, that were merged into one site for survey (22 - Poverest recreation Ground, Meadow and Allotments).

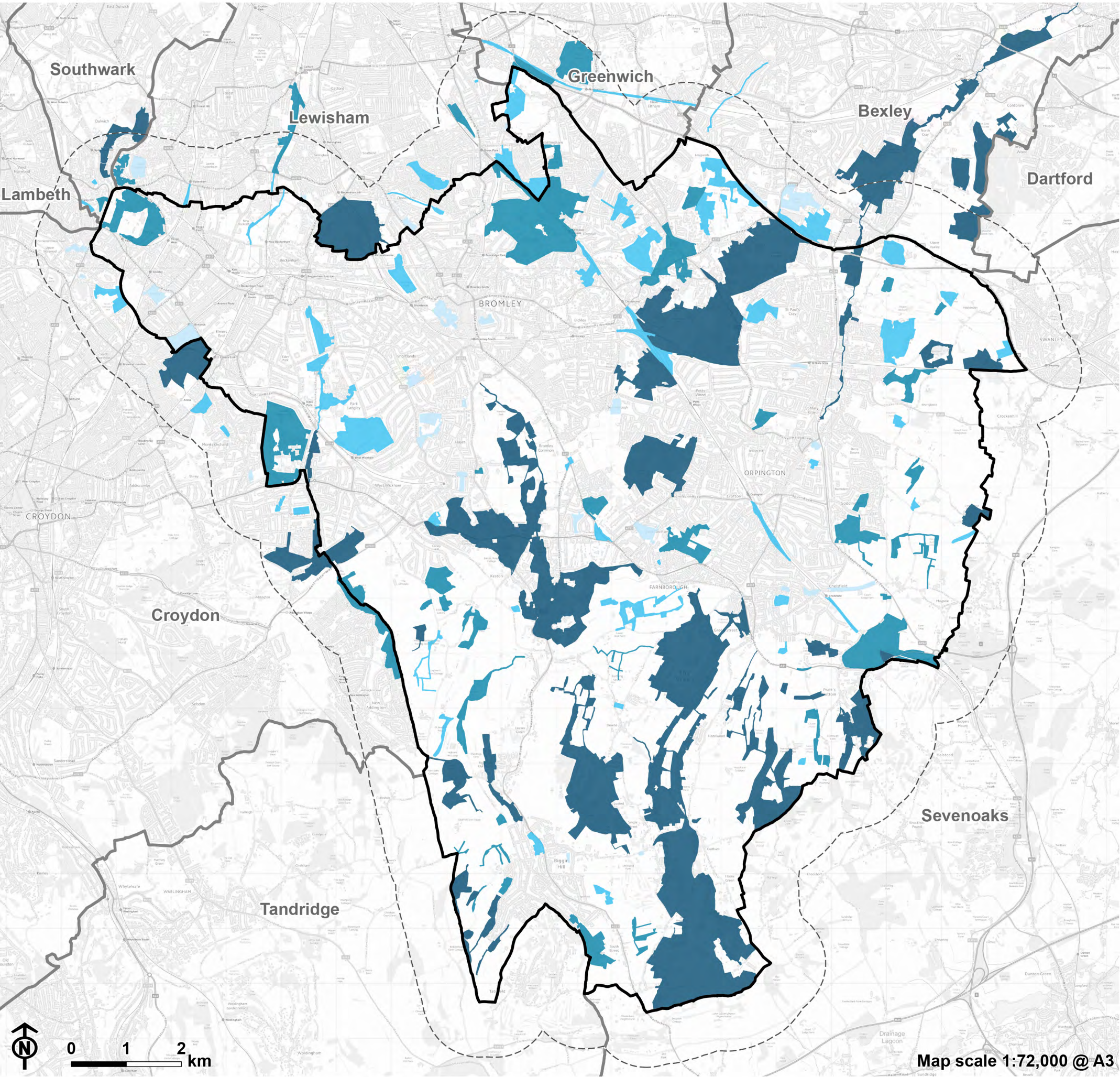


Figure 2: SINC Network

London Borough of Bromley

Bromley 1km buffer

Neighbouring local authority

Site of Importance for Nature Conservation

Metropolitan

Borough Grade 1

Borough Grade 2

Local

Extent of SINC network within Borough			
SINC Category	Number of sites	Area within Bromley (Ha)	Coverage within Bromley (%)
Metropolitan	25	1840.99	12.26
Borough (Grade 1)	31	622.52	4.15
Borough (Grade 2)	42	363.38	2.42
Local	21	76.17	0.51
Total	119	2903.06	19.34

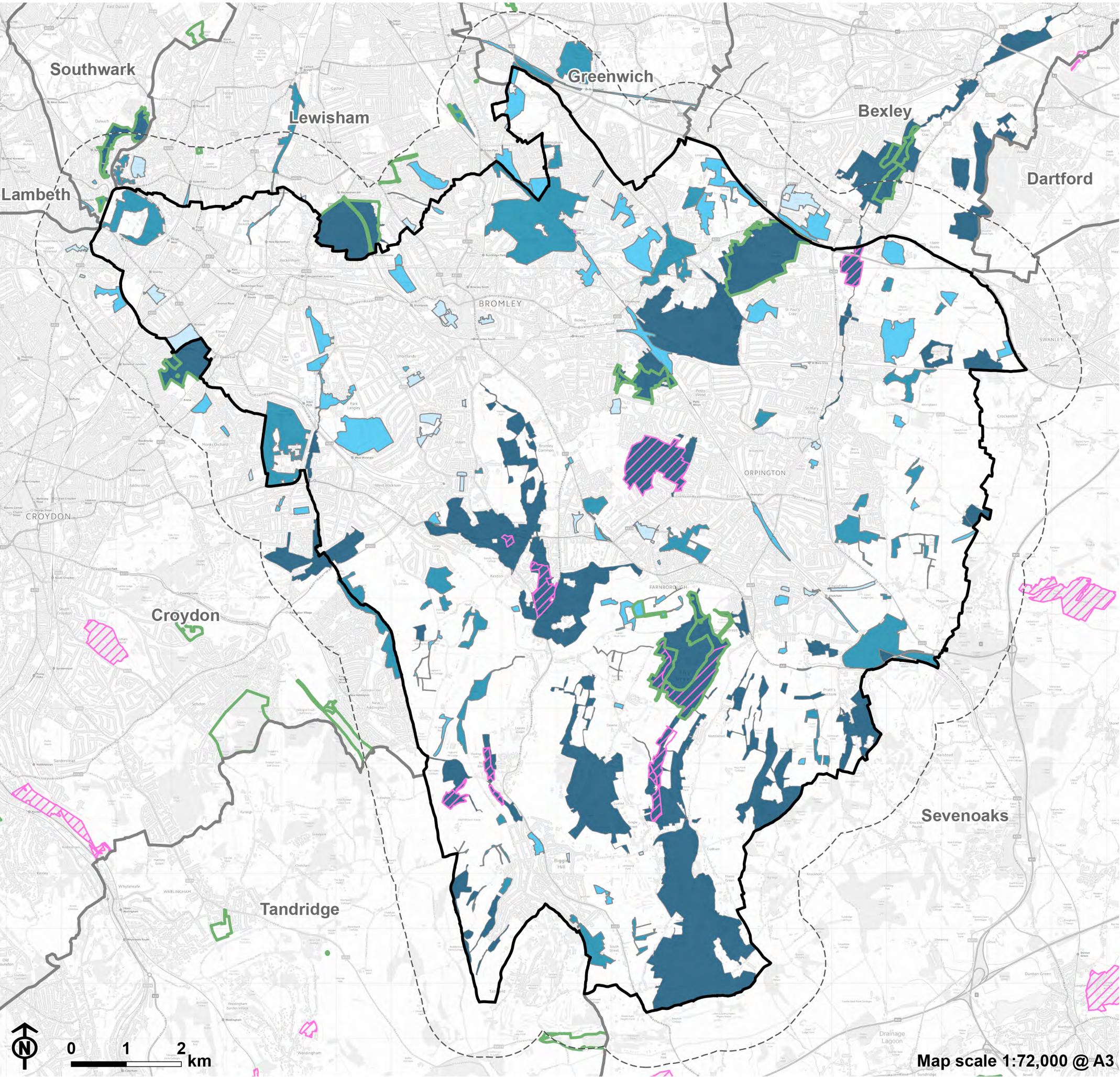


Figure 3: Designated Site Network

London Borough of Bromley

Bromley 1km buffer

Neighbouring local authority

Local Nature Reserve

Site of Specific Scientific Interest

Sight of Importance for Nature Conservation

Metropolitan

Borough Grade 1

Borough Grade 2

Local

Extent of designated site network within Borough (Ha)

	SSSI	LNR	SSSI and LNR	Only SINC	Total
SINC	167.45	183.95	60.59	2491.04	903.0
Non SINC	3.76	3.18	0.01	-	6.95
Total	171.21	187.13	60.6	2491.04	909.9

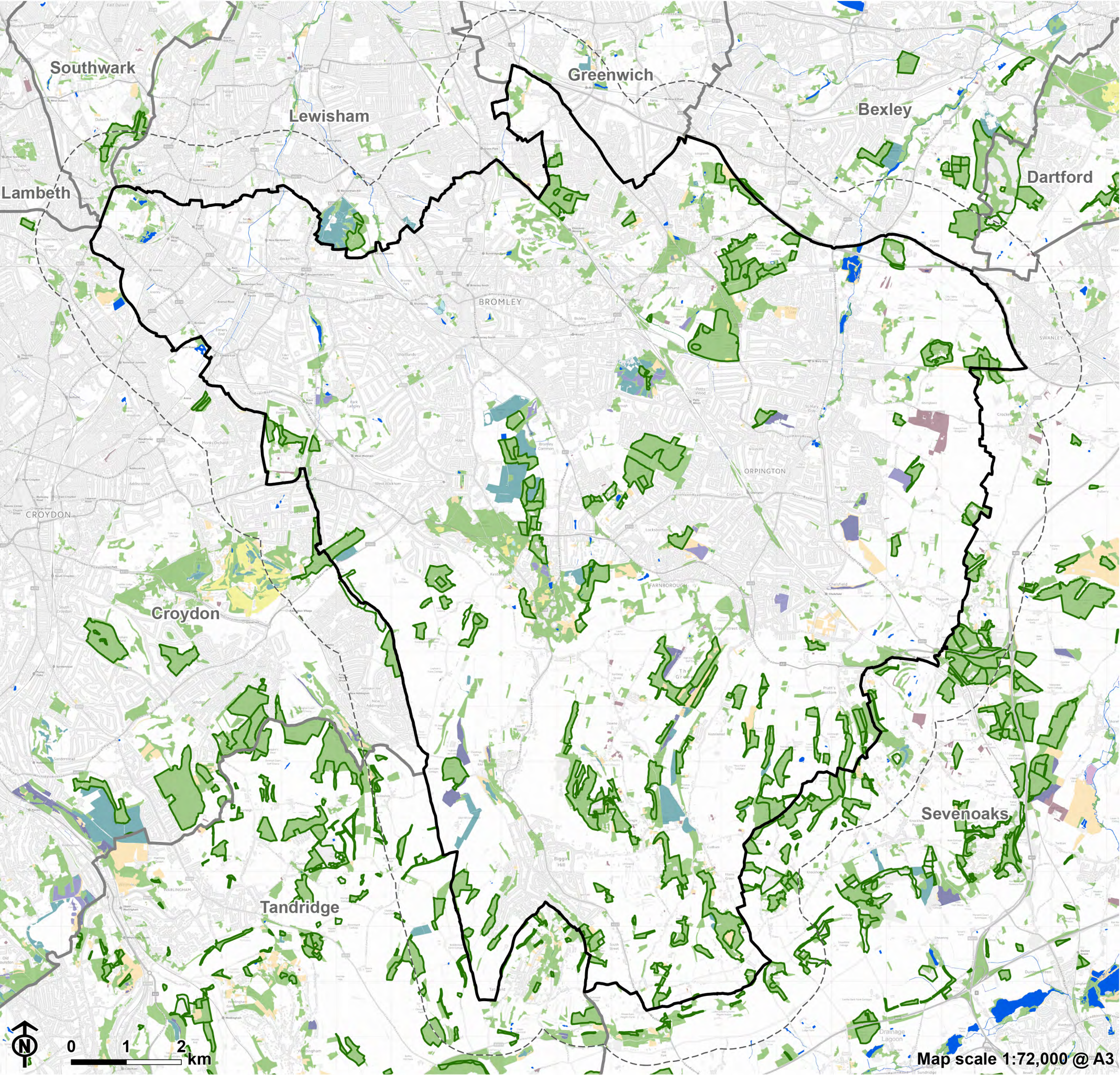


Figure 4: Priority and Notable Habitats

London Borough of Bromley

Bromley 1km buffer

Neighbouring local authority

Ancient Woodland Inventory*

Surface water

Priority Habitat Inventory

Coastal and floodplain grazing marsh

Deciduous woodland

Good quality semi improved grassland

Lowland calcareous grassland

Lowland dry acid grassland

Lowland heathland

Lowland meadows

Reedbeds

Traditional orchard

No main habitat but additional habitats present*

Extent of priority & notable habitats within the Borough

Priority habitat type	Area within Bromley (Ha)	Coverage within Bromley (%)
Ancient Woodland	947	6.31
Deciduous woodland	1841	12.26
Good quality semi improved grassland	153	1.02
Lowland calcareous grassland	52	0.34
Lowland dry acid grassland	3	0.02
Lowland heathland	10	0.07
Lowland meadows	42	0.28
No main habitat but additional habitats present	146	0.97
Reedbeds	0	0
Traditional orchard	41	0.27
Total	3236	21.55

*Refer to figure caption in the report.

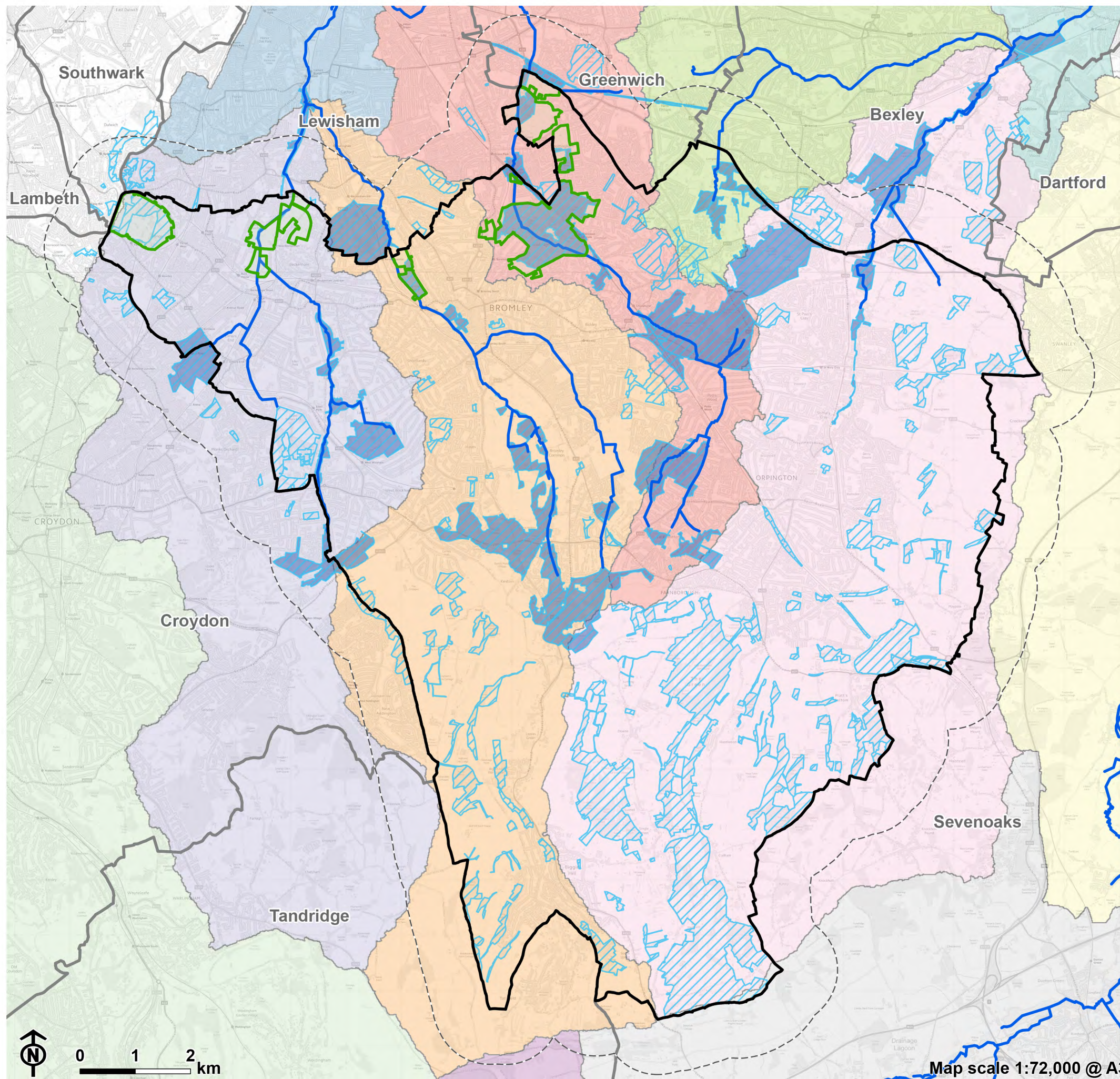


Figure 5: South East London Green Chain and Bromley's Waterways Network

- London Borough of Bromley
 - Bromley 1km buffer
 - Neighbouring local authority
 - SE London Green Chain
 - Site of Importance for Nature Conservation
- Waterways**
- OS Open River
 - SINC sites within the Waterways network
- Operational catchment**
- Lower Cray
 - Middle and Lower Darent
 - Pool River
 - Quaggy
 - Ravensbourne (Catford to Deptford)
 - Ravensbourne (Keston to Catford)
 - Shuttle
 - Upper Cray
 - Upper Darent
 - Upper Eden
 - Wandle (Croydon to Wandsworth) and the R. Gra

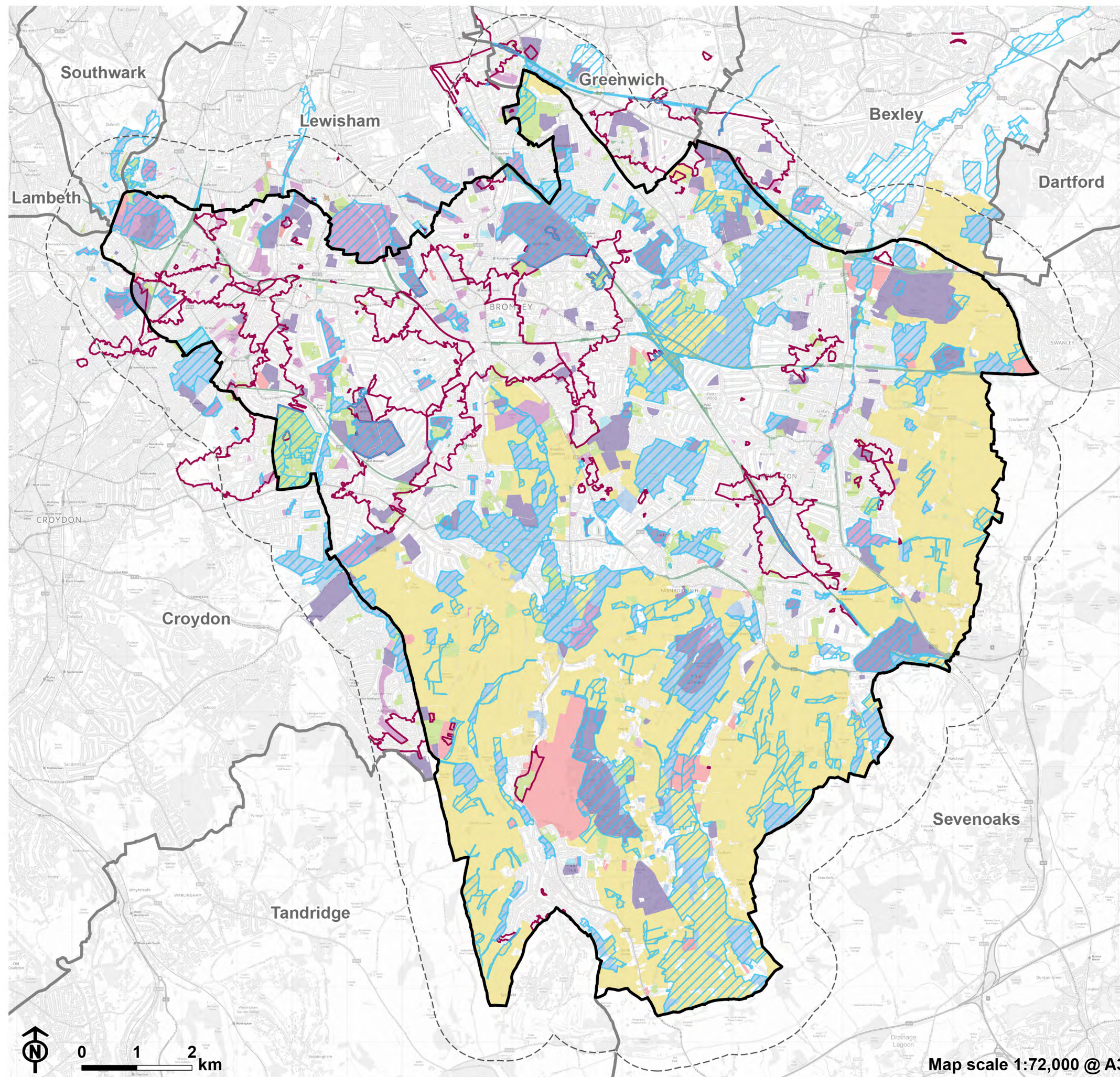

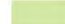






Figure 6: Areas of Deficiency in Access to Nature

-  London Borough of Bromley
-  Bromley 1km buffer
-  Neighbouring local authority
-  Area of deficiency in access to nature
-  Site of Importance for Nature Conservation
- Bromley open space***
 -  Allotments, Community Gardens and City Farms
 -  Amenity
 -  Cemeteries and Churchyards
 -  Children and Teenagers
 -  Civic Spaces
 -  Green Corridors
 -  Natural and Semi-natural Urban Greenspace
 -  Other
 -  Other Urban Fringe
 -  Outdoor Sports Facilities
 -  Parks and Gardens

*The Open Space dataset is provided by GiGL which covers Greater London only. Therefore, this map does not present cross boundary Open Space data for Tandridge District and Sevenoaks District.

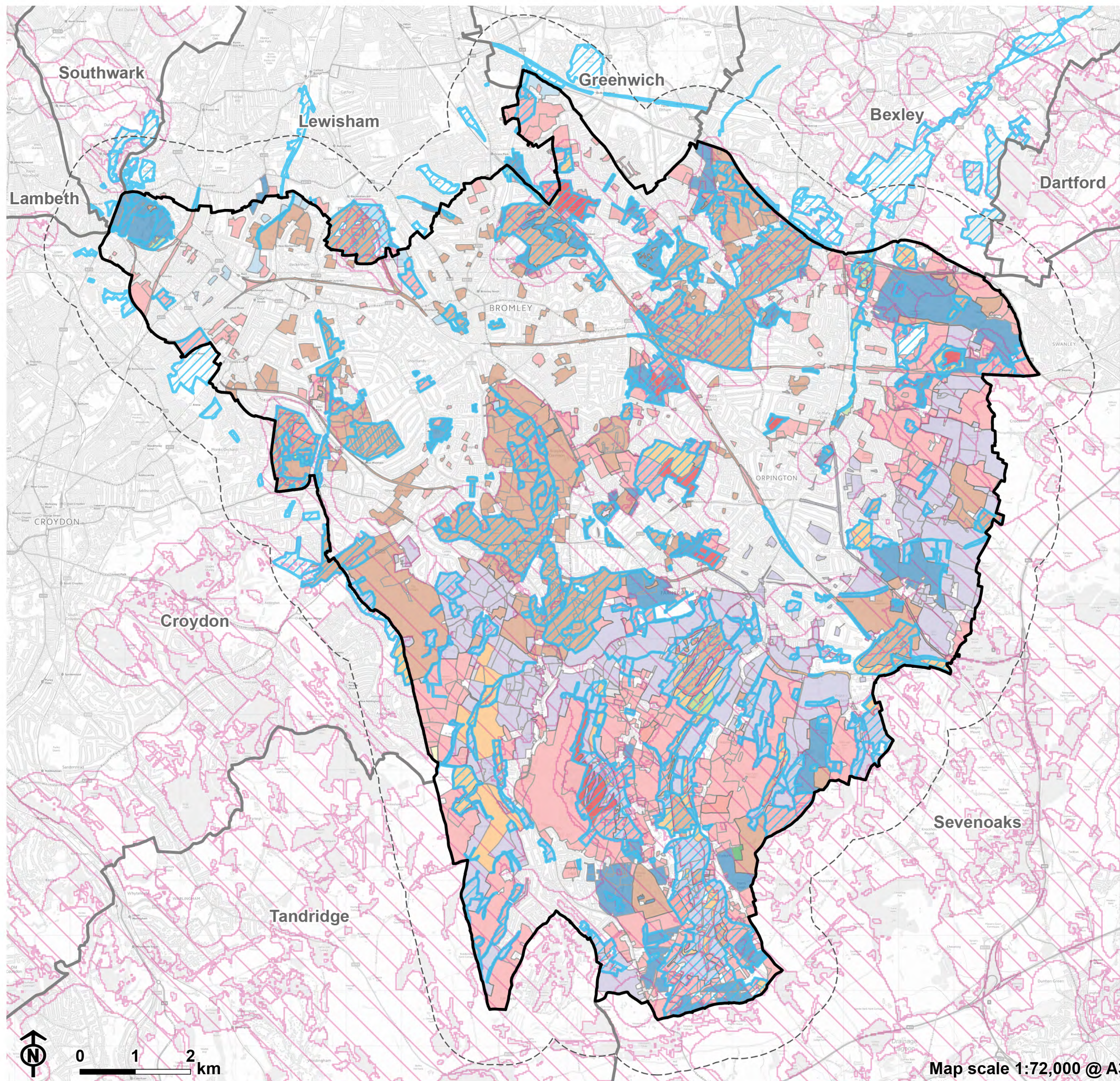


Figure 7: Existing Strategic Habitat Opportunities to support the SINC Network

London Borough of Bromley

Bromley 1km buffer

Neighbouring local authority

Site of Importance for Nature Conservation

National Habitat Network

Natural England Habitat Network*

Brorough-wide Network

GiGL BAP habitat suitability

Heathland opportunities

Create new/restore relict heath

Grassland opportunities

Create new/restore relict acid grass

Create new/restore relict chalk grass

Create new/restore relict meadow

Expand existing acid grass

Expand existing chalk grass

Expand existing meadow

Maintain existing acid grass

Maintain existing chalk grass

Mosaic habitat opportunities

Mosaic habitat creation/ restoration

Wetland opportunities

Create new/restore relict floodplain GM

Create new/restore relict pond

Create new/restore relict reed

Expand existing pond

Woodland opportunities

Create new/restore relict wood

Expand existing wood

Maintain existing wood

*The following National Habitat Network layers are presented; Habitat Creation/ Restoration, Restorable Habitat, Fragmentation Action Zone, Network Expansion Zone, Network Enhancement Zone 1, and Network Enhancement Zone 2.

Figure 8: Summary of SINC Review

