



Bromley / Lewisham Cable Route works update

27th May 2025



INVESTORS IN PEOPLE™
We invest in people Platinum



Project Overview

Project overview:


Sydenham to Churchfields is a 33kV FFC replacement scheme running a total distance of 4.5km, starting at Sydenham Grid and terminating at Churchfields Substation. This also requires to small HDD's under a Network Rail asset, and under a brook.


Works Involved: -

- Excavate trench from Sydenham Park Road MSS to Churchfields MSS.
- Installation of ducts to be in accordance with the x2 separate cable sections which is dependent on the route section.
- Crushed Limestone base and surround with stock boards running on top for added protection.
- Backfill trench accordingly with a like for like surface.

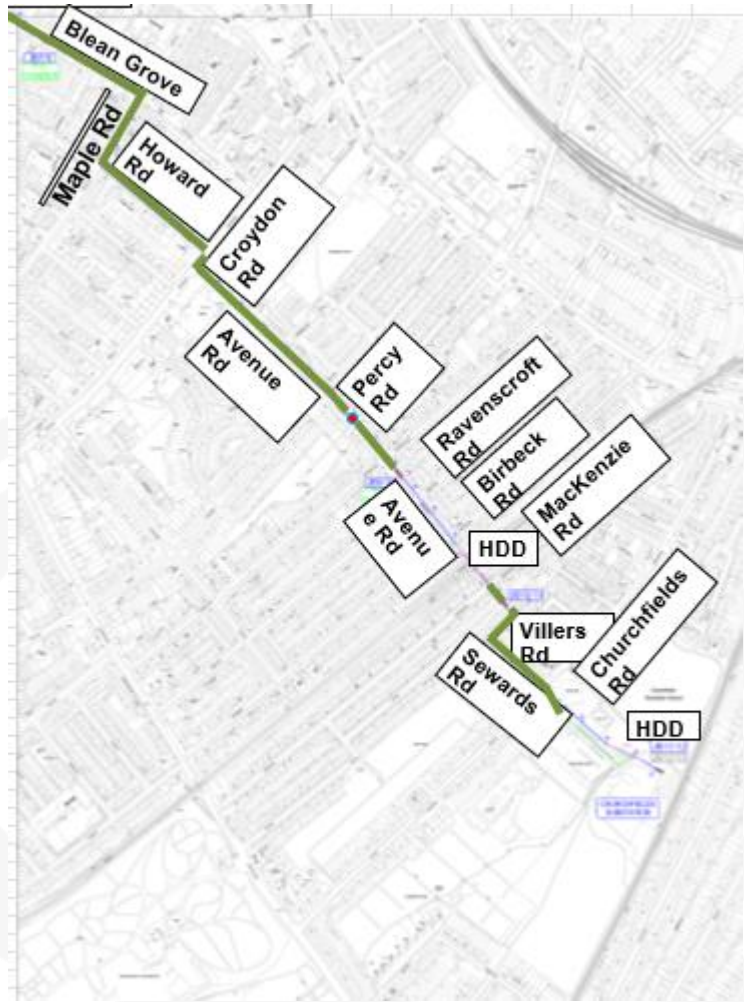
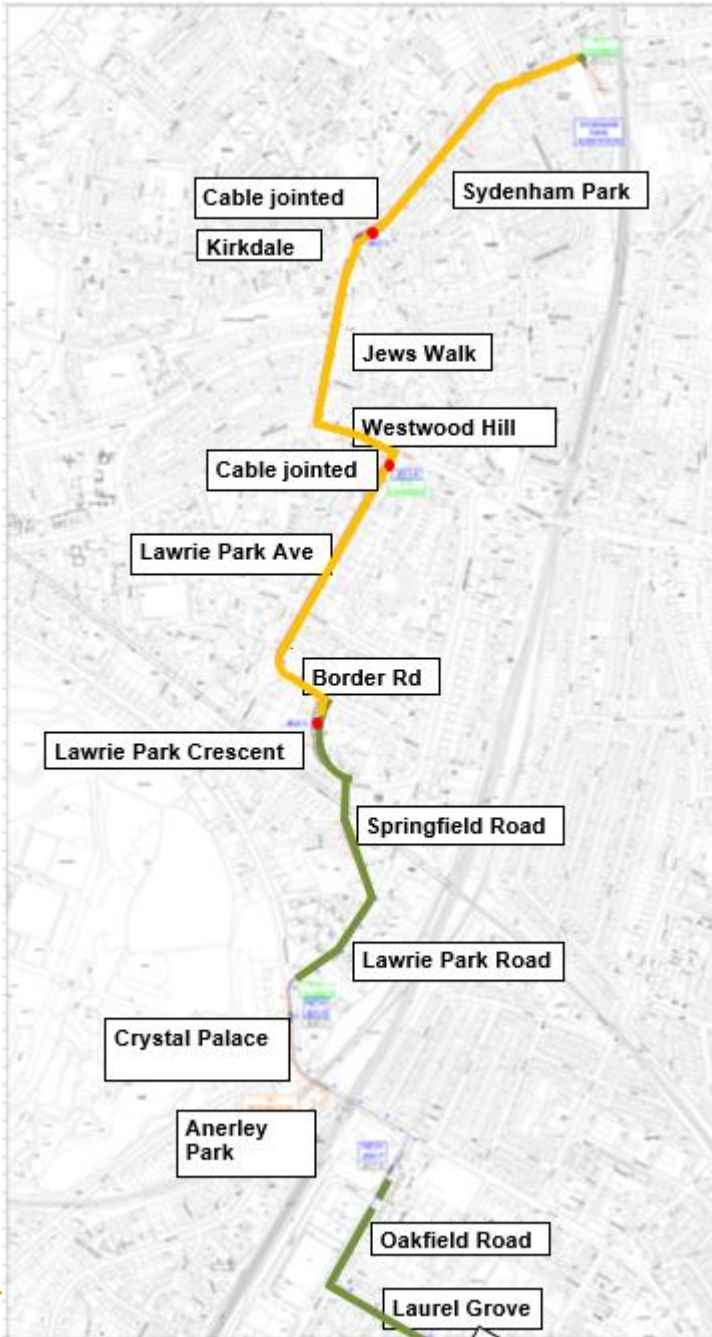
Cable Route Graphic

LEGEND

 - Installed ducting

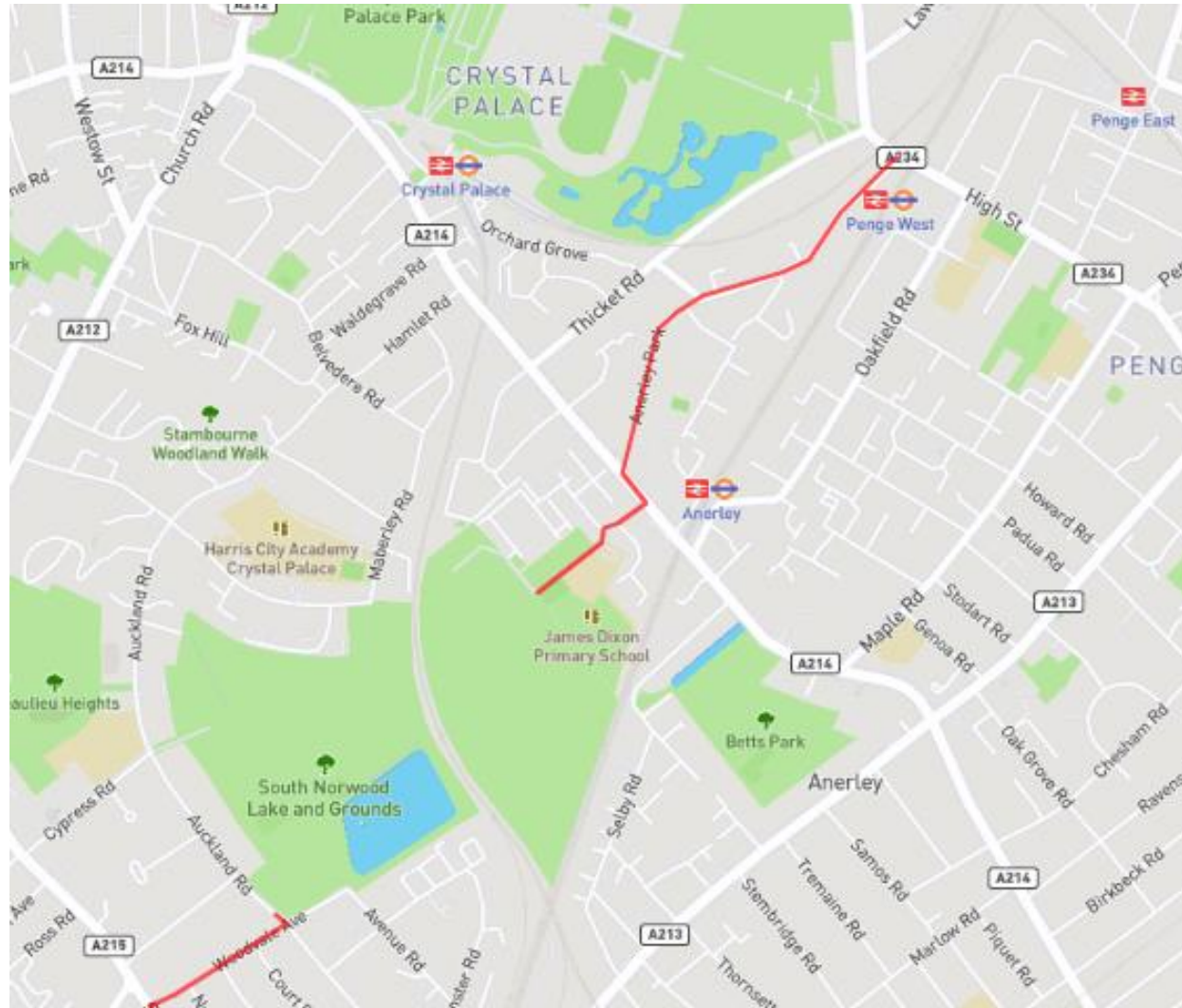
 - Installed cables

Total duct meterage installed: 3,550m of

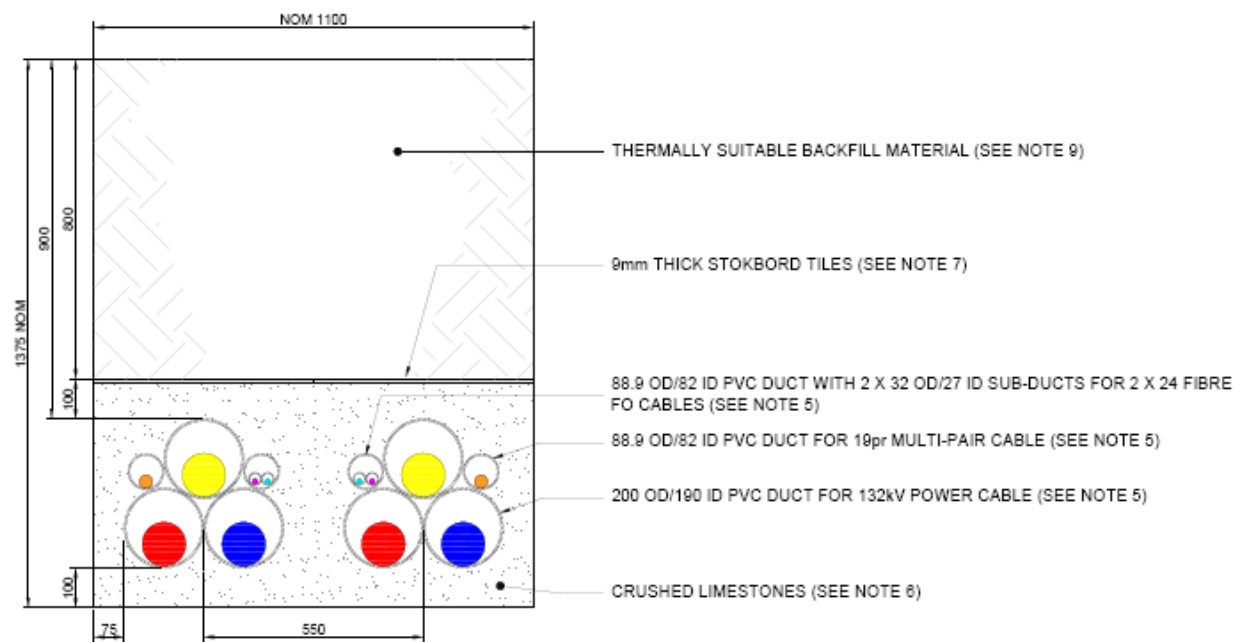


Cable Route Graphic

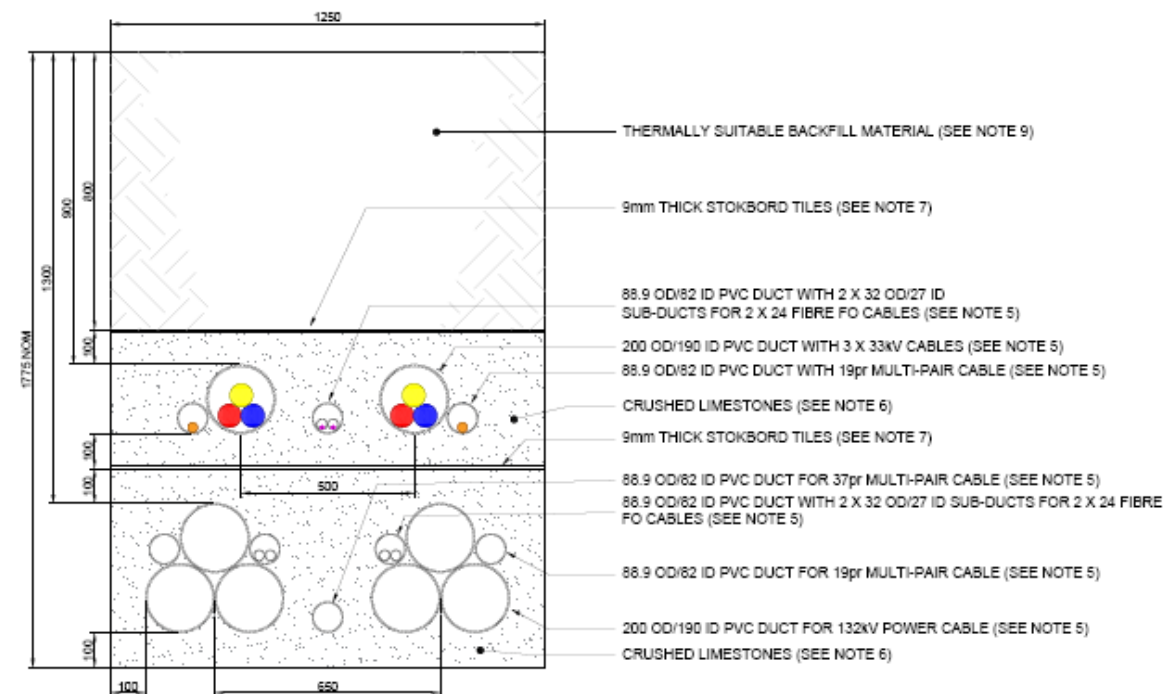
William booth Road
Anerley Road
Anerley Park



Trench cross section



TYPICAL TRENCH SECTION



**PROPOSED TRENCH SECTION WHERE 33kV
CABLE CIRCUITS TO SHARE THE TRENCH
WITH 132kV BEDDINGTON TO SYDENHAM
PARK CABLE CIRCUITS**

Current works

Avenue Road: estimated end date 25th July 2025. This is due to issues with the underground river we have uncovered pushing our works end date back. We are arranging for expert engineers to assist with this and are continuing with our works further down on Avenue Road.

Sydenham Park: estimated end date 30th June 2025

Lawrie Park Road: estimated end date 6th June 2025

Crystal Palace Park Road: estimated end date 15th August 2025

Joint bays - Joint bay dates yet to be confirmed

Joint bays to be completed:

Oakfield Road

Laurel Grove

Howard Road

Avenue Road

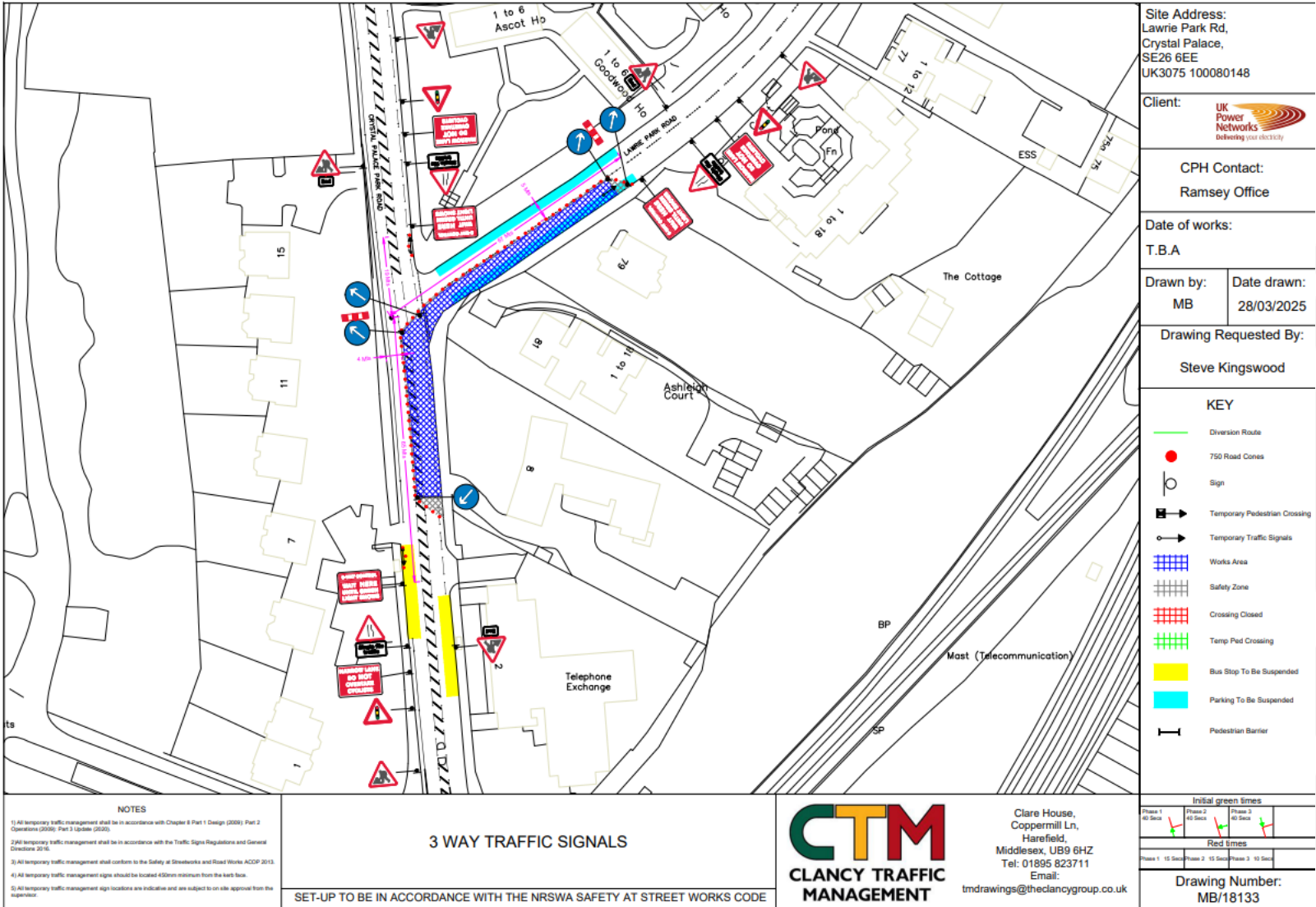
Seward Road

Churchfields MSS



October 2025 planned end date for joint bays and energisation

Crystal Palace Park Road – j/w Lawrie Park Road

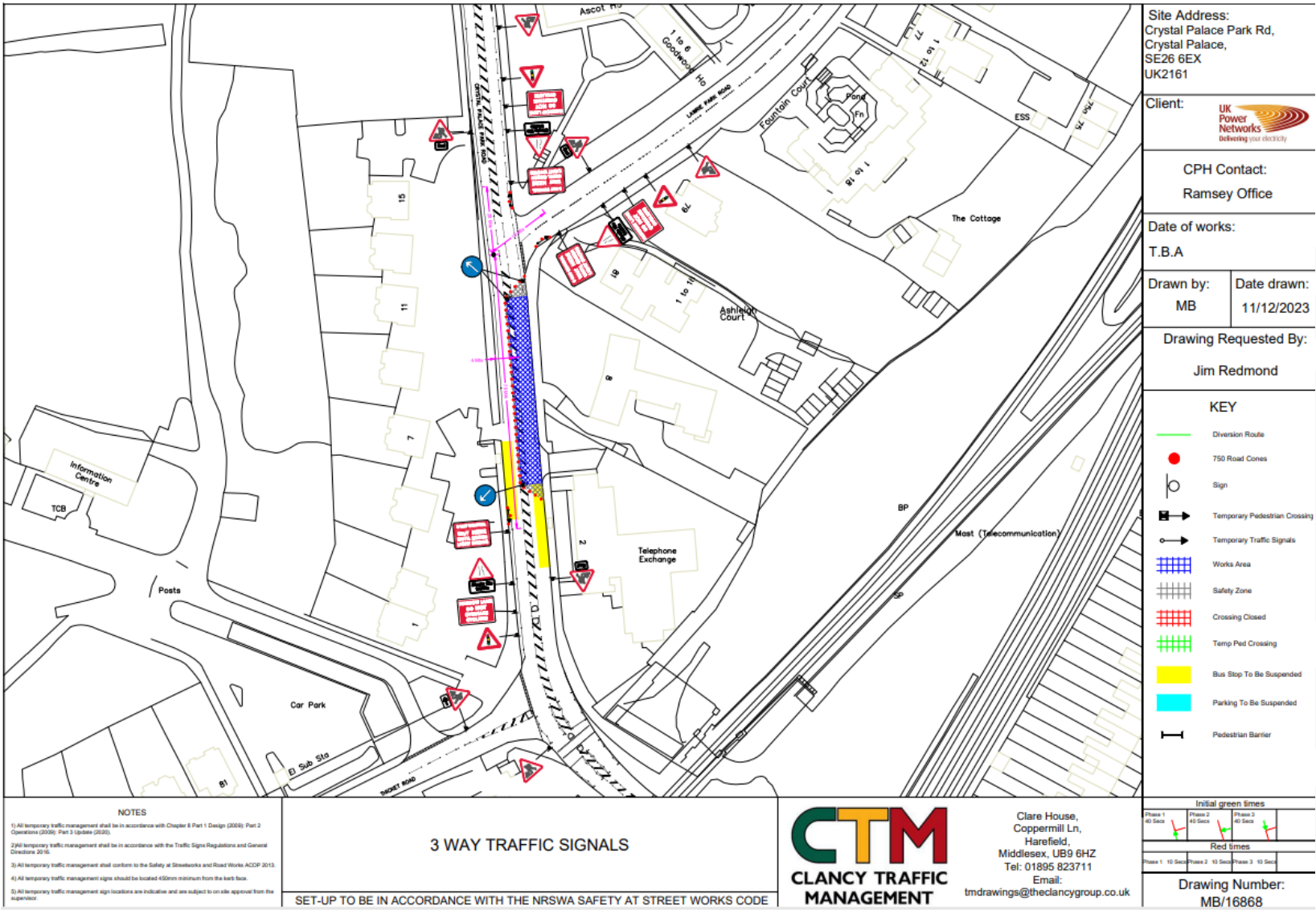


Start: 19.05.2025
Finish: 30.05.2025

3 way lights



Crystal Palace Park Road

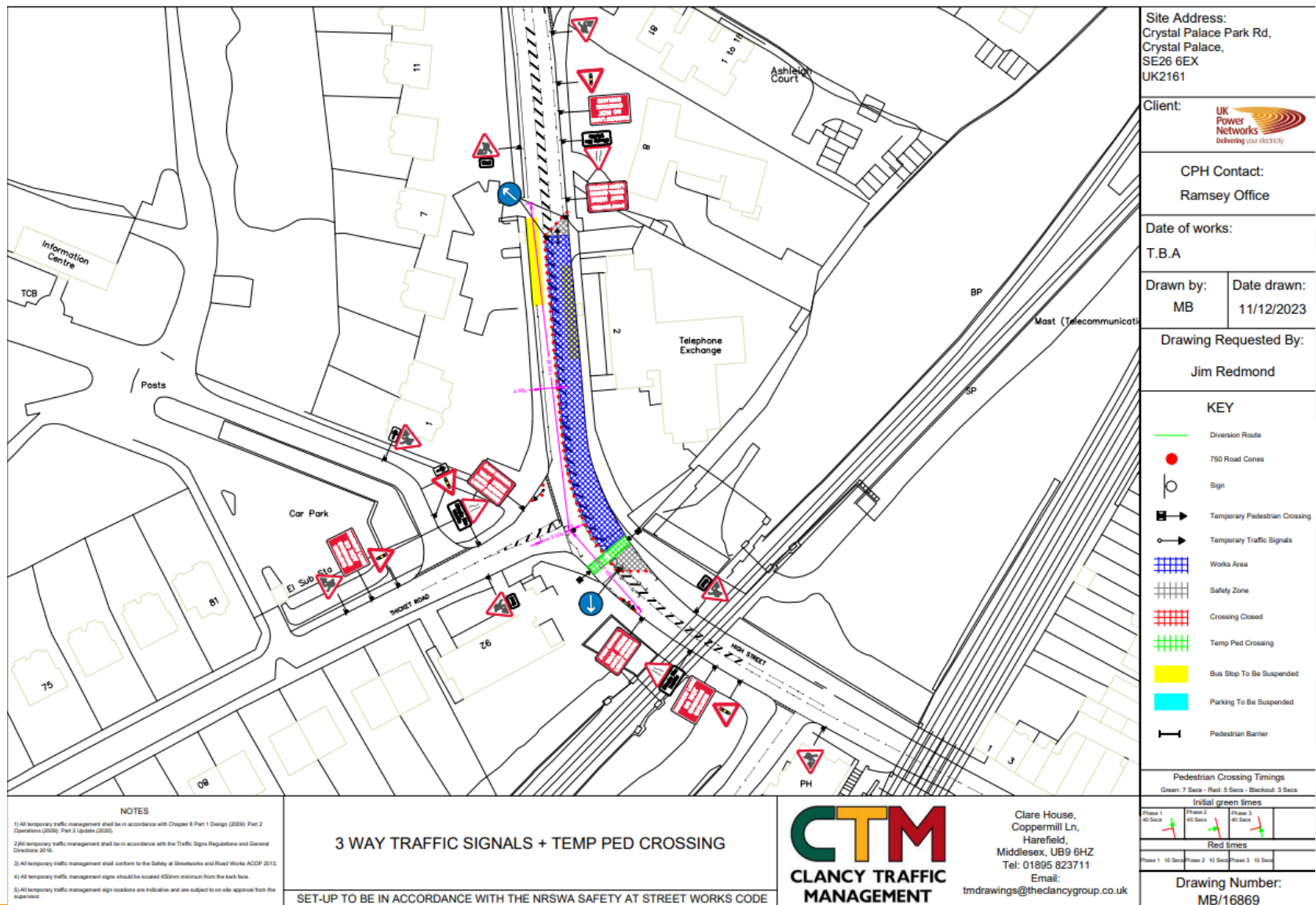


Start: 06.06.2025
Finish: 18.06.2025

3 way lights



Crystal Palace Park Road

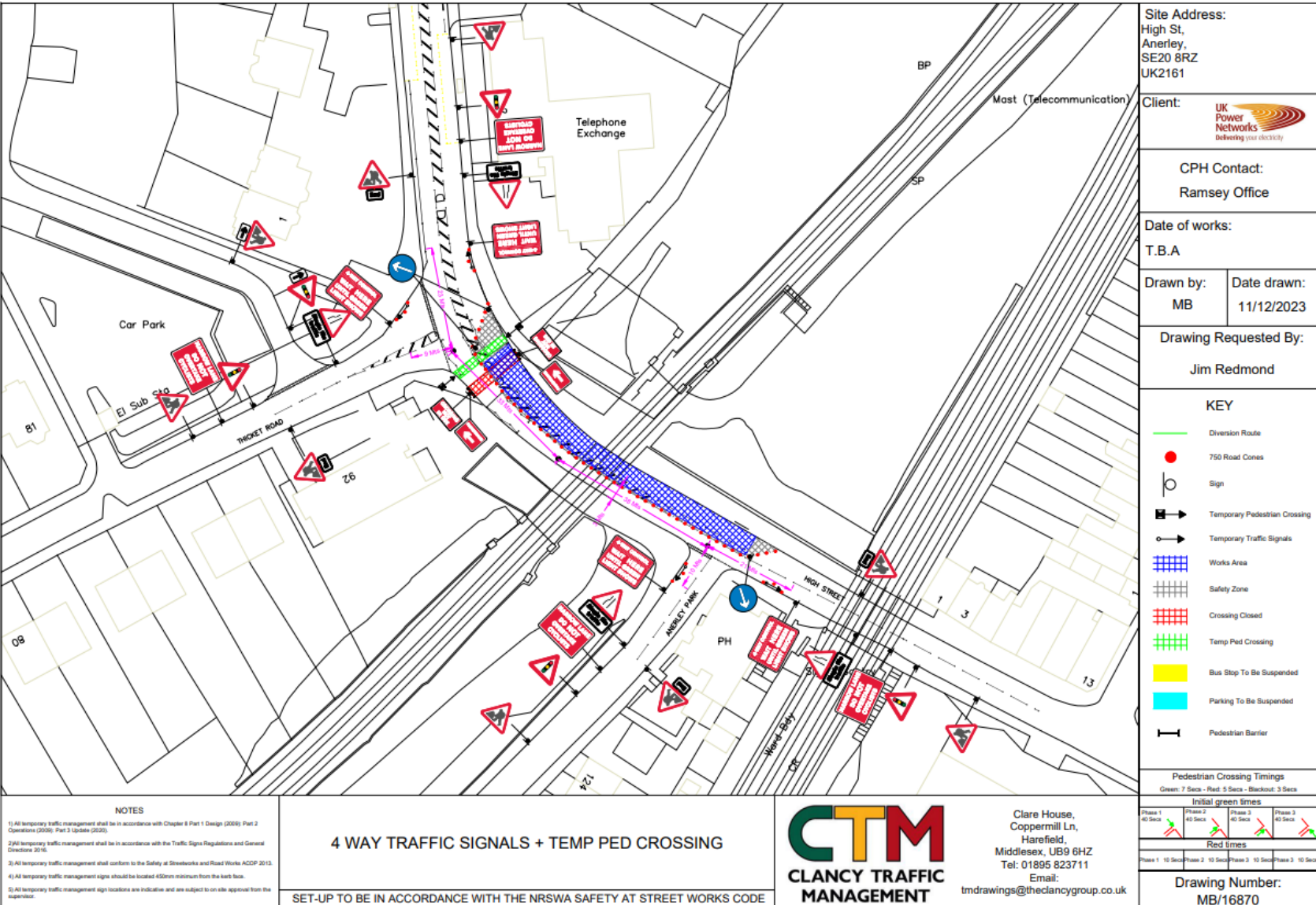


Start: 18.06.2025
Finish: 23.07.2025

3 way lights and temp
ped crossing



Crystal Palace Park Road

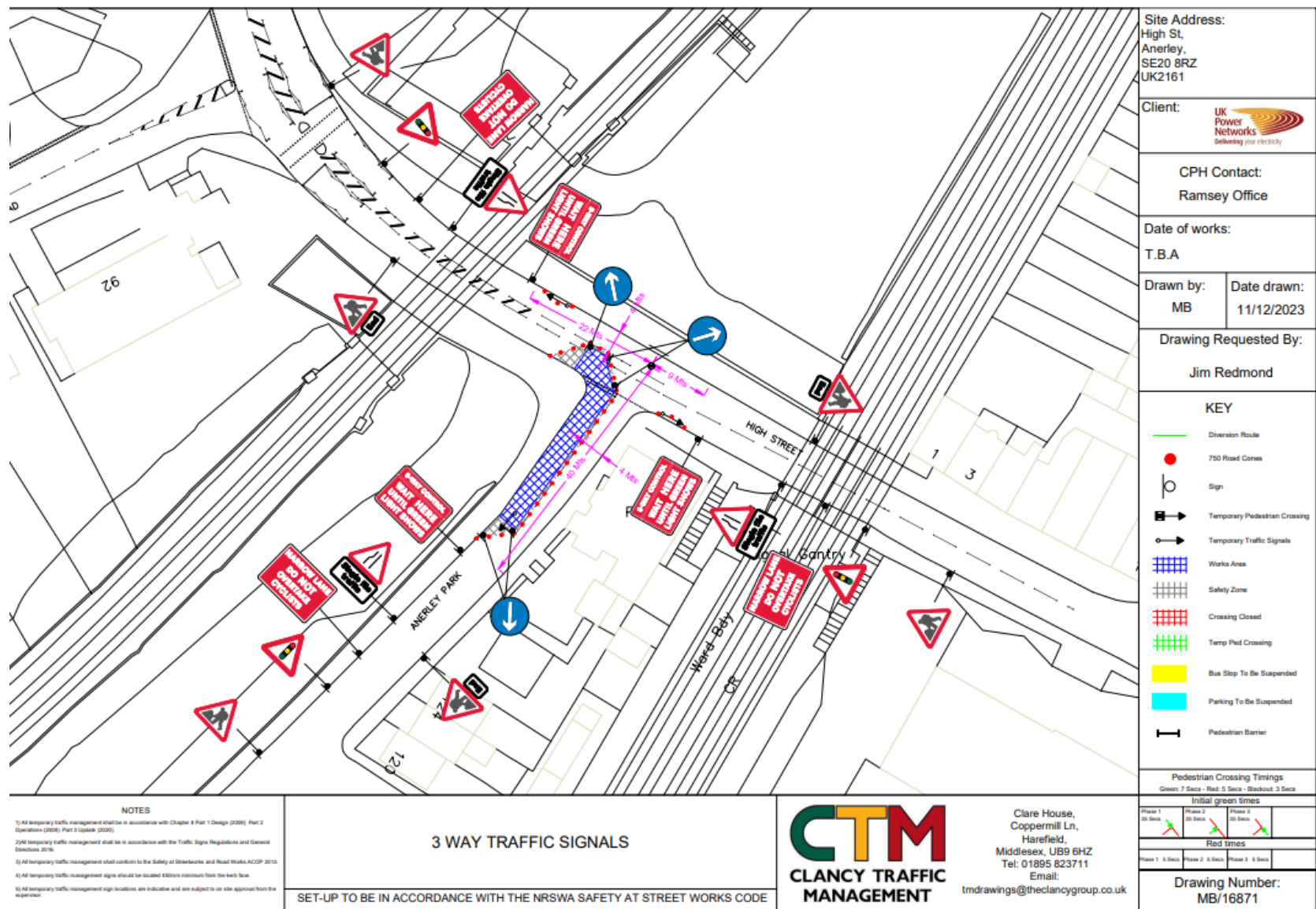


Start: 23.07.2025
Finish: 06.08.2025

4 way lights



Anerley Park

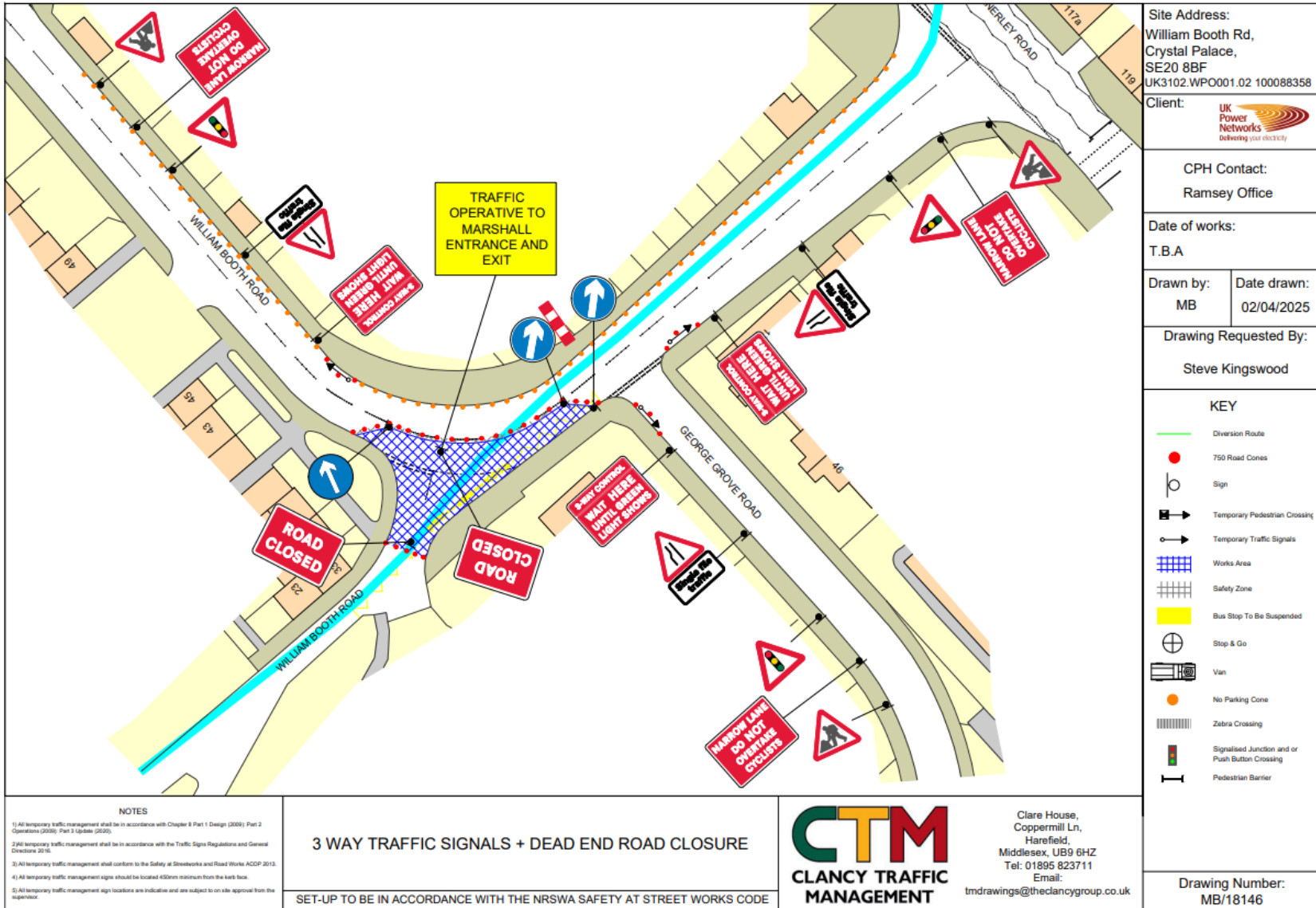


Start: 06.08.2025
Finish: 15.08.2025

3 way lights



William Booth Road

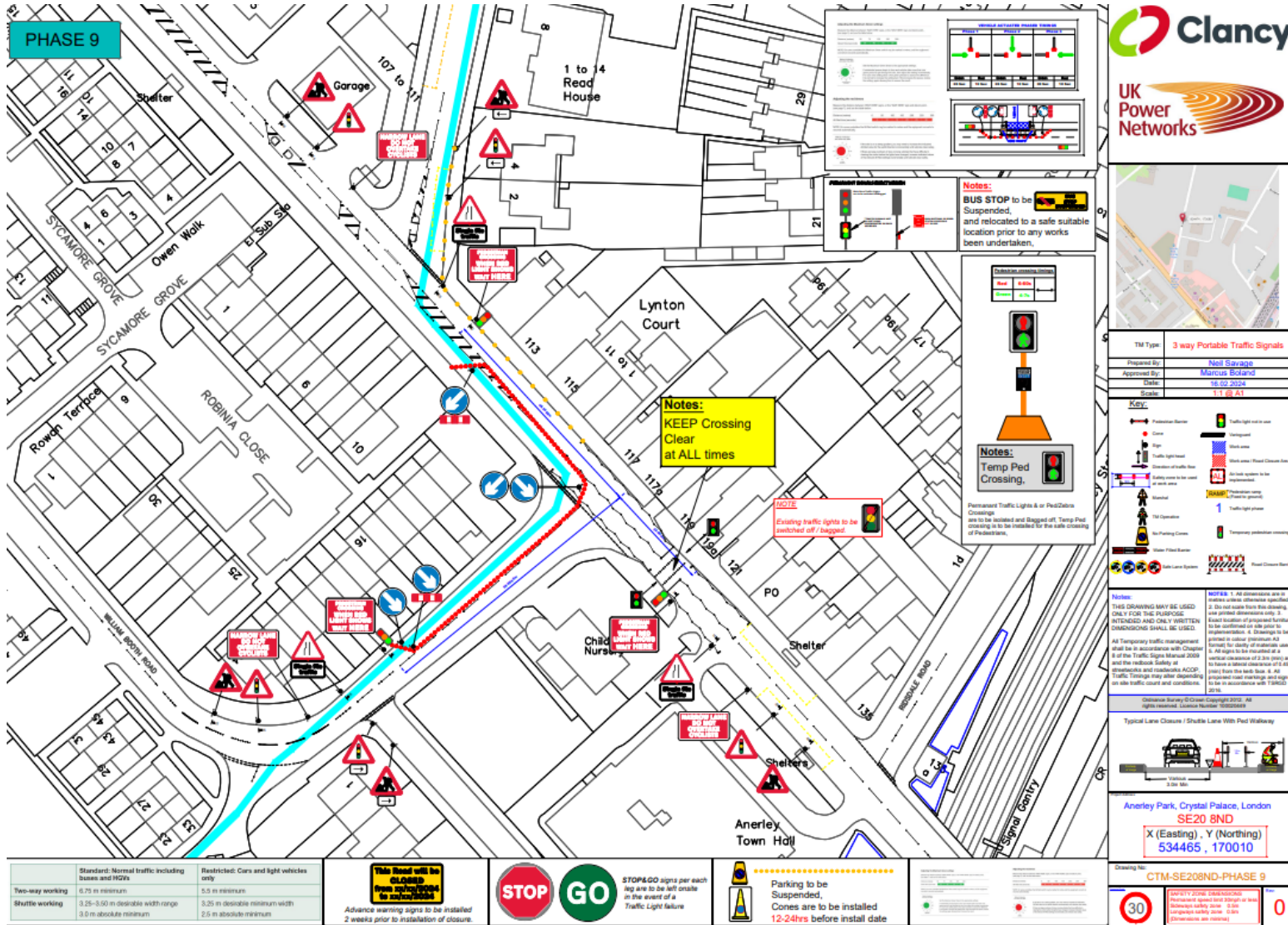


Start: 27.05.2025
Finish: 01.06.2025

3 way lights and dead end road closure



William Booth Road j/w Anerley Road



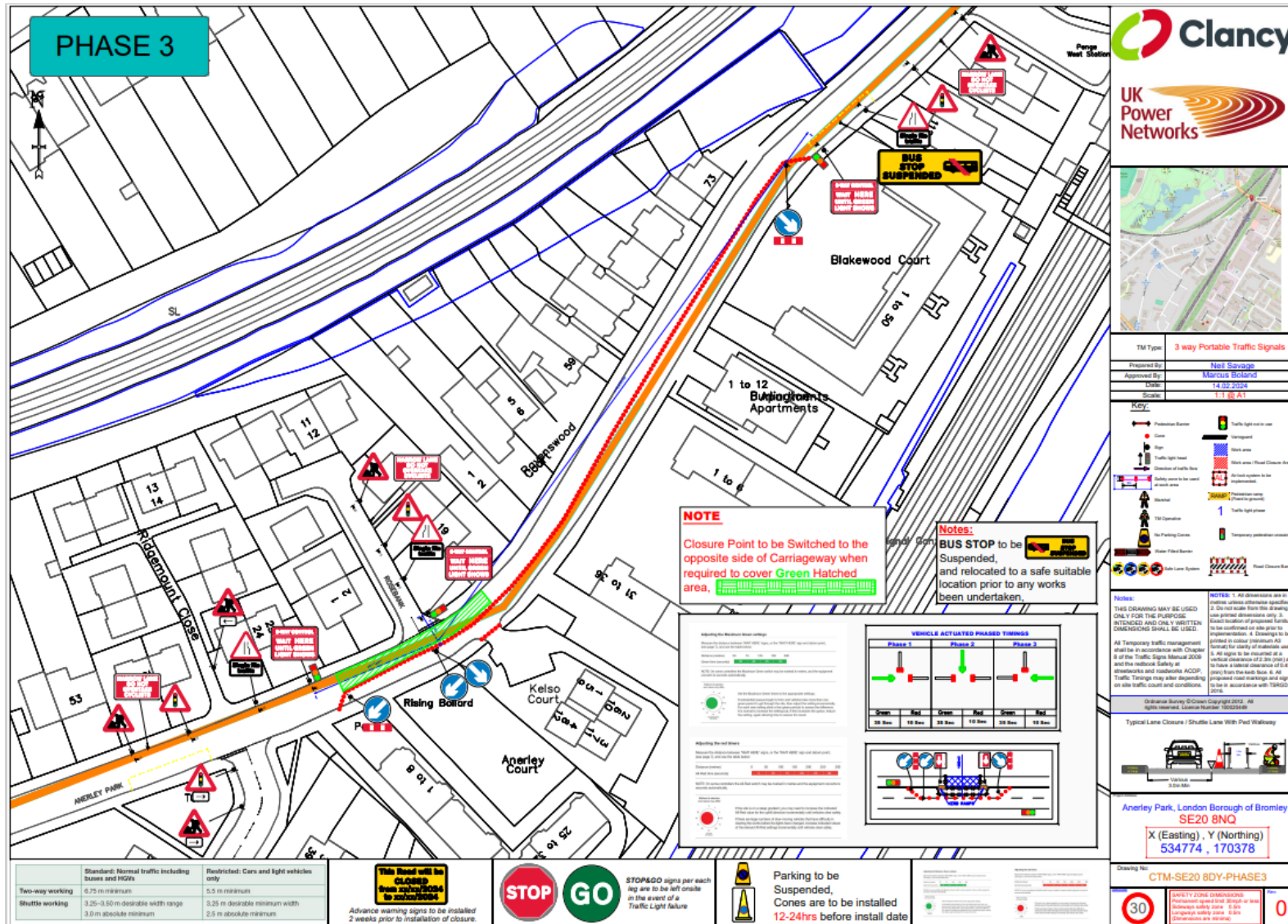
Permit dates
Start: 20.10.2025
Finish: 31.10.2025

3 way lights

[illegible]

3 way lights

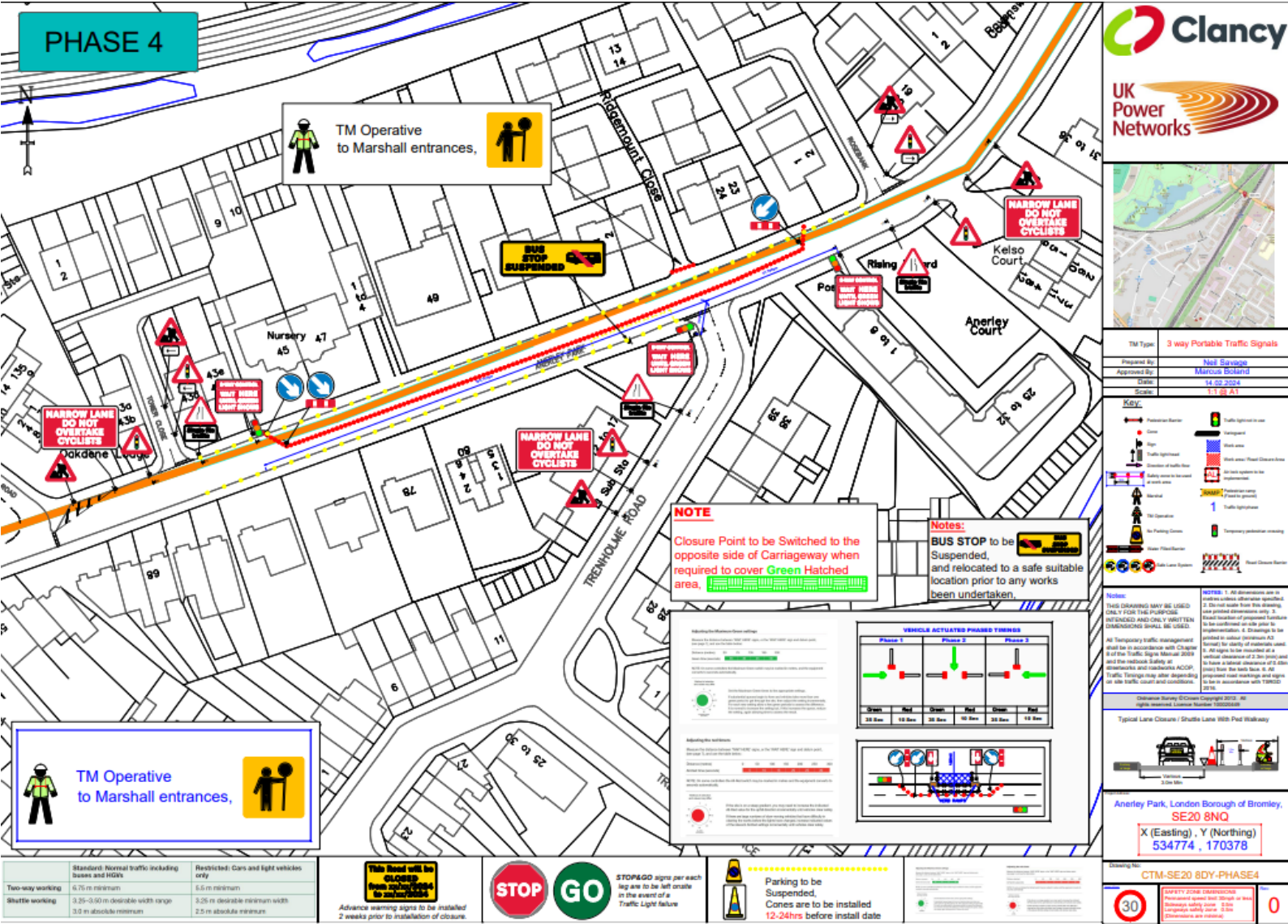
Anerley Park



Permit dates
Start: 15.08.2025
Finish: 20.03.2026

3 way lights

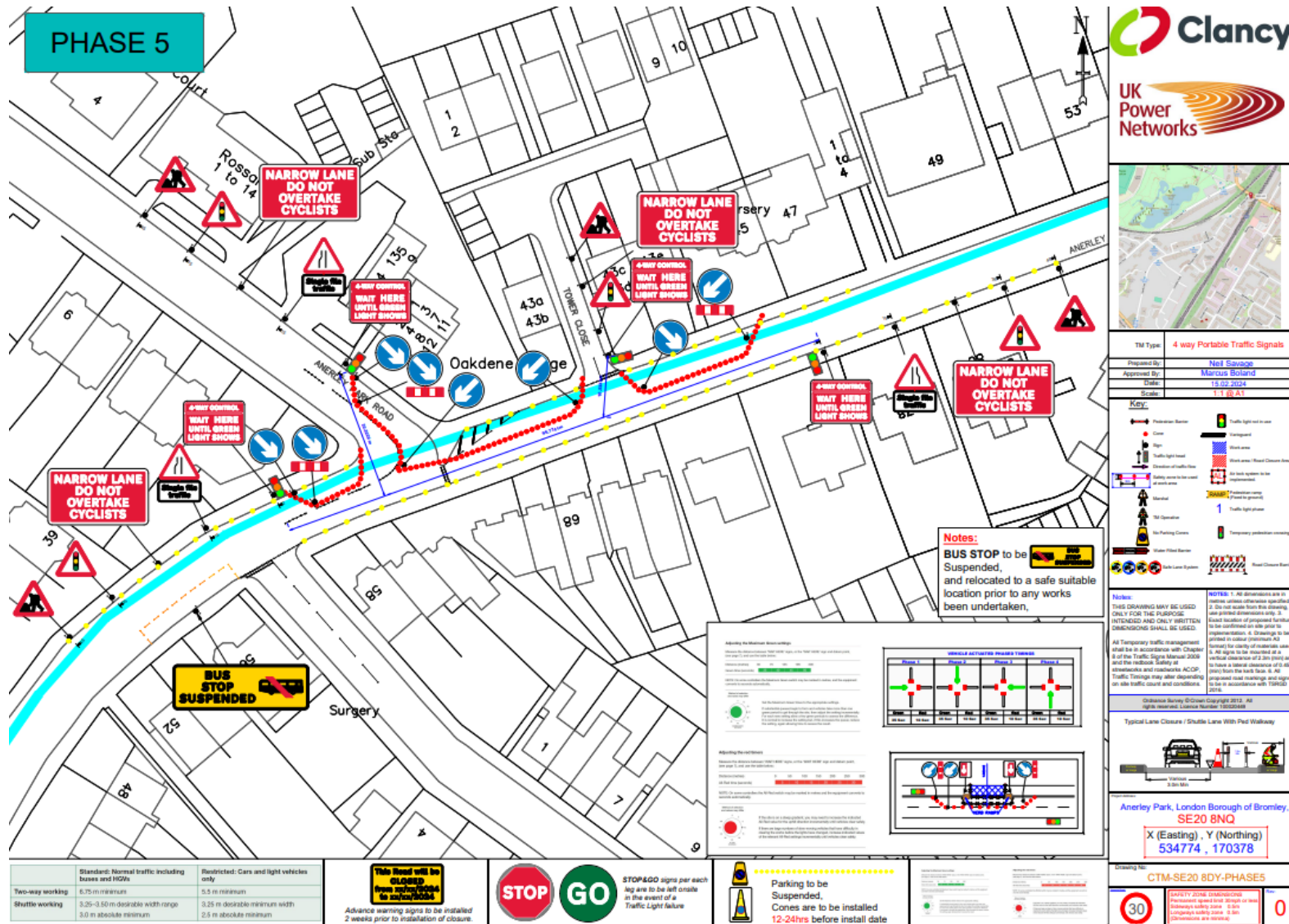
Anerley Park



Permit dates
Start: 15.08.2025
Finish: 20.03.2026

3 way lights

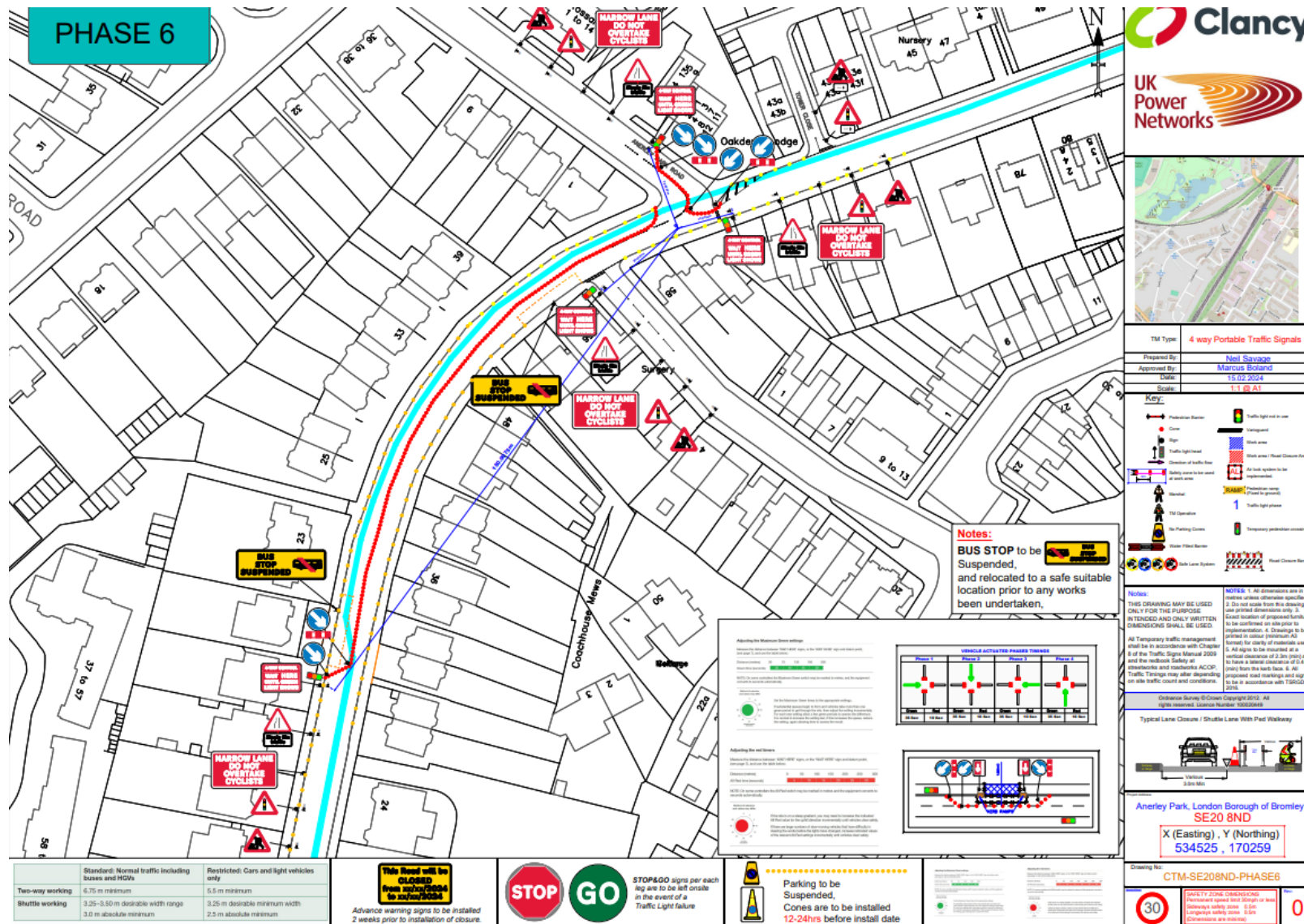
Anerley Park



Permit dates
Start: 15.08.2025
Finish: 20.03.2026

4 way lights

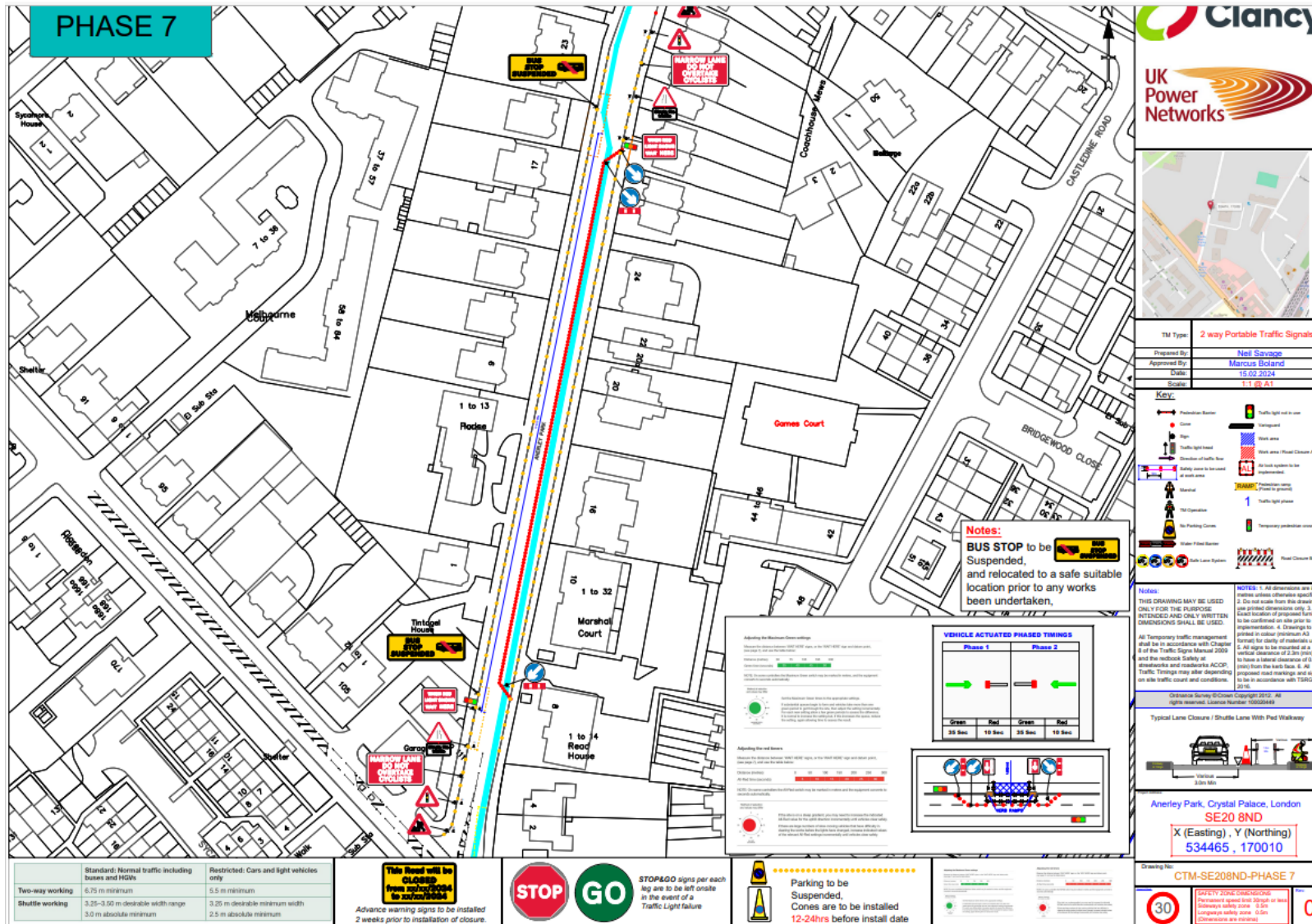
Anerley Park



Permit dates
Start: 15.08.2025
Finish: 20.03.2026

4 way lights

Anerley Park



Permit dates
Start: 15.08.2025
Finish: 20.03.2026

2 way lights