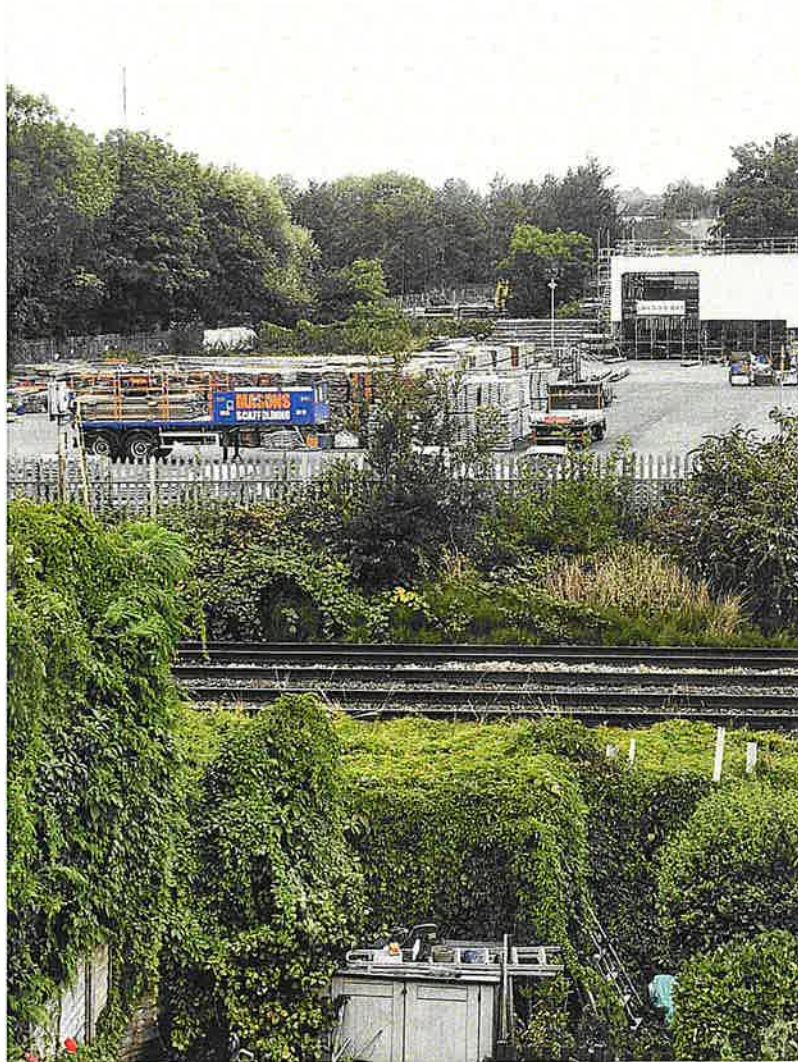
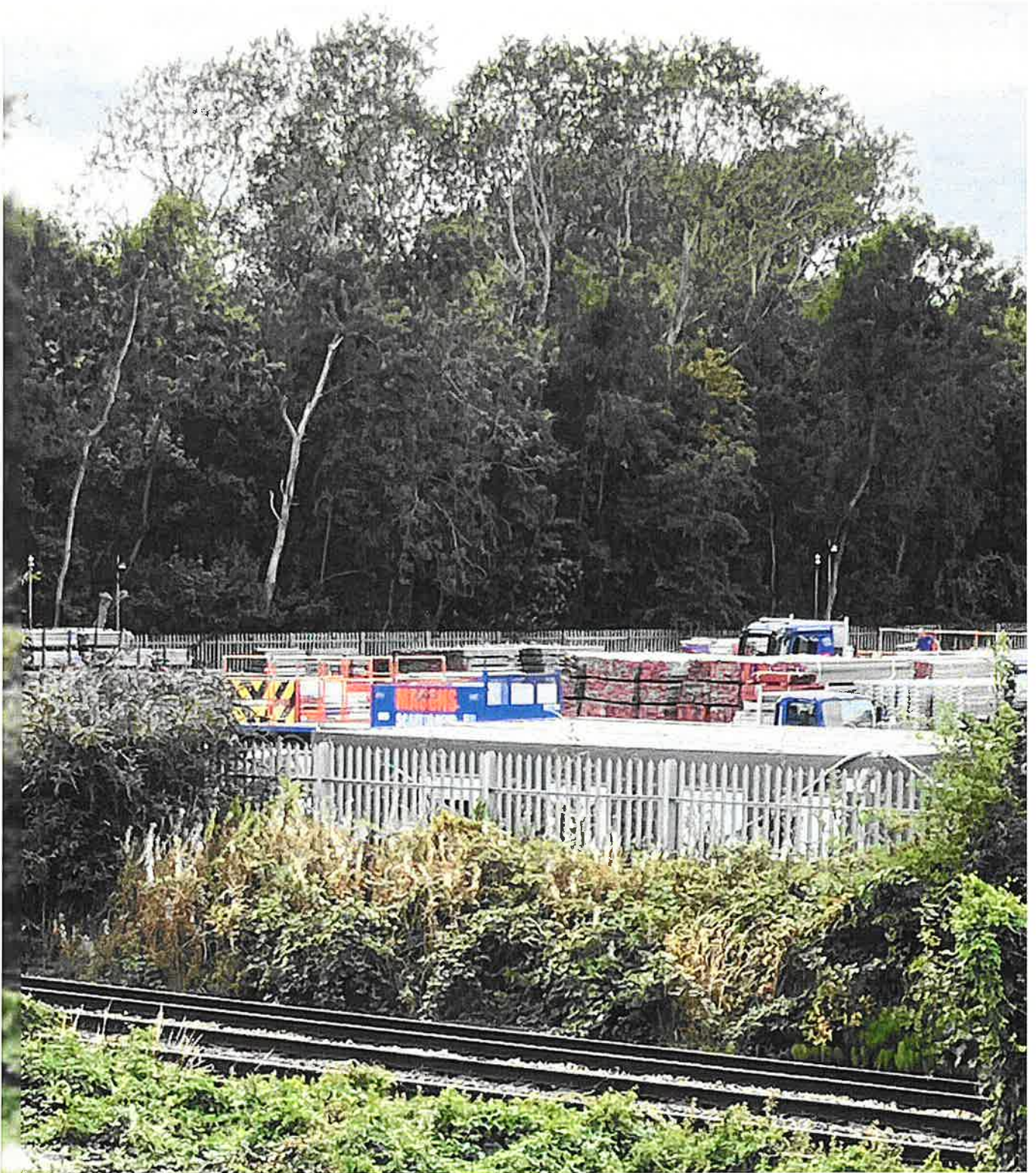
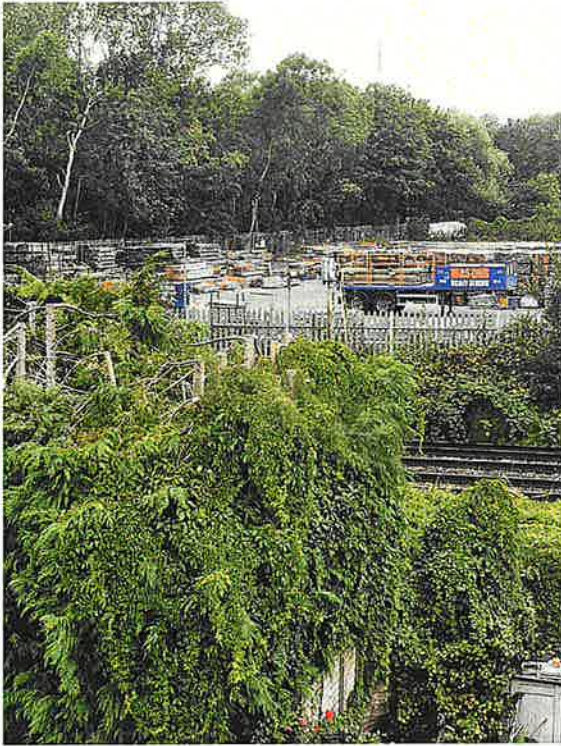


Mason's Scaffolding Yard - View from houses in Clockhouse Road









*Photographs taken from various back windows of properties in Clockhouse Road in August 2025, showing clearly the extent of the industrial impact of the scaffolding operation at the site which is unsightly and disturbs the once peace and quiet of a residential area.

Statement from elderly lady, who lives in Clockhouse Road. Her garden backs onto the railway line, directly behind the land being used by Mason's Scaffolding. She is recovering from an operation and so cannot be here today:

I have been living in Clockhouse Road for over 58 years and there has never been industrial use on the site which is at the back of my garden, across the railway.

They started by cutting down trees and clearing on a part of the site that had been overgrown for many years. Now it is a massive storage area for the poles and planks. There is constant noise - banging and clanking of metal pipes, which I imagine are being thrown around...

If a house was having building work done then there would a beginning and an end to the project but this goes on and on. It should not have been allowed and destroys the peace and quiet of my garden.

Statement taken by Lesley Ubee 7/8/2025