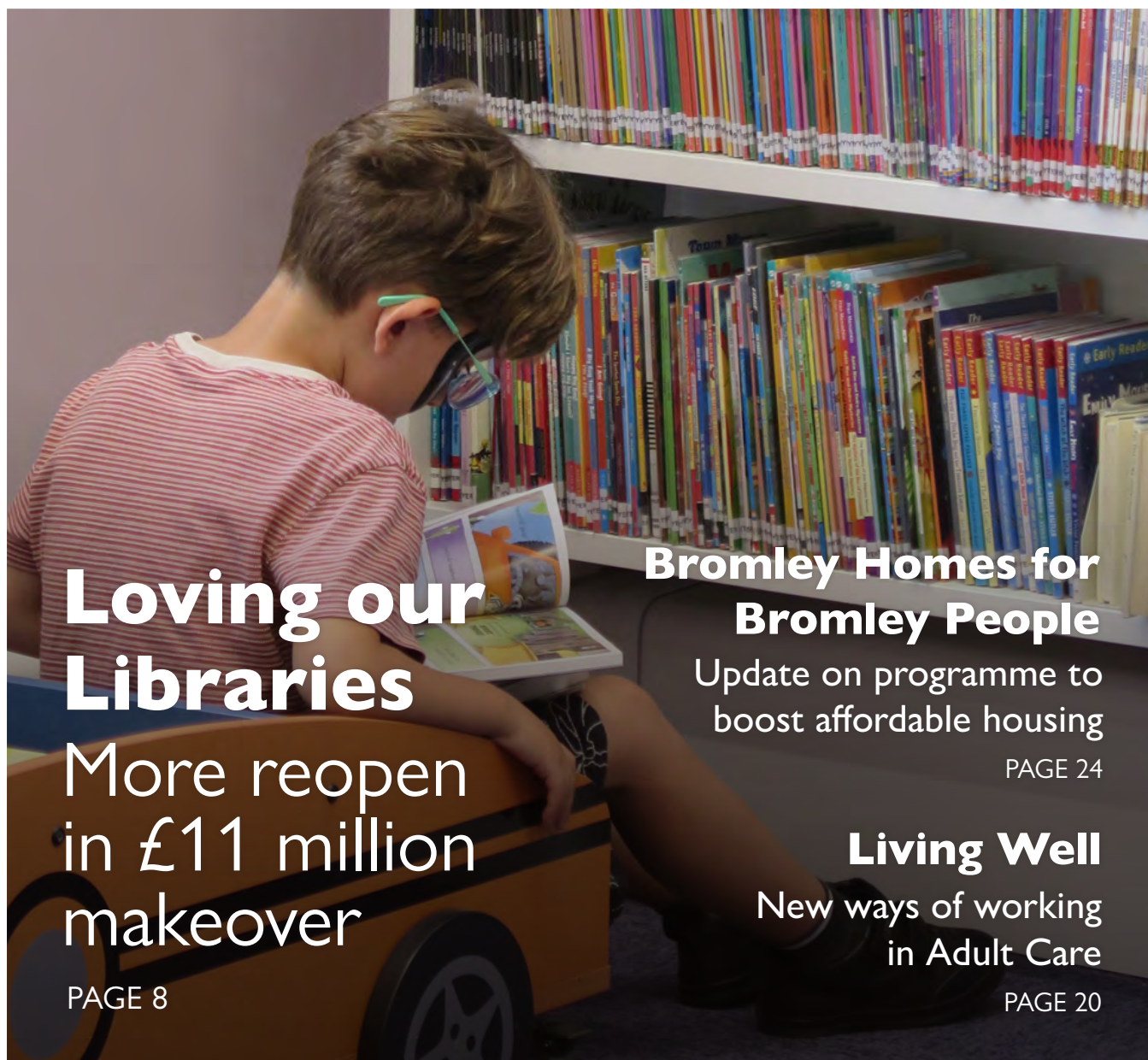


# OUR **Bromley**

LONDON'S BEST BOROUGH

DECEMBER 2025 | ISSUE 8



## **Loving our Libraries**

More reopen  
in £11 million  
makeover

PAGE 8

## **Bromley Homes for Bromley People**

Update on programme to  
boost affordable housing

PAGE 24

## **Living Well**

New ways of working  
in Adult Care

PAGE 20

## **Environment Matters**

WEEK 2

with your recycling and  
waste calendar PAGE 15

**Fostering  
open days and  
meet a carer  
pop-in sessions  
in your local  
area. No booking  
needed!**

**Find out where:  
[bromley.gov.uk/fostering](http://bromley.gov.uk/fostering)**

# Foster with Bromley **THE RUN**

a short film

From the wrong path  to the right track



# Contents

**5**  
**News Round-up**  
Latest updates



**8**  
**One for the Books!**  
Latest on £multi-million library refurbishments



**13**  
**Parks Projects**  
More Park improvements

**15**  
**Environment Matters**  
Including your recycling and waste calendar



**19**  
**Shaping Up**  
New £22m Leisure Centre



**20**  
**Magic Moments**  
Technological advances in Adult Care

**23**  
**Who Cares?**  
Always room for more Foster Carers

**24**  
**Bromley Homes for Bromley People**  
More affordable homes built around the Borough

**26**  
**Funding Reduction Expected as Service Demand Rises**  
Council Budget Challenges



**29**  
**Make Healthy Decisions**  
How to tell if online information is reliable



**30**  
**Spotlight on Apprenticeships**  
Opportunities to learn while you earn



## Dear Resident,

Another year passes and I am proud to reflect on our achievements.

With the Beckenham, Burnt Ash, Chislehurst, Mottingham and West Wickham library upgrades all now completed, works at the Walnuts and West Wickham Leisure centres firmly underway and the future of The Churchill Theatre recently secured, it's been a good year.

As well of course, further progress being made in our Bromley Homes for Bromley People programme, which continues to deliver much-needed affordable housing on underused council land, helping save on nightly-paid accommodation.

We also hope to shortly confirm huge savings for Council Tax Payers, courtesy of the Council's national leading expertise and operation of our pension scheme.

Sadly though, despite shaving another £18m off our costs, Bromley still faces a £56m budget gap next year. It seems utterly incredulous that the Government's 'fair' funding review now looks set to cut Bromley's funding even further still, given the extent of the handicap we are already suffering from, compared to others. Time will tell with details to follow, but, as I have been warning for some time, many local authorities now face a real cliff edge as costs and service demand continue to rise to completely unsustainable levels.

On a happier note, I wish every single one of you a truly wonderful Christmas break with family and friends. If you can, do please just keep an eye out for those not quite so fortunate or a little bit lonely as well. Even a small word could help to make their Christmas too.

**With kindest Season's Greetings**

**Cllr Colin P. Smith**  
Bromley Council Leader

**Follow us at:** /lbbromley @LBofBromley /LBBromley

© Our Bromley Magazine is produced by the London Borough of Bromley, Churchill Court, 2 Westmoreland Road, Bromley BR1 1AS.  
For advertising and feedback visit: [www.bromley.gov.uk/OurBromleyMagazine](http://www.bromley.gov.uk/OurBromleyMagazine)





**Bromley  
Lettings**

# Landlords...

Do you want a generous cash incentive and stress-free lettings?

**Bromley Council's lettings service takes the stress out of finding you tenants while saving you money.**

We are looking for properties in Bromley as well as across London and surrounding areas.

We have a range of attractive lettings services tailored to your needs. Let your property through us and you'll receive a cash incentive alongside access to a range of other benefits.\*

## **Benefits include:**

- free support throughout the duration of the tenancy from highly experienced staff
- no fees
- free photographic inventory
- free tenancy agreement

\*Subject to terms and conditions

**To find out more contact our dedicated lettings team:  
t: 07738 752 580 e: [landlords@bromley.gov.uk](mailto:landlords@bromley.gov.uk)**





# News Round-up

The latest on our Borough - find out more at [www.bromley.gov.uk/news](http://www.bromley.gov.uk/news)  
You can sign up for the Our Bromley newsletter - straight to your email inbox

## Shop Local

Mulled wine, festive food, street performers, rides and Christmas lights – the Bromley Christmas Market has it all! Just the thing to get you in the mood for the big day. The festive market blends with the colourful Charter Market on Bromley High

Street from 11 to 24 December. The Charter Market has a history stretching back to 1205 when King John granted the market's Charter. There's something to delight everyone and a great place for those last-minute gifts.

[www.bromley.gov.uk/markets](http://www.bromley.gov.uk/markets)

## Opening Hours and Parking

**Civic Centre** – Reception desk is open 9am to 5pm Mon to Fri except Christmas Day, Thurs 25 Dec, Boxing Day, Fri 26 Dec, Thurs 1 Jan and Fri 2 Jan 2026.

### Reuse and Recycling Centre –

Churchfields Road - Open every day except Christmas Day, Thurs 25 Dec, Boxing Day, Fri 26 Dec, Thurs 1 Jan 2026.

**Remember to book for the Churchfields Road site with Waldo Road remaining closed for a major upgrade, except for the weekends from the end of January when Waldo Road will reopen for a limited range of bulky items. Entry will be from Baths Road and booking is essential. More information [www.bromley.gov.uk](http://www.bromley.gov.uk)**

## Parking

DATE	PARKING, BUS LANE AND MOVING TRAFFIC RESTRICTIONS	ON-STREET PAID FOR PARKING BAYS	ON-STREET PERMIT BAYS	ALL COUNCIL OPERATED CAR PARKS
<b>Christmas Day</b> Thurs 25 Dec 2025	Please park considerably and drive safely	Free	Free	Free
<b>Boxing Day</b> Fri 26 Dec 2025	Normal Friday restrictions apply	Free	Normal Friday restrictions apply	Charges apply
<b>New Year's Day</b> Thurs 1 Jan 2026	Normal Thursday restrictions apply	Free	Normal Thursday restrictions apply	Charges apply

## Around the Borough

### Orpington Market

Town Centre - Tuesday, Friday and Saturday

[www.thewalnutsshopppingcentre.com](http://www.thewalnutsshopppingcentre.com)

### Penge Maple Road Market SE20

SE20 - last Saturday of the month

[www.mapleroadmarket.co.uk](http://www.mapleroadmarket.co.uk)

### Chislehurst Farmers' Market

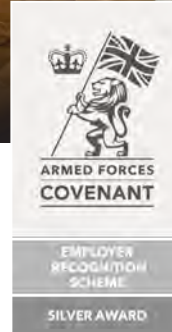
Third Sunday of the month 10am – 2pm

[www.myfarmersmarket.co.uk/chislehurst](http://www.myfarmersmarket.co.uk/chislehurst)





Left to right: Air Vice Marshal Randal Munro CB CBE TD VR DL ADC; Councillor Mike Botting, Bromley's Armed Forces Champion; Charlotte Ryan, representing Bromley's officer Armed Forces Champion; Captain Paul Hill, and Major Tom Hallett



## Armed Forces Recognised

Bromley is one of only seven London authorities to be awarded a Silver Award in the Ministry of Defence's Employer Recognition Scheme for championing veterans and the armed forces community. There are more veterans living in Bromley than any other borough, with dedicated Army Cadet, Air Training and Sea Cadet Corps also active across Bromley. This prestigious award recognises exceptional levels of support to veterans, service personnel and their families including sharing information and employment best practice to assist the armed forces community. Further enhancements will support future Gold recognition, building on the re-signing of the Armed Forces Covenant in 2023. [www.bromley.gov.uk/ArmedForces](http://www.bromley.gov.uk/ArmedForces)



## Leaf Clearance

More than 2,000 tonnes of leaves have been cleared from streets by Bromley's partner, Veolia. Teams work hard to keep pavements clear, but the leaf fall goes on for several weeks. If you're clearing up, please don't sweep leaves into road gullies as this can cause blockages. Use a green garden wheelie bin, annual fee £80, take them to a reuse or recycling centre or compost them.

## Roman Refurbishment

Visitors to Crofton Roman Villa will marvel at the 1,800-year-old historical site brought to life using a £250,000 award from the National Lottery Heritage Fund. New informative, interactive displays will expand on the current history told at the ancient site through interpretation panels, wall murals, window graphics and a handling collection. The site is the only Roman villa open to the public in Greater London. [www.bromley.gov.uk/croftonromanvilla](http://www.bromley.gov.uk/croftonromanvilla)

## Building a Bridge

A pedestrian bridge in Kelsey Park, one of Bromley's most loved open spaces, is being replaced. Situated at the south end of the park, the bridge has been closed for some time with a structural report confirming it is at the end of its life and unsafe. To follow progress on the new bridge, sign up at [www.bromley.gov.uk/kelseyparkbridge](http://www.bromley.gov.uk/kelseyparkbridge)



## Avoid Dangerous Counterfeits

Trading Standards is asking residents to think about what's under their tree. Counterfeit toys such as popular Labubu dolls can pose serious safety risks, especially to children. If the price seems too good to be true, then you may have a fake that could pose a choking hazard through such things as loose small parts. Report concerns to Trading Standards [tradingstandards@bromley.gov.uk](mailto:tradingstandards@bromley.gov.uk)

## Equipment Provider Change

New partners Inspire Community Trust are now providing essential health and social care equipment across the Borough following NRS Healthcare winding up their business. The Council acted swiftly to secure this partnership to ensure current service levels are maintained for residents now and into the future. Contact Inspire on 01322 520 560 or email [Bromley@inspiremedicare.org](mailto:Bromley@inspiremedicare.org)



## All things Dinosauria

Crystal Palace Park's iconic dinosaurs and Italian Terraces are getting a major restoration as part of the extensive park-wide regeneration delivered by Bromley Council and Crystal Palace Park Trust and partners, supported by £5 million from The National

Lottery Heritage Fund. The magnificent 'terrible lizards', inaccurate by modern day standards, have enthralled visitors since Victorian times. The new future for the park honours Sir Joseph Paxton's original vision, with the bust of the Victorian designer of the Crystal Palace being restored and relocated to a central spot in the park.

## New Approach

Welcome noise reduction is on the cards for residents under the Biggin Hill Airport flightpath, as a trial for a new approach to Runway 03 gets under way. The Civil Aviation Authority gave the green light for the Airport's trial to start in November. It will substantially reduce overflying of residential areas to the north of the airport when runway 03 is in operation. The Airport is looking to make the approach permanent with the Council ready to support where possible.

[www.bromley.gov.uk/BigginHillAirportUpdate](http://www.bromley.gov.uk/BigginHillAirportUpdate)

## Young Dreams

Young people in Bromley are supported by Bromley's Youth Justice and Youth Services team to achieve their potential through initiatives such as the annual Jack Petchey Awards which acknowledge personal triumphs, overcoming challenges, and excelling academically or in sport. The service also held a recent conference for young people finding mainstream education challenging for a variety of reasons. Inspirational speakers and interactive sessions provided creative learning to encourage attendees to think about their future aspirations and how they might achieve these.

[www.bromley.gov.uk/young-bromley/youth-service](http://www.bromley.gov.uk/young-bromley/youth-service)



## Illicit and Illegal Goods Seized

Illicit tobacco products and illegal food were seized following raids on retail premises in Bromley, Penge and Orpington. The Council's Trading Standards operation, with support from their Londonwide counterparts and the Police, took suspected counterfeit tobacco products and vapes, believed to be smuggled, off the market by seizing them. The Council's Food Safety Team also seized foods not conforming with national food safety regulations, with detailed examinations now being undertaken. The locations of the retail premises and the exact details of the seizures are not being disclosed at this time as investigations are continuing but the amounts seized are significant and estimated to be worth in excess of £10,000. Other enforcement action is at [www.bromley.gov.uk/Prosecutions](http://www.bromley.gov.uk/Prosecutions)



Chislehurst Library reopens as part of Bromley's £11 million library transformation

**C**hislehurst Library has officially reopened its doors, becoming the fifth library to welcome back visitors as part of Bromley Council's ambitious £11 million investment to modernise libraries across the Borough. The excitement was palpable, with crowds gathering to celebrate the occasion and more than 60 new members

signing up on the spot. In its first week alone, the library saw nearly 2,000 visits—proof that libraries remain cherished spaces for readers, learners, and community members alike. But today's libraries offer more than just books. They're vibrant, inclusive hubs where people of all ages can relax, connect, and take part in a wide range of activities.





## A Space for Everyone

Children were captivated during story time led by celebrated author Cerrie Burnell, formerly of CBeebies, in a newly redecorated children's area featuring a bright mural inspired by Chislehurst. Meanwhile, the local knitting group Knit & Knot returned to their familiar spot, now enhanced with improved facilities and a welcoming atmosphere.

The refurbishment includes a new roof, windows, and heating system, alongside the addition of an accessible public toilet—ensuring the library is welcoming and comfortable for all. The official reopening was led by the Mayor of Bromley, Councillor Jonathan Andrews, who was proud to invite residents to look around.

## Creativity all around

Talented artist Alice Pattullo created the eye-catching murals for Bromley's improved Libraries

Alice, known for her beautifully composed prints and colourful and quirky illustrations was commissioned to create murals that showcase and celebrate the local history of each library location.

"I was brought up surrounded by books, and encouraged to read from a very young age, so my first exposure to illustration will have been through picture books - many borrowed from my own local library," said Alice. "I had a creative

upbringing which I think inevitably led me on my own creative path, where I graduated in Illustration and now work as an illustrator as well as producing my own prints alongside commissioned work. I still read a lot today, and research is often at the heart of my work.

"The project with Bromley Council has been a delight. It has been great fun getting to know the Borough and researching the history, stories, and landmarks related to each area and to create these largescale designs to sit in the libraries. I hope they bring a bit of fun, intrigue and colour to each space."



**"Rapid progress is being made delivering these improvements and repairs across our much-loved library network. By making this investment now, we can reduce future maintenance costs, while ensuring our libraries are equipped for years to come to deliver the high-quality services that residents deserve."**

Councillor Yvonne Bear, Executive Councillor for Renewal, Recreation and Housing



Barbara with Bromley's Mayor and consort with some of the regulars at Chislehurst Library's Knit and Knot Group

## Bromley's Libraries – serving the community

### Tight-knit Group

Barbara has the kind of welcoming personality that feels like a warm hug when you meet her. She's been a library assistant for more than six years and the inspiration behind Chislehurst Library's 'Knit and Knot' group. A dozen or so residents meet weekly to share time over individual creative projects, benefitting from each other's company, creative knowledge and Barbara's support.

"I've always been a knitter," says Maria, a regular. "I've been coming here every time for two years."

**"Sometimes we do our own projects, or we can take up Barbara's challenge. Recently she had us knitting mice – hundreds of them – all for charity!"**

Sue has been knitting cannula covers for local hospitals - tiny sleeves to cover the intravenous tubes which help keep the babies alive. The sleeves prevent babies from getting scratched and offer comfort to parents. "But our latest project is knitting animals for the children at Marjorie McClure school down the road," she says. "We also like to make post box toppers that are fun to see around the town."

Debbie, who doesn't knit but enjoys cross-stitch, is also welcomed by the group. "I started coming when I was semi-retired and now, I have the time to really enjoy the companionship."

Margaret is a new 'recruit' who taught herself to crochet. "When you are on your own you need to get out," she advises. "I saw a leaflet a couple of weeks ago and I've been coming ever since."

### Brightening up your day

Beckenham Library Manager Tamsin says that their local group is active too. "Our Knit and Natter ladies are a lovely group and they bring a lot of happiness to local people with their toppers – we never know what they're going to come up with next!"

"Libraries provide many opportunities for everyone to socialise and learn new skills which is especially important for those who might otherwise be all alone. All our libraries across the Borough offer community activities such as knitting, coffee mornings and reading groups."





**Also  
Coming Soon**  
Orpington and  
Mottingham Libraries  
will reopen before  
Christmas following  
refurbishment.



# New Central Library for 2026

The newly relocated Central Library in the heart of Bromley Town Centre will not only rehouse provisions currently available in the existing library, but also deliver improvements including a larger children's library, accessible toilets, attractive modern study areas and new lifts. Bromley's friendly library team can't wait to welcome you.

## The ground floor:

Informal study and meeting areas; active and quiet spaces; popular fiction and non-fiction book section; an expanded children's library including a space for storytelling; public toilets accessible for all including 'changing places'.

## The first floor:

Modern space for study with IT facilities; an enhanced local history centre; reference library; the fiction and non-fiction library book section; newspapers and periodicals; private meeting rooms reached by lifts and stairs, as well as special events space,

linked to the ground floor, and accessible toilets.

The existing library next to Churchill Theatre remains open while work is under way.

## Design steered by you

Thank you for all who provided feedback in the early stages to help guide the designs for the new library. More than 1,500 responses provided valuable feedback from library users and non-users, staff, schools and others.

**Libraries are for everyone—places of enrichment and learning, as well as community spaces to meet, discover, and connect. In times of loneliness, they serve as lifelines, offering warm, safe surroundings and a sense of belonging.**

## What's On Across Bromley Libraries

From baby sessions to coffee mornings, Bromley's libraries offer something for everyone. Here's a snapshot of the regulars in our already refurbished libraries:

- Burnt Ash – Baby sessions, Lego club, Knit & Needle group
- Beckenham – Reading group, Knit & Natter; childrens activities
- Southborough – Coffee mornings, Lego club, baby sessions
- St Paul's Cray – Community Support Centre, impartial advice, coffee mornings
- West Wickham – Café, Tea Club, Toddler Tunes, Makerspace, room hire



**Watch out for special festive season events in libraries too!**



# Homes for Ukraine

Supporting our neighbours fleeing from war



- The Ukraine war started on 24 February 2022.
- Since the Homes for Ukraine Scheme launched on 14 March 2022, Bromley has welcomed **1044** Ukrainian guests across **461** residents who have opened their homes.



To find out more about Bromley's Homes For Ukraine Scheme and how you can support those fleeing from war:

Scan the QR code or call our team on 020 8313 4698  
or email [ukrainesupport@bromley.gov.uk](mailto:ukrainesupport@bromley.gov.uk)



# Parks Projects

More beneficiaries from the Council's £1million Platinum Jubilee Parks Fund

## Hoblingwell Wood Recreation Ground

Play equipment was replaced and a biodiversity bed and bee post established thanks in part to a £74k grant from the Veolia Environmental Trust. Plans for the accessible roundabout, replacement swings, inclusive cradle swing and a climbing boulder were shaped by a consultation led by Friends of the Park who also achieved a further £20,000 of National Lottery money.



## Chislehurst Cemetery

A Baby Loss Memorial Garden was created at Chislehurst Cemetery to give parents who have lost babies prior to 24 weeks of pregnancy a focus for their remembrance. It was awarded £15K and was supported by the National Lottery and The Chislehurst Society. The garden was opened by Deputy Mayor Councillor Gemma Turrell.



## Kings Road Recreation Ground

Biggin Hill Business Association applied for £20K to make play and fitness improvements to the site including upgrades to the playground equipment and the introduction of a new trim trail.



## Norman Park Playground

Hope Church received just under £18,000 for their playground project. Improvements included utilising a vacant area of safety surfacing with the introduction of wooden trim trail equipment and 3D wetpour animals. Funds were bolstered by a crowdfunding campaign and a generous donation from Bromley business Thamer Ltd.

## Coney Hall Recreation Ground

Phase two was delivered this summer with the upgrading of a multi-use games area adjacent to the pavilion, providing a secure environment for basketball, football and other ball games. Friends of Coney Hall Parks fundraising efforts made this project possible.

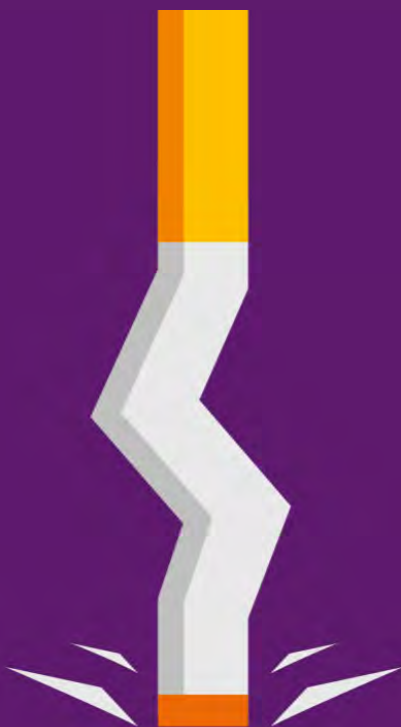


## Churchfields Recreation Ground

The Recreation Ground has undergone an exciting transformation thanks to the dedication of the newly reformed Friends of Churchfields group. An award of £37K was bolstered by generous donations from UKPN, local businesses, the KTR Fund and Citygate Church. Improvements include playground equipment upgrades and a new gym frame adjacent to the multi-use games area.



Project information is on the Council's website, but applications are now closed. Thank you to everyone who put forward a project and to all those who donated funds and time to bring them into fruition. [www.bromley.gov.uk/jubileeparksfund](http://www.bromley.gov.uk/jubileeparksfund)



# Do you want to Quit Smoking?

## We can help

### Call **0808 281 5933** or **drop in**



**CGL Bromley,  
Regency House, Farwig  
Lane:**

- **10:00-17:00 Mon to Fri**
- **Tuesday evenings  
available**

**One Bromley Wellbeing  
Hub, Upper Mall, The  
Glades:**

- **11:00-16:00 on Saturdays**

**Free nicotine products and behavioural support for  
anyone who smokes tobacco and lives in Bromley, or  
whose GP or school is in Bromley.**



**Smoke  
Free**  
Bromley



In partnership with



Week two

WINTER 2025

# Environment Matters

even more than ever



## Thank you, Bromley! We are recycling more than ever.

Bromley is the top recycling borough in London, thanks to residents' efforts. According to Defra, in 2023/24, Bromley recycled over half of the waste produced, sending virtually none to landfill. This is a great achievement, and we can recycle even more! Food waste recycling is an easy way to reduce your waste, and can be turned into fertiliser and green energy. Using our weekly collections, residents can recycle cooked and uncooked food, eggshells, coffee grounds, tea bags, fruit peelings and more.

Visit [bromley.gov.uk/foodwaste](https://bromley.gov.uk/foodwaste) to order your free containers today.

## Welcome

One of the reasons our borough is a brilliant place is because of you! It is no accident that Bromley is a high performing recycling borough, London leading in fact! We are rightly proud of this outstanding performance over many years, with our recycling record also as a direct result of residents' recycling efforts too. Please keep going with this, as there are clear financial and environmental benefits. Working together is key to so much of what we do. As a Council, this includes working with Street Friends, Friends of Parks, Tree Friends and Snow Friends - thank you for your support and reports when you see something which needs attention.

You may be interested to know that as part of our plans to ensure our waste collection services continue to be reliable, we will soon be trialling an electric vehicle. More detail will follow but the trial will help us see how an electric vehicle performs in London's largest borough, with potential operational savings from fuel, ahead of any decision about the wider fleet of waste vehicles.

I am also pleased to share early news that whilst our Waldo Road Reuse and Recycling Centre remains closed, we are planning to reopen on a limited basis, at weekends at the end of January, whilst work to complete the upgrade of the infrastructure at the site continues.

Details of when residents will be able to book appointments to visit will be made available in due course.

Please make a note of the revised collection schedule over the festive period and Happy Christmas.

**Councillor Will Rowlands**  
Executive Councillor for Environment



## Leaf removal is still on!

As autumn progresses, our street cleaning operatives continue to work hard, removing around 2,000 tonnes of leaves from pavements and roads every year! Additional staff have been deployed to ensure leaves from over 36,000 trees are removed quickly to ensure roads and pavements remain clean and safe. We prioritise leaf clearance on streets with the highest concentration of trees, ensuring our resources are deployed where they are needed most. Our removal schedule is coordinated with the seasonal leaf-fall patterns of different tree species to increase efficiency and maintain clean streets. The final leaves will continue to be cleared in the coming weeks.





## Meet Monica and Dave, two of your "Street Friends"!

Street Friends are volunteers who go above and beyond to help keep the community clean and safe. Monica and Dave have been Street Friends for over a decade. You might have seen them featured on one of our recycling and waste collection vehicles! Over the years, Monica and Dave, along with lots of neighbours and friends, meet up monthly to litter-pick and socialise. Being a Street Friend is a great way to meet people, stay active and keep your local community clean. If you want to become a Street Friend, please visit [bromley.gov.uk/streetfriends](http://bromley.gov.uk/streetfriends)



## Snow Friends

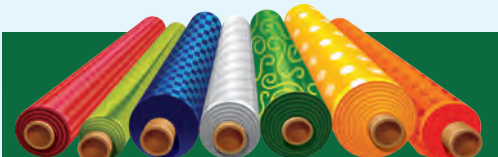
Bromley, London's largest borough, has around 500 miles (800km) of roads and 870 miles (1400kms) of pavement, and whilst we are prepared for snow each winter, it is not feasible for crews to remove snow from everywhere; in fact, after repeated heavy snowfalls we are stretched to treat key locations, and this is where Snow Friends comes in. Over the years, our many Snow Friends have proved themselves invaluable with removing snow from pavements and roads in smaller residential streets, using snow scoops and salt supplied, free of charge, subject to availability. This allows council crews to concentrate on critical main routes and more heavily used pavements in town centres, outside schools and at transport interchanges.

If you'd like to make your neighbourhood safer this winter, please register at [www.bromley.gov.uk/SnowFriends](http://www.bromley.gov.uk/SnowFriends) to join an existing Snow Friends group, or find out how you can start a group for your street or community group if there isn't one already.



## Gum removal

One of the most common types of litter is chewing gum. Using hot water and jet-washing machines, operatives remove gum from busy pavements such as Bromley High Street.



## Can we recycle wrapping paper?

Say 'no' to glossy or metallic wrapping paper as they cannot be recycled.

# Your waste is your responsibility!

Together, we can stop fly-tipping in our borough.

- 1 If you need to dispose of unwanted items:
  - Visit Churchfields Road Reuse and Recycling Centre
  - Book a "Bulky Items" collection service. Please visit [bromley.gov.uk/bulkyitems](http://bromley.gov.uk/bulkyitems)
  - Donate or sell
- 2 If you have seen a fly-tip in your local area, report it to us at [bromley.gov.uk/report](http://bromley.gov.uk/report)
- 3 If you witness a fly-tip in action, let us know at [bromley.gov.uk/envirocrime](http://bromley.gov.uk/envirocrime). If your information helps us successfully prosecute an offender, you could receive up to £500 as a reward.



# Tis the season to be green!

1

Gifting an experience? This is a great way to avoid excess wrapping paper!

2

Your collection days will change over the festive season. Check page 4 of this newsletter for more information.

3

Make a conscious effort to buy gifts and food with less packaging - you will create less waste and may save money.

4

Don't bin it - regift it! If you receive a gift that isn't right for you, don't throw it away. Donate or sell unwanted items.

5

If you are planning to spend more time in the garden next year, consider subscribing to our garden waste collection service. This also makes a great Christmas present for your green-fingered friends! For more details visit: [bromley.gov.uk/gardenwaste](https://bromley.gov.uk/gardenwaste)

6

If you're having your online Christmas gift shopping delivered, recycle the cardboard boxes in your black box. Don't forget to flatten them first to save space and help collection crews to collect it safely.

7

Use up your festive food - don't let your leftovers go to waste. Most foods can be frozen if the use-by date has not passed.



## Recycling Heroes

The Recycling Heroes programme invites all primary school students to learn about the 3 Rs Reduce, Reuse, Recycle. The programme is completely free. If your school is interested or would like to find out more visit [bromley.gov.uk/recyclingheroes](https://bromley.gov.uk/recyclingheroes)

## A to Z recycling list

Bromley's A to Z list gives information about what you can and cannot recycle from home. Please visit <https://www.bromley.gov.uk/RecyclingAtoZ>



## Do not leave bins on pavements

Please do not leave your recycling and waste containers on the pavement. This could block pedestrian access and may become a trip hazard.



## Waldo Road Reuse and Recycling Centre Update

Waldo Road Reuse and Recycling Centre remains closed whilst major infrastructure work continues. The improvement work will continue for some months to come, with residents reminded they can continue to use Churchfields Road Reuse and Recycling Centre during this period. Please remember to book your slot online before visiting. Plans to reopen the Waldo Reuse and Recycling Centre on a limited basis at weekends, from late January will be shared soon. For the latest updates, please visit [bromley.gov.uk/wasteneews](https://bromley.gov.uk/wasteneews)



# Collection Calendar

This is your new recycling and waste collection calendar. This calendar applies to collections from houses only - there are different arrangements for residents in flats. Please note the changes during bank holiday weeks where collections may take place later than usual.

**1**

All recycling and waste must be correctly presented for collection **by 7am on your collection day**.

**2**

All recycling and waste must be contained securely and placed within arm's reach of the pavement, **not on it**.

**3**

Leave your containers out for collection **until 5pm** before you report a missed collection.

## December 2025

Mon	Tue	Wed	Thur	Fri	Sat	Sun
1	2	3	4	5	6	7
8	9	10	11	12	13	14
15	16	17	18	19	20	21
22	23	24	25**	26***	27	28
29*	30*	31**				

## January 2026

Mon	Tue	Wed	Thur	Fri	Sat	Sun
			1**	2***	3	4
5*	6*	7*	8*	9*	10	11
12	13	14	15	16	17	18
19	20	21	22	23	24	25
26	27	28	29	30	31	

## February 2026

Mon	Tue	Wed	Thur	Fri	Sat	Sun
						1
2	3	4	5	6	7	8
9	10	11	12	13	14	15
16	17	18	19	20	21	22
23	24	25	26	27	28	

## March 2026

Mon	Tue	Wed	Thur	Fri	Sat	Sun
						1
2	3	4	5	6	7	8
9	10	11	12	13	14	15
16	17	18	19	20	21	22
23	24	25	26	27	28	29
30	31					

\*Collections are made one day later than usual.

\*\* Collections are made two days later than usual.

\*\*\* Collections are made three days later than usual



**Green week:**

Tins, cans, glass and plastic containers | Food waste



**White week:**

Non-recyclable refuse | Black box: paper and cardboard | Food waste

### Green Garden Waste subscribers:

If you are a Green Garden Waste subscriber, your bin will be collected on your usual collection day. Please remember to cut up your Christmas tree and place it in your garden waste bin.

## Christmas tree recycling sites

Temporary Green Garden Waste sites will open across the borough that will accept garden waste and Christmas trees.

### Saturday 10 January, 11am to 4pm

- Bromley: Norman Park, Hook Farm Road (off Bromley Common)
- Green Street Green: Salt Depot, Shire Lane Spur (off Sevenoaks Road)
- St Paul's Cray, Cotmandene Crescent car park

### Sunday 11 January, 8am to 12pm

- Biggin Hill: Charles Darwin School, Jail Lane
- Beckenham: Unicorn Primary School car park, Creswell Drive (off South Eden Park Road)

## Churchfields Road Reuse and Recycling Centre opening hours

**Monday to Friday - 7am to 5:30pm**

**Saturday - 7:30am to 4pm**

**Sunday - 8am to 1pm**

**The centre is closed on 25 and 26 December and 1 January.**

Please book your slot before visiting the site  
[bromley.gov.uk/recycling-sites](http://bromley.gov.uk/recycling-sites)

### Please remember:

1. Remove all decorations from your tree before you recycle it.
2. Christmas trees and garden waste can only be left at the locations during the times specified above. If you leave waste here before or after these times, it is fly-tipping and you could be prosecuted.



### Reuse corner!

You can take any unwanted items, in a good condition, to Churchfields Road Reuse and Recycling Centre. Please ask a member of staff when you arrive.



# Shaping up

West Wickham's new £22m Leisure Centre begins to take shape

**E**xciting progress is being made in West Wickham as construction begins on a brand new state-of-the-art £22million leisure centre that will transform local fitness and wellbeing facilities. The eagerly awaited facility promises something for everyone, with cutting-edge amenities designed to serve the whole community. A portion of the existing building - deemed beyond economic repair - has been demolished to make way for a modern rebuild, while refurbishment work continues on the remaining structure, including the popular learner pool.

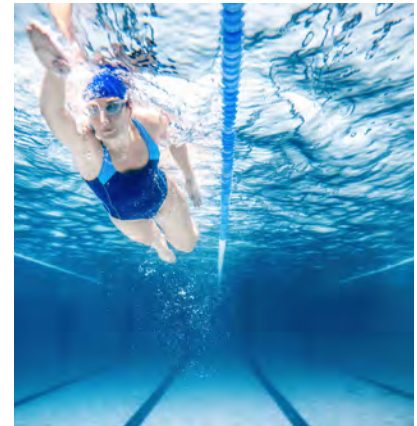
Although the centre's reopening has been rescheduled to early 2028, the revised plan will ensure greater long-term reliability and minimise future

maintenance costs.

Architecturally, the red brick exterior draws inspiration from the newly reopened West Wickham Library creating a cohesive look.

**“We can’t wait to welcome our local community back into the centre,”**

said Kelly Stead, Commercial Director at Mytime Active, the charitable trust that manages leisure facilities in the Borough on behalf of the Council.



## West Wickham Leisure Centre highlights

- a brand-new competition length swimming pool
- modern changing areas
- upgraded fitness facilities
- dedicated equipment to support active ageing
- wonderful soft play area for younger people
- smart reception area
- vibrant café for socialising

Keep up to date with progress  
[www.bromley-leisure.co.uk/work](http://www.bromley-leisure.co.uk/work)



**“We are in a fairly unique position among local authorities of being able to press ahead with a substantial investment in our leisure provision, and I know many residents will be excited to see progress on site as we secure this centre for many years to come.”**

Councillor Yvonne Bear, Executive Councillor for Renewal, Recreation and Housing



# Magic Moments

Talking with adults about ageing well and care at home just took a huge leap forward

**A**ccurate notes are crucial for residents to get the best out of their interactions with their social workers, but sometimes writing these down can get in the way of free-flowing conversations.

Residents are now benefitting from more attentive care assessments and reviews as new technology allows for secure recording of conversations and so lessens the need for manual note taking.

New 'Magic Notes' technology, rolled out to most social workers in Bromley, not only provides an accurate recording of any discussions but also generates a written report simultaneously. This means time saved writing and transcribing notes, but - even more significant for residents - social workers can now give their absolute full attention to what is being said, rather than being concerned about writing things down at the same time.

The technology connects directly to the Council's secure reporting system, with recordings retained for only as long as are needed. Residents' approval will be sought for the use of the technology and evidence so far suggests that most people welcome conversations no longer punctuated with detailed note taking.

Once the system files a report generated by the recording, the social worker will ensure it accurately reflects the mood and tone of the original meeting. The technology can then produce additional documents by interrogating the original to produce letters or a list of actions points, for instance, ensuring accuracy and that nothing is missed.



“I’m encouraging feedback from our teams so I can see how it’s going and make any adjustments to the way we work but remember you, our residents, are always in control and we’ll explain what we are doing every step of the way. I firmly believe that not only will this new technology make a difference to the workloads of our teams, but residents will benefit too from undivided attention during discussions.”

Donna Glover,  
Director of Adult Services.

Together we  
*thrive.*

**Adult Social Care**

### **A helpful tool that frees up time to listen closely to residents’ needs**

“Magic notes is just one of the new and important technological tools for practitioners as we slowly modernise our interactions with residents. “Magic Notes allows us to capture a conversation and feed it straight into our recording system. It won’t be perfect but with our skilled staff editing the draft sent by this helpful technological tool, it’s a really exciting development to cut down on the amount of time our teams spend doing administrative work. This frees up more time to focus on listening really closely to what people have to say about their lifestyle and how care fits in, without having to break off to take important notes.

**“I’m a social worker myself and I know that it’s great to be able to have really free-flowing conversations with our residents, not needing to take notes or be typing at the same time.”**



Technology is helping residents stay in their homes for longer too - see page 22 for more information on Intelligent Lilli.



**“Residents are always in the driving seat, but we are already seeing that they understand and appreciate how Magic Notes can improve the way social workers produce records, and that they benefit through uninterrupted conversations that flow better without the requirement of continually having to write things down.”**

Cllr Diane Smith, Executive Councillor for Adult Care and Health



# Moving Testimony

Measuring movement without the need for cameras – that's Intelligent Lilli

**G**round-breaking Intelligent

Lilli technology can help people stay independent in their own homes for longer and also help to identify where more physical care may be needed.

## Useful and not invasive

"It's useful and not invasive as no cameras are involved. There are just sensors, which can accurately monitor movement around the home," said Bromley resident Fikri on using

the technology when his mother's dementia meant she had become a little forgetful.

"The technology could detect when the front door had been opened and there was no one in the house meaning that my mother had gone out," said Fikri. "Because of her dementia she sometimes wanders outside and then forgets where she is and what has happened. Short term use of Lilli helped to alert us a few times when we needed to take action."

## Linked to an app

"You are given a link to an app which is very good at giving information on activities around the house, time spent in certain rooms for instance, which could indicate more exercise is needed. It also indicated

that my mother was not sleeping well at night. So, it was useful to identify the need for carers to help her to bed a little earlier and then to see she spent time in the bedroom. I could see when she was up in the morning and track activity."

## Handy system

"It helped us identify a need for further in-person care for my mother," added Fikri. "It's not perfect, the equipment could be a bit more dementia proof as occasionally my mother would unplug something that looked unfamiliar and stop the technology working properly. I know the Bromley team has taken my comments on board which is helpful. But overall, it's a handy system."

## Intelligent Lilli - how it works

Monitoring technology Intelligent Lilli helps people live independently, maintaining privacy and dignity using non-intrusive sensors that discreetly monitor activity without the need for cameras or wearable devices. Relatives can get updates at any time from anywhere using an app enabling timely decisions if patterns change.

Here's how it works: Bromley installs technology sensors to track movement in the home. The sensors are linked to an app using wi-fi so that relatives can see certain functions have been carried out each day – boiling the kettle, opening the fridge, visiting the bathroom and so on. Clear indicators of someone safely getting on with their life. If there is an interruption to normal routines, this can be followed up to make sure the person is happy and well. This innovative technology provides a dignified solution that gives people peace of mind with the continuous monitoring, reducing hospital admissions and helping to identify when and where extra support may be required.

**More information:** [www.bromley.gov.uk/adultcare](http://www.bromley.gov.uk/adultcare)



# Who Cares?

Foster Carers are superheroes who change lives  
- there's always room for a few more

**“W**e're passionate about the children,” says Kim from Bromley's Fostering Team. “Foster carers are heroes – caring individuals and families who look after children in care as if they were their own. The financial rewards are good, but that's simply not the reason to foster,” says Kim. “We are looking for people who care deeply about children and want to give something back.”

Tracey, also from the team, adds, “We've made some changes to the way Fostering operates in Bromley and the support that's available. We're learning from the new therapeutic fostering for young people with more complex needs, that establishing family hubs is a great way for foster carers to pass on information and learn from each other.”

“There are some carers who have been doing this for years. We

want to use the new hubs to share some of their brilliance with other foster carers. It's very powerful.” “We train together with carers too; we're part of one large family really,” Kim adds.

“There's a real developmental path in Fostering,” says Kim. “We're always looking for more special people to care for children who need stability in their lives. There's many different ways to get involved from longer term fostering to respite care. We're very excited to have launched Weekenders too – where people spend time with children a couple of times a month, benefitting the child and giving full time carers some space. It's a great way to experience fostering before making a longer-term commitment. We look forward to talking to anyone interested in starting their fostering journey with Bromley.”

## Foster for Bromley

### Types of Fostering

- Long term fostering
- Short term fostering
- Respite
- Parent and Child
- Short Breaks for children with disabilities
- Weekenders
- Specialist fostering for experienced carers

### What do Foster Carers say?

**“Brilliant and fulfilling”**

**“An adventure”**

**“Enriching”**

**“Absolutely fabulous”**

Bromley Council welcomes applications from people from all walks of life. Why not call for a chat to find out more?  
020 8461 7701 or email [fostering@bromley.gov.uk](mailto:fostering@bromley.gov.uk)



**“Our foster carers do an incredible job supporting children and young people and I know they are proud to change lives for the better. I urge anyone interested in joining them to get in touch with the fostering team for a chat.”**

Councillor Kate Lymer, Deputy Leader and Executive Councillor for Children and Families



# Bromley Homes for Bromley People

One of the ways Bromley is addressing the shortage of affordable housing is to build on suitable brownfield sites across the Borough

**T**he Bromley Homes for Bromley People programme provides quality new affordable housing across the Borough to let to residents on the housing register. Let by the Council's housing service, these developments provide homes for Bromley households who need them and help to reduce council costs from providing more expensive nightly-paid temporary accommodation.

## Upcoming developments:

### Approval for unused car park site

— *Beckenham*

A development of 35 new one, two and three bed affordable homes has been approved for the site west of the Spa Leisure

Centre in Beckenham, on land previously occupied by a car park that was no longer being used. The site will also feature flexible ground-floor workspace, cycle parking, and a children's play area.



### Emerging Plans for Poverest Road

— *Orpington*

Plans are emerging to deliver 44 affordable homes on Poverest Road. A mix of two-to-four-bedroom homes are planned on the site, along

with accessible homes. Wider plans will see enhancements at Tillingbourne Green and Poverest Park Playgrounds as well as car and cycle parking, tree retention and the creation of public green spaces. Residents were invited to view and comment on the proposals ahead of a planning application being submitted.



### New Housing to come in St Paul's Cray

The redevelopment of the Bellegrove site in St Paul's Cray will consist of 68 one, two and three-bed homes,

outdoor children's play space, car and cycle parking, and landscaping improvements as well as wheelchair-accessible and supported living units. Planning permission has now been granted with works set to start in the new year with completion anticipated by late 2027.

### Apartments in Bromley North

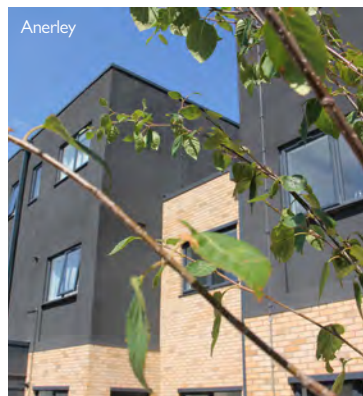
Work has begun on this 75-unit affordable housing development on a car park next to Bromley North Train Station. Plans include a new square which offers a chance for rest and play and opens up connections between the town centre and the local neighbourhood. The local landscape has been respected in the plans which will enhance the setting of the Grade II Bromley North station building.



### York Rise

– Orpington

Thirty-five terraced maisonettes and modern apartments with balcony, terrace or garden, soon due for completion. The development also includes cycle parking spaces and four wheelchair-accessible homes each with a Blue Badge parking space.



### Bromley Homes for Bromley People already delivered:



**George Groves Road**

– Anerley



**Richmal Court and Crompton Court**

– West Wickham



**Kevin Fenton Mews**

– Burnt Ash Lane



**Chris Whitty Place**

– Chislehurst

### Bromley's Housing Priorities

This programme is one of the key priorities of Bromley Council's housing strategy which commits to provide 1,000 new homes on council sites by 2030. To achieve this, the Council is progressing development opportunities on a range of brownfield sites across the Borough.

#### The four key priorities to address housing needs in Bromley are:



More homes  
– increasing the number of homes in Bromley



Better quality, more affordable homes



Preventing and tackling homelessness



Supporting vulnerable people

[www.bromley.gov.uk/housing](http://www.bromley.gov.uk/housing)

### What's in a name?

**Richmal Court and Crompton Court** pay tribute to Richmal Crompton, author of the 'Just William' books she began writing while a teacher in Bromley, where she lived for 26 years.

**Chris Whitty Place** commemorates the work of a familiar face on our TV screens during the Covid-19 pandemic. As Chief Medical Officer for England it was his responsibility to offer independent health advice.

**Kevin Fenton Mews** was named after Professor Kevin Fenton CBE, a senior public health expert and infectious disease epidemiologist, marking his services to health improvement, prevention, and tackling inequalities.



**“We continue to deliver quality, affordable homes for our residents which will make a real difference to people's lives. Residents of our completed schemes are delighted with their new homes. Bromley's programme of transforming underused brownfield sites into homes is having a really positive impact and collectively means more Bromley Homes for Bromley People while also reducing our housing costs to the benefit of Council taxpayers.”**

Councillor Yvonne Bear, Executive Councillor for Renewal, Recreation and Housing



# Funding Reduction Expected as Service Demand Rises

Bromley, in common with most Outer London authorities, has received significantly lower funding proportionally than Central London for decades. Now Bromley looks set to lose out in the central government review of local authority funding.

A significant amount of Council funding comes from government grants, which is why the level of this grant funding and how it is split between local authorities is important to maintain the services that residents rely on, be that waste collection, library provision, adult or children's social care, or maintaining our parks and roads.

The Council has long campaigned for successive governments to review the funding model for local authorities, both to provide sufficient funding to meet unrelenting cost pressures on statutory services and to correct

disparities in the current model, which negatively impact Bromley residents.

## Government funding review

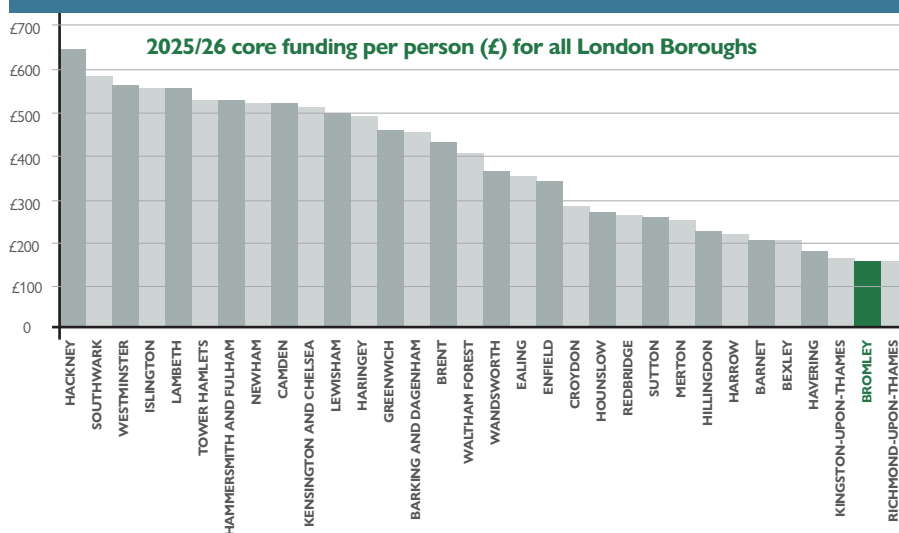
The ongoing fair funding review looks set to make the situation worse for Bromley, with further details expected after this

publication goes to press. Due to a combination of grant changes this year and further changes for the upcoming financial year, the review is estimated to result in a loss of funding of around £9m per year for Bromley, phased over the next few years, equivalent to £27 per resident.

£80.4m per year – the extra funding Bromley would receive with just the average Central Government settlement for London boroughs at the time of the last budget. Enough to pay for well over the entire Environment and Community Services departmental budget for the year.

## EXTRA £80.4 MILLION PER YEAR

The amount Bromley would get if it received the average Central Government settlement for London.



## Facing a budget gap of £56m

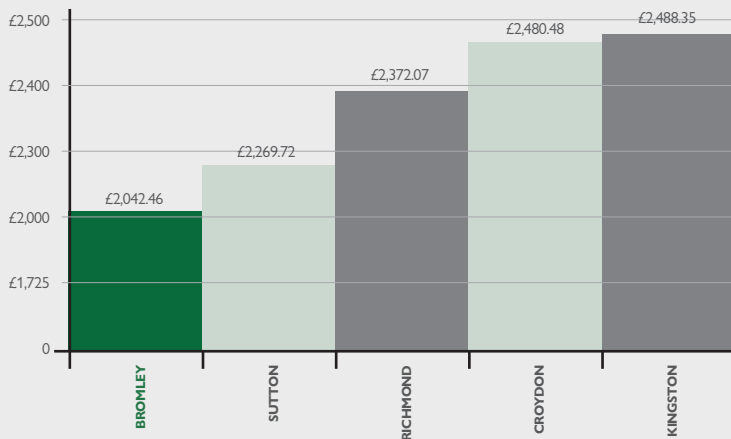
Bromley has continued at every opportunity to press the Government to reconsider, particularly as the Council faces an estimated budget gap of £56m in 2026/27, with final changes due to be reported in January 2026. Unrelenting pressure on social care services for children and adults, special educational needs transport, as well as demand for housing from homeless Bromley families continue to drive this budget gap.

## Low-cost, high-quality services

Already a low-cost Council,

Bromley delivers efficient services for less than many other boroughs, yet every option is still being explored to further reduce costs and generate income to try and close the budget gap. More than £18m in savings across 84 projects are set to be realised this year under the Council's transformation programme, which seeks alternative ways to provide services at lower costs whilst maintaining the high standards that residents deserve. These include 'invest-to-save' initiatives and using new technology as appropriate.

2025/26 Band D Council Tax rates compared to outer South London Boroughs



Careful financial management and low-cost services has kept Bromley's council tax rate low compared to other boroughs. Bromley's longstanding campaign for fairer Government funding is continuing, along with the call for additional funding to meet unprecedented cost rises across local government.

## Tackling costs head on

The Council continues to look for ways to improve services while minimising costs.

Outstanding Children's services deliver high-quality care for children who need it. By investing in our own children's home and creating an in-house therapeutic fostering service for children with more complex needs, the Council is enhancing care while reducing reliance on expensive placements and specialist providers.

In Adult Care too, new ways of working, including modern technology, provide a better experience for residents while making savings. The Council also works to bring social workers in-house and grow its team of foster carers mitigating more expensive agency costs.

Investment in libraries provides a modern environment while saving on ongoing maintenance costs as does the Council's recent move to Churchill Court.



**"Most Bromley residents will be seriously annoyed when they discover the direction of travel being contemplated by the Government's 'fair' funding review and quite rightly so too. Instead of helping to correct the existing imbalance long suffered by Bromley from successive governments going back to the turn of the millennium, this review seems set to pile even more pain and expense on Bromley taxpayers and directly threaten services that many of our residents depend on. While we will continue to do whatever we can to protect our budget, genuinely fairer Government funding for Bromley is now urgently required to preserve critical local services at current levels."**

Councillor Colin P. Smith, Bromley Council Leader



**PROTECT YOURSELF  
AND YOUR FAMILY WITH**



# Winter Vaccinations

**It's important to get your winter flu and COVID-19 vaccinations if you're eligible. Getting vaccinated every year will offer you protection and reduce your risk of getting severe symptoms.**

It's possible for you to be eligible for the flu vaccine but not eligible for the COVID-19 vaccination, even if you've had it previously. This winter, the COVID-19 vaccination is being offered only to people at the highest risk of serious illness such as older people and those who have a weakened immune system because of a health condition or treatment.

## You are eligible for a free flu vaccine if you:

- are aged 65 or over
- are under 65 and at risk
- are pregnant
- children 2-3 years



## You are eligible for a free Covid-19 vaccine if you:

- are aged 75 or over
- are under 75 and immunosuppressed



## Where to get your vaccine

**Book your appointment:**

- Flu vaccination – at [www.nhs.uk/bookflu](http://www.nhs.uk/bookflu) or on the NHS App.
- COVID-19 vaccination – at [www.nhs.uk/bookcovid](http://www.nhs.uk/bookcovid) or on the NHS App.
- Find your nearest vaccination service here: [www.selondonics.org/Bromley-vaccines](http://www.selondonics.org/Bromley-vaccines).





# Make Healthy Decisions

Fake news? How to tell if online health information is reliable

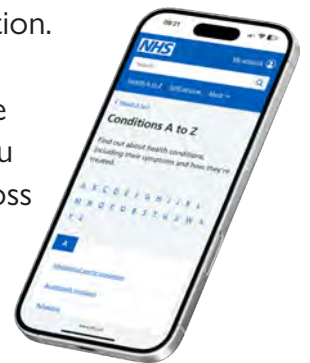
In today's digital world, misinformation spreads fast. While easy access to information can be empowering, it also brings risks.

False or misleading health claims can cause confusion and even harm. So, how can you tell if the health information you find online is trustworthy?

## Build critical habits

Don't make medical decisions based on the first link you see online, or on advice from AI chatbots. While they can sound convincing, they can provide inaccurate or outdated health information.

Always compare what you find across several trusted sources.



## Start by asking yourself a few questions:

- Do you feel unsure about the information? Pause before you share it onwards.
- Has it been altered? Images and videos can be edited or AI generated. Sensational tones might be trying to manipulate your emotions.
- Who's behind it? Is whoever published this information trustworthy on the topic? Reliable health content should come from recognised organisations or qualified health professionals. Web pages displaying the PIF TICK (from the Patient Information Forum) mark high-quality health content. On YouTube, videos from UK health authorities like the NHS have a blue information panel underneath, providing context about the reliability of the source.
- Why was it published? Is the content trying to sell you a product or does it promise a quick fix? Be cautious. Good health information should be balanced, showing both benefits and potential risks.
- Can someone help you check it? If you're unsure about the information, ask someone you trust.
- Is it current? Health advice can change over time. Look for a publication date and check if the information is regularly reviewed.
- Does it cite evidence? Trustworthy sources link to official guidelines or accredited research and institutions. They don't just give opinions.

## Where to start

The best place to start is the NHS Health A-Z which offers clear, evidence-based information on conditions, treatments, and healthy living. [www.nhs.uk/health-a-to-z/](http://www.nhs.uk/health-a-to-z/)

You can also visit Bromley Council's health and wellbeing page for reliable information on local health services: [www.bromley.gov.uk/health](http://www.bromley.gov.uk/health)

If in doubt, speak to a healthcare professional. By staying alert and asking the right questions, you can protect yourself and your loved ones and make informed choices for better health.



# Spotlight on Apprenticeships

A growing choice of apprenticeships provides great opportunities to learn while you earn.

**G**eorgia exudes a quiet confidence that merely hints at the knowledge and expertise beneath her calm exterior. She is a fully qualified social worker and has no regrets about going to university, but it is her subsequent apprenticeships that really introduced her to the world of work and propelled her towards her career dreams, she says. “I knew I wanted to work with young people,” says Georgia. “But it proved tricky – I had the knowledge but lacked experience.

## Great way to learn

“I applied for an apprenticeship with Bromley Council’s Youth Service. The process was challenging, nonetheless for being during the pandemic

when interviews had to be completed online! I was delighted to be accepted and started one day a week at lectures, and four days in the office learning to manage a small caseload. It’s a great way to learn, grow and be supported. Next, I was encouraged to take a social work qualification, so I linked up with an organisation called Frontline and again was lucky to get onto the course. Words can’t explain how grateful I am for Bromley Council taking a chance on me and for the encouragement I received to do my master’s in social work.

“My advice to anyone considering an apprenticeship is to have a go. It’s not an easy option, you must work hard, but it is very rewarding to be able to balance theory with application.”

Apprenticeship really registered with Joe

**J**oe is a Registration Officer for Bromley Council and is now trained to perform marriages, civil partnerships and citizenship ceremonies. Challenging, but he wouldn’t change a thing. Joe was accepted for an apprenticeship around seven years ago. “I was treated like an adult right from the start, more so than at school. Everyone was so friendly and supportive,” says Joe.

## Skills that build confidence

“I chose to study for a level 2 business administration qualification, one day a week at Bromley College with a full-time job in

the office for the other four days. I learn better when I’m shown how to do something and can apply this to my role. At college, I could see how the course was applicable to real situations. I loved every minute of my apprenticeship; it taught me so many skills that built my confidence. I’ve been doing this for six years and now it’s like second nature!

“Every situation is different,” says Joe, “but I do believe that for those who’d prefer not to go to university or are concerned about the cost, an apprenticeship is a great alternative ‘half-way house’. You can continue studying whilst getting great hands-on experience at the same time.”



## Work, train and get paid

Find out more about apprenticeships at Bromley Council and nationally [www.bromley.gov.uk/apprenticeships-training](http://www.bromley.gov.uk/apprenticeships-training)

# Slimming World

feel  
real  
good



**Live in Bromley or registered with a Bromley GP?**

You could be eligible for a **FREE 12-Week** referral to help you achieve and maintain a healthy weight!

To find out more, you can visit the Bromley Council website:

[www.bromley.gov.uk/HealthyWeight](http://www.bromley.gov.uk/HealthyWeight)

scan the QR code below,

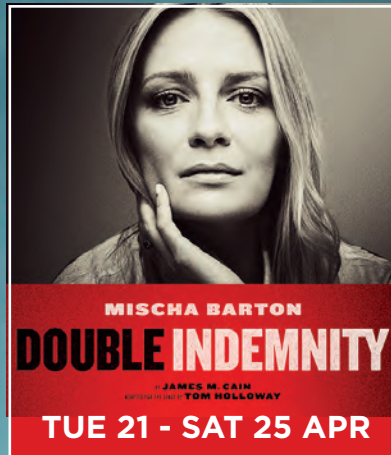
or call Slimming World on 01773 483253



*real food, real support, real results*



# BIG SHOWS. BIG STARS. BIG NIGHTS OUT!



**CHURCHILL THEATRE**  
BROMLEY

BOOK ONLINE [churchilltheatre.co.uk](http://churchilltheatre.co.uk)