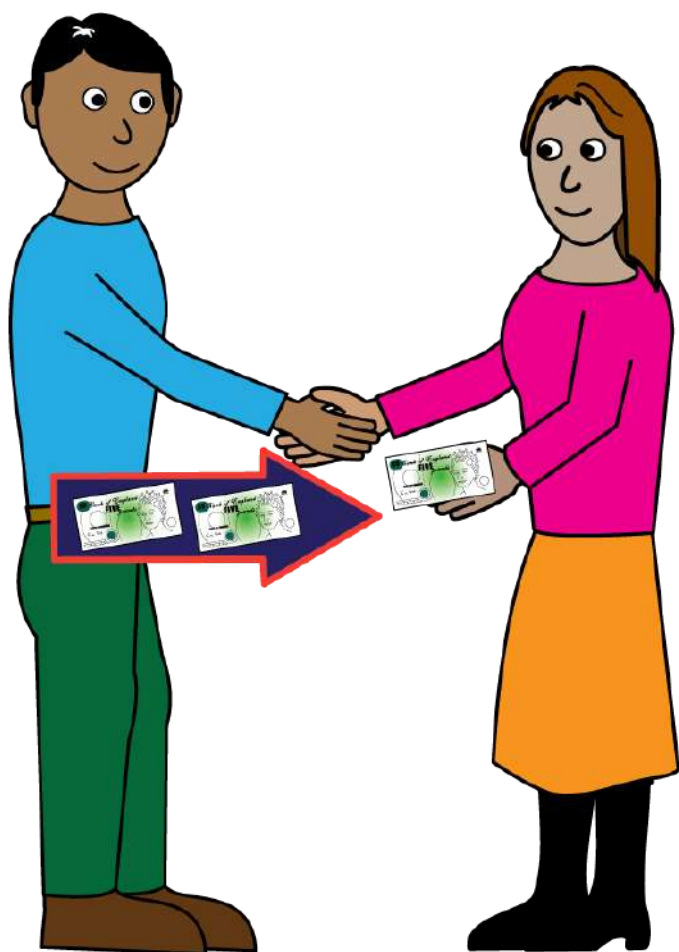
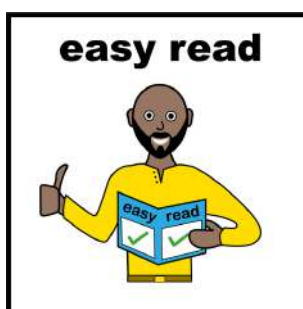


What are direct payments?



hello

This booklet tells you about direct payments, what they can be used for and how to find out if you can get them. You might need some help with it.



What's in this document?

- What are direct payments? **3**
- What can you use a direct payment for? **4**
- How do I get a direct payment? **6**
- What do direct payments involve? **8**
- Write your questions **10**

What are direct payments?



Direct payments are money paid from Bromley Council to you if you get help from adult social care.



You can use the money to arrange your own support.



+



You can have a direct payment and a service given to you by the Council.



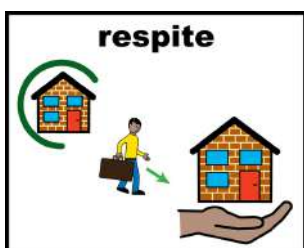
Direct payments do not affect any benefits or pensions that you may get.

What can you use a direct payment for?

You can use direct payments to pay for:



- care and support in your home



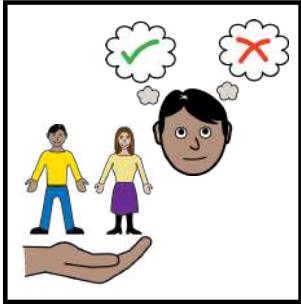
- short breaks and respite



- getting out and about



- support for carers



- employing a personal assistant



- equipment which helps you live independently

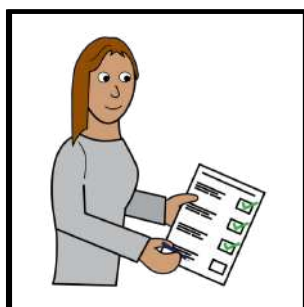
How do I get a direct payment?



If you get help from adult social care ask your care manager.



If you do not have a care manager you will need to contact the Council to see if you can get support from us.



Someone will see if you are able to receive support.



If you can get support you can be given a direct payment.



You can have the direct payment on an Allpay Prepaid Card.

- This is like a bank payment card.
- The direct payment is paid onto the card.



You manage this money and use it to buy your support.



It is not a credit card – you cannot get into debt.

What do direct payments involve?

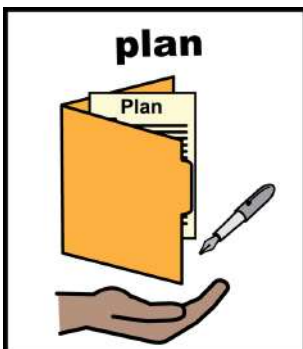


Most people can manage a direct payment with the right support and information.



You will need to complete a support plan

- Your care manager can help you with this.



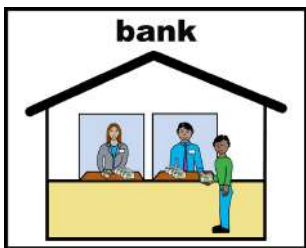
The plan shows how you will use your direct payment to meet your care and support needs.



If you have to pay for your care, this will pay for the first part of the care.



Bromley Council will contribute the balance of the personal budget.



If you choose to have all of your personal budget as a direct payment your contribution will need to be paid into the direct payment account.

- Without this you will not have enough money to pay for the support you need.

Write your questions here

Write your questions here

Contact us

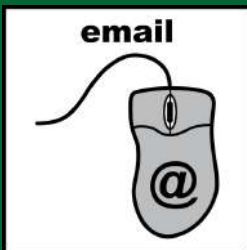
If you have any questions, please contact us:



www.bromley.gov.uk/directpayments



020 8461 7777



adult.early.intervention@bromley.gov.uk



Adult Early Intervention Service,
London Borough of Bromley
Civic Centre, Stockwell Close, Bromley
BR1 3UH

